

IMPORTANT

*Report in part or whole
cannot be quoted or
reproduced*

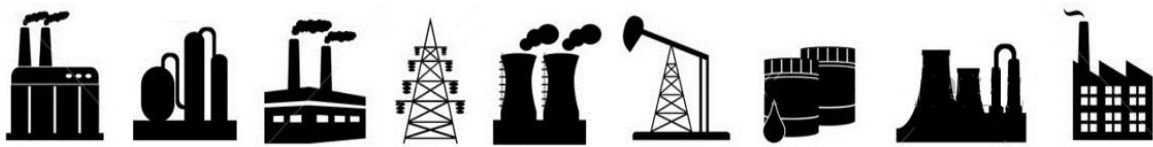
RESTRICTED

For official use only

OCTOBER 2022



**MONTHLY SURVEY OF INDUSTRIAL
PRODUCTION & EMPLOYMENT IN THE PUNJAB**



BUREAU OF STATISTICS

Planning & Development Board

Government of the Punjab

www.bos.gop.pk

PREFACE

Bureau of statistics has been issuing this Monthly Survey of Industrial Production and Employment Report since October 1972. This report provides important statistics in respect of industrial production & employment, employment cost and other aspects of manufacturing activities e.g. consumption of raw material, export of industrial products, import of raw material and productivity of labour etc. These statistics are pre-requisite for sound economic planning as well as for measuring the performance/growth of the industrial sector (GDP estimates regarding industrial sector).

This report contains statistics regarding 46 important industries, manufacturing about almost selected items, contributing 72% of the total value added of large scale manufacturing sector in the province. This report covers more than 2000 industrial units from all over the Punjab.

This report gives information regarding General Index as compared to base period 2005-06, and comprehensive analytical note over the current status of the industrial growth at different sectors. Tables of production & employment give comparisons with the previous month and the same month of the previous year as well as comparisons among financial periods. Performance analysis of 13 major items pertaining to detailed tables & graphical explanation is given in this report.

All possible efforts have been made to incorporate the latest available data in this report. It is hoped that this report will be useful to the policy makers, planners, researchers and other users of industrial/economic data in public as well as private sector.

Suggestions for further improvements will be welcomed.

(SAJID RASUL)
Director General
Bureau of Statistics,
Government of the Punjab

CONTENTS

Sr.#	Description	Page #
i	Explanatory Note	I – IV
ii	Table of General Index of Industrial Production	1
iii	Analytical Note: Industrial Production and Employment October 2022	2 - 3

TABLES

1	Production Volume of Selected Items Pertaining to Large-Scale Manufacturing Sector, October 2022 VS September 2022	4 - 5
2	Production Volume of Selected Items Pertaining to Large-Scale Manufacturing Sector, October 2022 VS October 2021	6 - 7
3	Production Volume of Selected Items Pertaining to Large-Scale Manufacturing Sector, 2022-23 (Jul - Oct:) VS 2021-22 (Jul – Oct:)	8 - 9
4	Total Employment Regarding Large-Scale Industries, October 2022, September 2022 and October 2021	10
5	Total Number of Production Workers Regarding Large-Scale Industries, September 2022, October 2022 and October 2021	11
6	Average Monthly Total Employment Regarding Large-Scale Industries, 2022-23 (Jul - Oct:) VS 2021-22 (Jul - Oct:)	12
7	Average Monthly Number of Production Workers Regarding Selected Large Scale Industries, 2022-23 (Jul - Oct:) VS 2021-22 (Jul – Oct:)	13

ANNEXURES

I	Performance of Cotton Textile Industry	14 - 20
II	Performance of Woollen Textile Industry	21 - 23
III	Performance of Vegetable Ghee/Cooking Oil Industry	24 - 28
IV	Performance of Beverages Industry	29 - 30
V	Performance of Sugar Industry	31 - 33
VI	Performance of Cigarettes Industry	34 - 35
VII	Performance of Cement Industry	36 - 40
VIII	Performance of Fertilizer Industry	41 - 46
IX	Performance of Footwear Industry	47 - 48
X	Performance of Leather Tanning Industry	49 - 50
XI	Performance of Paper & Paper Board Industry	51 - 52
XII	Performance of Light Engineering Industry	53 - 59
XIII	Performance of Pharmaceutical Industry	60 - 63

APPENDIX

A	Telephone Numbers	64
---	-------------------	----

List of Tables

Table No.	Title of Table	Page No.
1	General Index of Industrial Production	1
2	Production Volume of Selected Items Pertaining to Large-Scale Manufacturing Sector, October -2022 VS September -2022	4
3	Production Volume of Selected Items Pertaining to Large-Scale Manufacturing Sector, October -2022 VS October 2021	6
4.	Production Volume of Selected Items Pertaining to Large-Scale Manufacturing Sector 2022-23,(July- October) VS 2021-2022 (July- October)	8
5	Total Employment Regarding Selected Large-Scale Industries, September 2022, October 2022 and October 2021.	10
6	Total Number of Production Workers Regarding Selected Large-Scale Industries September 2022, October 2022 and October 2021	11
7.	Average Monthly Total Employment Regarding Selected Large-Scale Industries 2022-23 (July- October) and 2021-22 (July- October)	12
8	Average Monthly Production Workers regarding selected Large-Scale Industries 2022-23 (July- October) and 2021-22 (July- October)	13
9	Production of Man Made/Blended Yarn and Cloth	15
10	Detail of the Purchase, Sale Consumption and Stock of Cotton Bales.	17
11	Production, Purchase, Consumption, Sale and Stock of Cotton Yarn	18
12	Production .Purchase, Sale and Stock of Cotton Cloth	19
13	Employment, Wages/Salaries of Cotton Textile Industry	20
14	Manufacturing Activity of Woollen Industry	23
15	Detail of the Stock Purchase, Consumed and Sale of Edible Oil	26
16	Detail of Production, Sale and Stock of Vegetable Ghee/Cooking Oil	27
17	Employment, Wages/Salaries of Vegetable Ghee/Cooking Oil Industry	28
18	Manufacturing Activity of Beverages Industry	30
19	Manufacturing Activity of Sugar Industry	32
20	Employment, Wages/Salaries of Sugar Industry	33
21	Manufacturing Activity of Cigarettes Industry	35
22	Detail of Production, Consumption and Stock of Clinker	38
23	Detail of Production, Sale and Stock of Cement	39
24	Employment and Wages/Salaries of Cement Industry	40
25	Detail of Production, Sale and Stock of Urea and Amm. Sulphate	43
26	Detail of Production, Sale and Stock of Super Phosphate and Amm.Nitrate	44
27	Detail of Production, Sale and Stock of Nitro Phosphate	45
28	Employment Wages/Salaries of Fertilizer Industry	46
29	Manufacturing Activity of Footwear Industry	48
30	Manufacturing Activity of Leather Tanning Industry	50
31	Manufacturing Activity of Paper and Paper Board Industry	51
32	Manufacturing Activity of Light Engineering Industry	57
33	Total Employment of Light Engineering Industry	58
34	Production Workers of Light Engineering Industry	59
35	Manufacturing Activity of Pharmaceutical Industry	62
36	Employment and Wages/Salaries of Pharmaceutical Industry	63

List of Figures

Fig. No.	Title of Figures	Page No.
1	Quantum Index of Manufacturing Industries	1
2	Production of Cotton Yarn	16
3	Production of Cotton Cloth	16
4	Production of Knitting Wool	21
5	Production of Woollen Yarn	22
6	Production of Woollen and Worsted Cloth	22
7.	Production of Vegetable Ghee	24
8	Production of Cooking Oil	25
9	Production of Vegetable Ghee/Cooking Oil	25
10	Production of Fruit Juices	29
11	Production of Soft Drinks	29
12	Production of Sugar	31
13	Production of Cigarettes	34
14	Production of Clinker	36
15	Production of Cement	37
16	Production of Urea	41
17	Production of Super Phosphate	42
18	Production of Amm. Nitrate	42
19	Production of Nitro Phosphate	42
20	Production of Footwear	47
21	Production of Upper Leather	49
22	Production of Sole Leather	49
23	Production of Paper	51
24	Production of Paper Board	51
25	Production of Re-Rolled Steel	53
26	Production of Bicycles	54
27	Production of Electric Fans	55
28	Production of Electric Motors	56
29	Production of Diesel Engines	56
30	Production of Tablets	60
31	Production of Liquids	61
32	Production of Capsules	61
33	Production of Injections	61

I
EXPLANATORY NOTE

To have current information on production, employment and other aspects of manufacturing activities e.g. consumption of raw material, wages/salaries, export of industrial products, imports of raw material and productivity of labour etc. for economic planning, evaluation of industrial development and taking other policy related decisions, Government of the Punjab had decided in October 1972 to undertake a Monthly Survey on Industrial Production and Employment.

Prior to this Survey, the only data available on Industrial Statistics was the results of Census of Manufacturing Industries (C.M.I) that were available with the time lag of 2-3 years with a question mark on very high rate of non- response. This high rate of non-response affected the consistency of the results. Therefore, these results were of little use for current and future planning except for historical, research and academic interests/purposes. So Monthly Survey of Industrial Production and Employment was considered to be suitable for Economic Planning as well as for measuring the performance/growth of the industrial sector.

Only 15 industries and their 113 factories were selected to cover initially in October 1972. This report now contains statistics regarding 46 important industries, manufacturing about 100 selected items, contributing 72% of the total value added of large scale manufacturing sector in the province based on base year 2005-06 and covers more than 2000 industrial units from all over the Punjab.

Questionnaire

Keeping in view the pre-determined purpose the data on Industrial Inputs (raw material), Outputs (finished products), Sales, exports, Stocks, Employment & Employment Cost etc. are designed on the available information from CMI returns. These Questionnaires have been pre-tested in some of the large units manufacturing the respective items.

Methodology

Basically it is a mail enquiry. The respondents are the factory owners or the factory management (i.e. Accountants, Finance Manager, and Mill Manager etc.) The blank questionnaires of various industries are used to be mailed out to the factories for their use for the supply of the required information every month. About 60% to 70% questionnaires are received through mail. While the remaining non-responding industrial units are visited by the officers/officials of this Bureau during the third week of the following month for collection of requisite information.

Editing

The received questionnaires are statistically examined for the accuracy and consistency by comparing the production and employment levels of the current month with previous month and same month of the last year. The information of the factories which could not be collected during the month due to the absence of the concerned person or due to other reason is estimated on the basis of the last months' average production or the last month information is repeated.

Tabulation

The information collected is tabulated on working sheets prepared for this purpose and also on computer for each industry/factory. Seven tables are prepared every month on production, total employment and production workers as well as comparisons are made with respect to last month, with same month of the last year and among current & previous financial years.

General index / Quantum Index of Manufacturing (QIM)

At present Punjab Bureau of Statistics is computing Index on Industrial Production using 2005-06 as base year. Index series is given in this report by using Laspayer's Index since 2006-07.

This Bureau initially prepared Index Series using 1970-71 as base year. Later on the base year was shifted to 1980-81 & then in October 2011 the base year was sifted to 2005-06. Majority of some new items are included in the new index series due to their relative weight and some items were discarded due to their negligible weights.

Formula of Quantum Index

$$QIM = \frac{\sum_{i=1}^n \frac{q_{im}}{q_{io}} w_i}{\sum_{i=1}^n w_i} \times 100$$

q_{im} = Production of i^{th} item during the current month

q_{io} = Average Production of the same i^{th} item in the base period (2005-06).

w_i = Weight of the i^{th} item in the base year (2005-06).

$\sum w_i$ = total weight of 46 large scale industries in the base period with respect to the total value added of all the industries covered in CMI in the base year (2005-06).

Final Product

Final product is a CIS report that contains QIM series, analytical note on the performance of Industrial Sector in the province, seven tables, and detailed performance report of some important industries as well.

User Agencies

- i. Ministry of Industries & Production, Government of the Pakistan, Islamabad.
- ii. Pakistan Bureau of Statistics, Government of Pakistan, Islamabad.
- iii. Provincial Bureaus of Statistics, Government of Sindh, KPK and Baluchistan.
- iv. Planning & Development Department, Government of the Punjab.
- v. Punjab Economic Research Institute (PERI).
- vi. Department of Commerce & Industry, Government of the Punjab.
- vii. State Bank of Pakistan

IMPORTANT DEFINITIONS

Factory

An entity where manufacturing process is carried out on any day of the preceding thirty days and in any part of which manufacturing process is being carried on with or without the aid of power or through chemical process. It does not include the Mine subject which comes under the operation of Mines Act 1923.

Large Scale Manufacturing Industries

Establishments where ten or more employees are working are classified as large scale industry.

Employment

This item include all full time and part time employees on the payrolls of operating manufacturing establishment during any part of the pay period of the month specified on the questionnaire. It should include all the employees on paid sick leave paid holidays, and paid vacations. Proprietors and partners of unincorporated business may not be included.

Production Workers

The “Production Workers” includes workers (up through the line-supervisor level) engaged in fabricating, processing, assembling, inspecting, receiving, storing, handling, packing, warehousing, shipping (but no delivering), maintenance, repair, product development, auxiliary production for plant’s own use (e.g., power plant). Record keeping and other services closely associated with these production operations at the establishment covered by the report.

Non-Production Workers

The employees those are not involved directly in the manufacturing process are called non-production workers. E.g. Managers, Assistants, Clerks, Drivers, Peons, Malies and Chowkidars etc.

Employment Cost

Wages and salaries of all employees including production and non-production workers is called employment cost.

TABLE 1: GENERAL INDEX OF INDUSTRIAL PRODUCTION
FOR THE PERIOD JULY 2016 – OCTOBER 2022
(2005-06=100)

MONTH/ YEAR	2016 - 17	2017 - 18	2018 - 19	2019 - 20	2020 - 21	2021 - 22	2022 - 23
JUL:	144.9	152.5	156.5	155.5	160.2	171.1	161.6
AUG:	150.8	154.7	154.3	152.8	155.2	171.8	165.9
SEP:	144.4	152.9	158.1	159.3	169.3	171.0	170.9
OCT:	148.9	160.1	168.7	171.7	176.5	177.6	172.2
NOV:	157.6	153.1	160.6	167.8	179.5	185.1	
DEC:	186.9	178.1	168.7	182.2	216.6	213.2	
JAN:	188.4	213.9	210.3	202.2	208.5	220.5	
FEB:	183.2	222.1	198.9	203.5	207.4	225.1	
MAR:	193.3	245.0	251.9	186.9	213.6	217.8	
APR:	171.5	186.5	197.9	140.0	188.4	183.9	
MAY:	158.6	168.2	175.3	140.0	179.3	172.3	
JUN:	150.6	161.9	160.0	146.3	172.3	181.3	
Average*	164.0	176.8	178.1	166.0	184.5	189.8	167.6

* = Geometric Mean

Fig. 1 **Graph of Quantum Index of Manufacturing Industries.**

(2005-06=100)

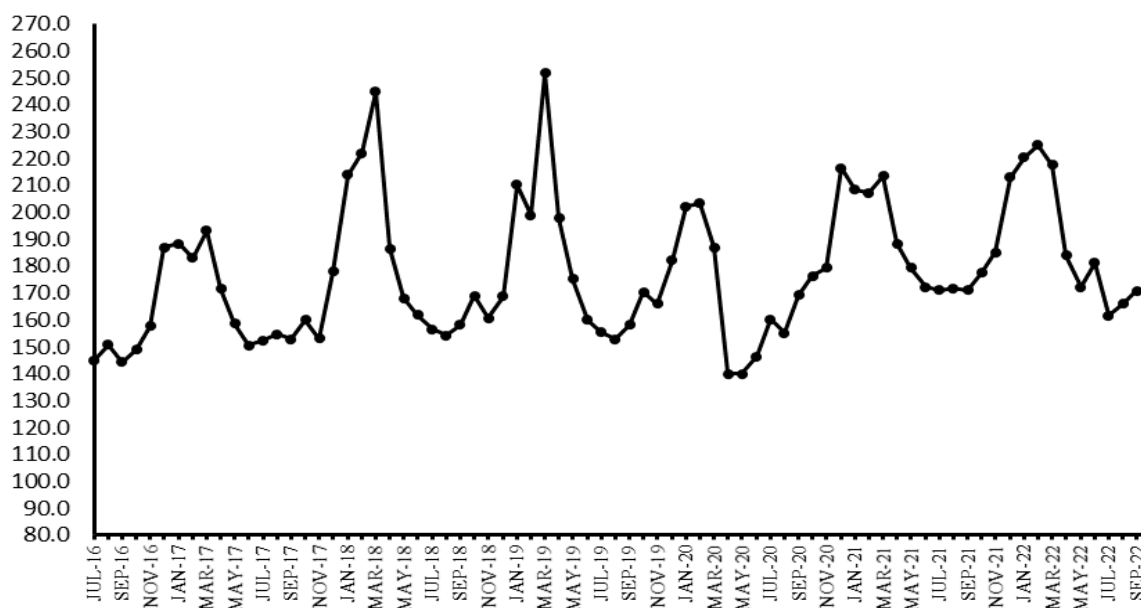


Figure: Graph of QIM for the period of July 2016 to October 2022

ANALYTICAL ANALYSIS

INDUSTRIAL PRODUCTION AND EMPLOYMENT (October 2022)

Coverage

This report covers 2041 industrial units pertaining to large scale industries which contribute about 72 percent of the total value added of Large-Scale Manufacturing sector in the Punjab.

Industrial Production Index

Industrial Production Index for the month of October-2022 stood at 172.2 against 170.9 and 177.6 as compared to September-2022 and October-2021 respectively. Index Series since July-2016 is given in Table-1 on previous page.

Production October 2022 VS September 2022 (Table-2)

Overall production during the month of October-2022 was 0.7 percent higher than September-2022.

The production was lower in case of Dairy Products (7.5%), Soft Drinks & Juices (6.2%), Ply Wood (18.1%), Basic Inorganic Chemicals/Acids (6.2%), Synthetic Fibre (12.2%), Automobiles Cars/Trucks (5.9%), Diesel Engines (8.3%), Electric Fans (8.5%), Air-Conditioners (37.2%) and Refrigerators/Deep Freezers (12.3%).

The production was higher in case of Cigarettes (12.0%), Footwear (7.3%), Pharmaceuticals (9.3%), Fabricated Metal Products/HMC (5.4%) and Motor Cycles (5.6%).

Production October 2022 VS October 2021 (Table-3)

Overall production during October-2022 was 3.1 percent lower than October-2021.

The production was lower in case of Dairy Products (6.0%), Wheat Milling (12.5%), Jute Textiles (16.9%), Ply Wood (85.0%), Paper & Paper Board (11.9%), Basic Inorganic Chemicals/Acids (15.7%), Paints & Varnishes (8.5%), Petroleum Products (16.6%), Cement (9.2%), Tractors (27.4%), Automobile Cars/Trucks (64.9%), Motor Cycles (23.0%), Electric Fans (20.4%), Electric Motors (12.3%), Air-Conditioners (18.4%), Refrigerators/Deep Freezers (24.7%), Safety Razor Blades (16.8%) and Agricultural Implements (13.0%).

The production was higher in case of Vegetable Ghee/Cooking Oil (9.7%), Soft Drinks and Juices (10.6%), Cigarettes (51.0%), Woolen Textiles (13.1%), Upper Leather (9.6%), Footwear (10.3%), Pharmaceuticals ((30.4%), Glass Sheet (150.7%), Fabricated Metal Products/HMC (77.3%), Diesel Engines (50.8%), Bicycles (8.8%) and Electric Meters (94.3%).

Production July-October 2022-23 VS July-October 2021-22 (Table-4)

Overall production during July-October (2022-23) was 3.0 percent lower than July-October (2021-22).

The Production was lower in case of Wheat Milling (14.1%), Cigarettes (29.2%), Ply Wood (53.6%), Petroleum Products (16.6%), Cement (14.9%), Fabricated Metal Products/HMC (33.5%), Tactors (7.9%), Automobiles Cars/Trucks (52.7%), Motor Cycles (23.8%), Electric Fans (16.8%), Electric Motors (18.6%), Air-Conditioners (34.4%), Refrigerators/Deep Freezers (36.2%), Safety Razor Blades (17.1%) and Agricultural Implements (11.7%).

The production was higher in case of Vegetable Ghee/Cooking Oil (9.4%), Starch & its Products (7.9%), Woolen Textiles (8.1%), Jute Textiles (13.8%), Upper Leather (15.8%), Footwear (13.2%), Pharmaceuticals (6.9%), Basic Inorganic Chemicals/Acids (6.4%), Synthetic Fibre (10.8%), Glass Sheets (137.1%), Diesel Engines (67.5%), Bicycles (17.1%) and Electric Meters (56.8%).

Employment October 2022 VS September 2022 and October 2021 (Table-5)

Total employment during October 2022 was 0.8 percent higher and 1.7 percent lower than September 2022 and October 2021 respectively.

Average Employment July-October 2022-23 VS July-October 2021-22 (Table-7)

Average monthly employment during the period of July-October (2022-23) was 0.1 percent lower than the corresponding period of the previous year.

Table 2: Production Volume of Selected Items Pertaining to Large-Scale Manufacturing Sector, October 2022 VS September 2022

Group/Items		No. of Units Covered in Oct: 2022	Weight with 2005-06 base	Unit of Quantity	Production		Index of Production in Oct: 2022 with Sep: 2022
					Oct: 2022	Sep: 2022	
I	Food Drinks & Tobacco	910					
1	Vegetable Ghee/Cooking Oil	44	5.00	M.Tons	95194	90942	104.7
	i) Vegetable Ghee	44		M.Tons	77531	74112	104.6
	ii) Cooking Oil	18		M.Tons	17663	16830	104.9
2	Dairy Products	8	4.13				92.5
	i) Process/UHT Milk		1.62	`000` Litres	45418	40124	113.2
	ii) Milk Powder		0.87	M.Tons	1065	1065	100.0
	iii) Chees		0.01	M.Tons	487	510	95.5
	iv) Butter/ Desi Ghee		0.33	M.Tons	203	358	56.7
	v) Cream		1.04	M.Tons	534	605	88.3
	vi) Yoghurt		0.26	M.Tons	0	0	
3	Wheat Milling	776	1.25	M.Tons	856693	846948	101.2
4	Sugar	44	3.77	M.Tons	0	0	
5	Tea (Blended)	3	0.03	M.Tons	7471	6835	109.3
6	Starch & its Products	2	0.56	M.Tons	35839	35397	101.2
	i) Starch			M.Tons	21533	21557	99.9
	ii) Glucose			M.Tons	14306	13840	103.4
7	Soft Drinks & Juices	30	0.82	`000` Litres	194851	207659	93.8
	i) 7-up Coca Cola etc.	17		`000` Litres	172708	185552	93.1
	ii) Fruit Juices	16		`000` Litres	19991	21348	93.6
	iii) Syrups & Squashes	2		`000` Litres	2152	759	283.5
8	Cigarettes	3	0.59	M. Nos	1596	1425	112.0
II	Textiles	312					
1	Cotton Textiles	285					
	i) Cotton/M. M Blended Yarn	247	15.40	M.Tons	139976	138415	101.1
	ii) Cloth/M. M Blended Cloth	48	10.20	000 Mtrs.	66522	66375	100.2
2	Woolen Textiles	21	0.52	M.Tons	655	658	99.5
	i) Woolen Yarn	14		M.Tons	643	642	100.2
	ii) Knitting Wool	3		M.Tons	0	0	
	iii) Woolen & Worsted Cloth	14		M.Tons	12	16	75.0
	iv) Carpets	5	0.77	000 Mtrs.	0	0	
3	Jute Textiles	6	0.28	M.Tons	4439	4494	98.8
	i) Jute Sacking				2706	2920	92.7
	ii) Jute Hessian				1186	1146	103.5
	iii) Jute Twine				547	428	127.8
III	Leather Rubber & Plastic Products	147					
1	Leather Tanning	106					
	i) Upper Leather	95	0.49	000 Sq. Mtrs.	843	812	103.8
	ii) Sole Leather	11		M.Tons	16	16	100.0
2	Footwear	41	0.90	000 Pairs	2691	2509	107.3
IV	Ply Wood	6	0.44	000 Sq. Feet	515	629	81.9
V	Paper & Paper Board	47	4.19	M.Tons	55755	58682	95.0
1	Paper				18482	18570	99.5
	i) Writing			M.Tons	8872	7251	122.4
	ii) Printing			M.Tons	4086	5830	70.1
	iii) Packing & Others			M.Tons	5524	5489	100.6
2	Paper Board			M.Tons	37273	40112	92.9
VI	Chemical & Petroleum Products	139					
1	Pharmaceuticals	36	1.15				109.3
	i) Tablets	28	0.38	000 Nos.	281325	276502	101.7
	ii) Liquids (Syrups & Drops)	27	0.48	000 Ltrs.	1660	1381	120.2
	iii) Capsules	19	0.08	000 Nos.	45670	45875	99.6
	iv) Injections	12	0.14	000 Nos.	16702	16197	103.1
	v) Ointments	7	0.03	Kgs.	60010	60590	99.0
	vi) Galenicals	6	0.04	000 Ltrs.	5	5	100.0
2	Basic Inorganic Chemicals/Acids	8	1.34		106132	113124	93.8
	i) Caustic Soda	2		M.Tons	22780	20900	109.0
	ii) Hydrochloric Acid	2		M.Tons	34544	43577	79.3
	iii) Chlorine Liquids	2		M.Tons	1667	1566	106.4
	iv) Soda Ash	2		M.Tons	44909	44858	100.1
	v) Sulphuric Acid	5		M.Tons	2232	2223	100.4

Group/Items	No. of Units Covered in Oct: 2022	Weight with 2005-06 base	Unit of Quantity	Production		Index of Production in Oct: 2022 with Sep: 2022
				Oct: 2022	Sep: 2022	
3 Fertilizers	7	7.18	M.Tons	446227	437882	101.9
i) Urea	4		M.Tons	292032	292779	99.7
ii) Amm. Nitrate	1		M.Tons	74824	71617	104.5
iii) Amm. Sulphate	0		M.Tons	0	0	
iv) Super Phosphate	1		M.Tons	3250	419	775.7
v) Nitro Phosphate	1		M.Tons	76121	73067	104.2
4 Paints & Varnishes	12	0.65		9785	9705	100.8
i) Paints		0.01	M.Tons	7010	6963	100.7
			`000` Litres	2746	2713	101.2
ii) Varnishes		1.04	M.Tons	16	16	100.0
		0.26	`000` Litres	13	13	100.0
5 Tyres & Tubes	6	0.12	`000` Nos.	3217	3218	100.0
i) Cycle Tyres				334	333	100.3
ii) Automobile Tyres				430	428	100.5
iii) Cycle Tubes				609	617	98.7
iv) Automobile Tubes				1844	1840	100.2
6 Soap	62	0.07	M.Tons	21754	22287	97.6
i) Toilet Soap	7			3433	3540	97.0
ii) Washing Soap	62			18321	18747	97.7
7 Matches	2	0.00	M. Box * 40 Sticks	527	473	111.4
8 Synthetic Fibre	4	0.95	M.Tons	40452	46074	87.8
9 Petroleum Products	2	0.99	`000` Litres	534759	533628	100.2
i) Petrol (LPG)			`000` Litres	13066	14821	88.2
ii) J.P.			`000` Litres	32812	29895	109.8
iii) White Kerosene			`000` Litres	2232	16689	13.4
iv) H.S. Diesel			`000` Litres	167345	214237	78.1
v) Diesel Fuel			`000` Litres	575	0	
vi) Furnace Fuel			`000` Litres	128474	123071	104.4
vii) Solvent Oil			`000` Litres	0	0	
viii) Lubricating Oil			`000` Litres	0	0	
ix) Bitumen 80/100			`000` Litres	11119	5591	198.9
x) Blown Bitumen Products			`000` Litres	0	0	
xi) Premium M.G.			`000` Litres	179136	129324	138.5
xii) Naphtha			`000` Litres	0	0	
VII Non-Metalic & Mineral	21					
1 Glass Sheets	9	0.19	M.Tons	24227	23121	104.8
2 Cement	12	3.91	M.Tons	2130127	2052463	103.8
VIII Engineering Products	459					
1 Steel Bars/ Angles	41	1.06	M.Tons	26077	25017	104.2
2 Fabricated Metal Products/HMC	1	0.53	M.Tons	39	37	105.4
3 Tractors	4	0.86	Nos.	2339	2400	97.5
4 Automobiles Cars/Trucks	1	1.65	Nos.	703	747	94.1
5 Diesel Engines	15	0.06	Nos.	199	217	91.7
6 Motor Cycles	17	0.13	Nos.	115110	109017	105.6
7 Bicycles	3	0.15	Nos.	12409	12519	99.1
8 Electric Fans	126	0.11	Nos.	160121	174917	91.5
i) Ceiling				98709	102143	96.6
ii) Pedestal				25002	35914	69.6
iii) Others				36410	36860	98.8
9 Electric Transformers	3	0.00	Nos.	3766	3817	98.7
10 Electric Motors	30	0.52	Nos.	1617	1621	99.8
11 Switch Gears	3	0.01	Nos.	934	920	101.5
12 Washing Machines	20	0.00	Nos.	36210	31146	116.3
13 Electric Meters	4	0.19	Nos.	180014	184414	97.6
14 Air-Conditioners	5	0.14	Nos.	5601	8917	62.8
15 Refrigerators/Deep Freezers	5	0.31	Nos.	35522	40485	87.7
16 Safety Razor Blades	1	0.14	Mill. Nos.	84	82	102.4
17 Agricultural Implements	151	0.38	Nos.	1167	1215	96.0
i) Chaff Cutter	54			678	798	85.0
ii) Sugarcane Machines	35			5	4	125.0
iii) Wheat Thrashers	30			0	3	
iv) Others (Misc. Imp.)	43			484	410	118.0
18 Textiles Machinery	29	0.01		44	40	110.0
i) Power Looms	20		Nos.	40	36	111.1
ii) Bobbins	5		000 Nos.	0	0	
iii) Shuttles	6		000 Nos.	4	4	100.0
General Index	2041	72.14		172.2	170.9	100.8

Table 3: Production Volume of Selected Items Pertaining to Large-Scale Manufacturing Sector, October 2022 VS October 2021

Group/Items	No. of Units Covered in Oct: 2022	Weight with 2005-06 base	Unit of Quantity	Production		Index of Production in Oct: 2022 with Oct: 2021
				Oct: 2022	Oct: 2021	
I Food Drinks & Tobacco	910					
1 Vegetable Ghee/Cooking Oil	44	5.00	M.Tons	95194	86781	109.7
i) Vegetable Ghee	44		M.Tons	77531	70951	109.3
ii) Cooking Oil	18		M.Tons	17663	15830	111.6
2 Dairy Products	8	4.13				94.0
i) Process/UHT Milk		1.62	`000` Litres	45418	47326	96.0
ii) Milk Powder		0.87	M.Tons	1065	754	141.2
iii) Chees		0.01	M.Tons	487	227	214.5
iv) Butter/ Desi Ghee		0.33	M.Tons	203	227	89.4
v) Cream		1.04	M.Tons	534	709	75.3
vi) Yoghurt		0.26	M.Tons	0	0	
3 Wheat Milling	776	1.25	M.Tons	856693	979464	87.5
4 Sugar	44	3.77	M.Tons	0	0	
5 Tea (Blended)	3	0.03	M.Tons	7471	7215	103.5
6 Starch & its Products	2	0.56	M.Tons	35839	34179	104.9
i) Starch			M.Tons	21533	20660	104.2
ii) Glucose			M.Tons	14306	13519	105.8
7 Soft Drinks & Juices	30	0.82	`000` Litres	194851	176107	110.6
i) 7-up Coca Cola etc.	17		`000` Litres	172708	157763	109.5
ii) Fruit Juices	16		`000` Litres	19991	17572	113.8
iii) Syrups & Squashes	2		`000` Litres	2152	772	278.8
8 Cigarettes	3	0.59	M. Nos	1596	1057	151.0
II Textiles	312					
1 Cotton Textiles	285					
i) Cotton/M. M Blended Yarn	247	15.40	M.Tons	139976	137090	102.1
ii) Cloth/M. M Blended Cloth	48	10.20	000 Mtrs.	66522	66744	99.7
2 Woolen Textiles	21	0.52	M.Tons	655	579	113.1
i) Woolen Yarn	14		M.Tons	643	561	114.6
ii) Knitting Wool			M.Tons	0	0	
iii) Woolen & Worsted Cloth	14		M.Tons	12	18	66.7
iv) Carpets	5	0.77	000 Mtrs.	0	0	
3 Jute Textiles	6	0.28	M.Tons	4439	5342	83.1
i) Jute Sacking				2706	3162	85.6
ii) Jute Hessian				1186	1273	93.2
iii) Jute Twine				547	907	60.3
III Leather Rubber & Plastic Products	147					
1 Leather Tanning	106					
i) Upper Leather	95	0.49	000 Sq. Mtrs.	843	769	109.6
ii) Sole Leather	11		M.Tons	16	14	114.3
2 Footwear	41	0.90	000 Pairs	2691	2439	110.3
IV Ply Wood	6	0.44	000 Sq. Feet	515	3424	15.0
V Paper & Paper Board	47	4.19	M.Tons	55755	63283	88.1
1 Paper				18482	18930	97.6
i) Writing			M.Tons	8872	7584	117.0
ii) Printing			M.Tons	4086	6279	65.1
iii) Packing & Others			M.Tons	5524	5067	109.0
2 Paper Board			M.Tons	37273	44353	84.0
VI Chemical & Petroleum Products	139					
1 Pharmaceuticals	36	1.15				130.4
i) Tablets	28	0.38	000 Nos.	281325	253686	110.9
ii) Liquids (Syrups & Drops)	27	0.48	000 Ltrs.	1660	1205	137.8
iii) Capsules	19	0.08	000 Nos.	45670	39993	114.2
iv) Injections	12	0.14	000 Nos.	16702	9624	173.5
v) Ointments	7	0.03	Kgs.	60010	55395	108.3
vi) Galenicals	6	0.04	000 Ltrs.	5	4	125.0
2 Basic Inorganic Chemicals/Acids	8	1.34		106132	125839	84.3
i) Caustic Soda	2		M.Tons	22780	25124	90.7
ii) Hydrochloric Acid	2		M.Tons	34544	47606	72.6
iii) Chlorine Liquids	2		M.Tons	1667	1761	94.7
iv) Soda Ash	2		M.Tons	44909	44614	100.7
v) Sulphuric Acid	5		M.Tons	2232	6734	33.1

Group/Items	No. of Units Covered in Oct: 2022	Weight with 2005-06 base	Unit of Quantity	Production		Index of Production in Oct: 2022 with Oct: 2021
				Oct: 2022	Oct: 2021	
3 Fertilizers	7	7.18	M.Tons	446227	445463	100.2
i) Urea	4		M.Tons	292032	283418	103.0
ii) Amm. Nitrate	1		M.Tons	74824	77119	97.0
iii) Amm. Sulphate	0		M.Tons	0	0	
iv) Super Phosphate	1		M.Tons	3250	6067	53.6
v) Nitro Phosphate	1		M.Tons	76121	78859	96.5
4 Paints & Varnishes	12	0.65		9785	10696	91.5
i) Paints		0.01	M.Tons	7010	8101	86.5
			`000` Litres	2746	2563	107.1
ii) Varnishes		1.04	M.Tons	16	11	145.5
		0.26	`000` Litres	13	21	61.9
5 Tyres & Tubes	6	0.12	`000` Nos.	3217	3147	102.2
i) Cycle Tyres				334	314	106.4
ii) Automobile Tyres				430	423	101.7
iii) Cycle Tubes				609	573	106.3
iv) Automobile Tubes				1844	1837	100.4
6 Soap	62	0.07	M.Tons	21754	22340	97.4
i) Toilet Soap	7			3433	3546	96.8
ii) Washing Soap	62			18321	18794	97.5
7 Matches	2	0.00	M. Box * 40 Sticks	527	391	134.8
8 Synthetic Fibre	4	0.95	M.Tons	40452	41038	98.6
9 Petroleum Products	2	0.99	`000` Litres	534759	641212	83.4
i) Petrol (LPG)			`000` Litres	13066	15108	86.5
ii) J.P.			`000` Litres	32812	42317	77.5
iii) White Kerosene			`000` Litres	2232	5901	37.8
iv) H.S. Diesel			`000` Litres	167345	258646	64.7
v) Diesel Fuel			`000` Litres	575	717	80.2
vi) Furnace Fuel			`000` Litres	128474	132205	97.2
vii) Solvent Oil			`000` Litres	0	0	
viii) Lubricating Oil			`000` Litres	0	0	
ix) Bitumen 80/100			`000` Litres	11119	5981	185.9
x) Blown Bitumen Products			`000` Litres	0	0	
xi) Premium M.G.			`000` Litres	179136	180337	99.3
xii) Naphtha			`000` Litres	0	0	
VII Non-Metalic & Mineral	21					
1 Glass Sheets	9	0.19	M.Tons	24227	9662	250.7
2 Cement	12	3.91	M.Tons	2130127	2346177	90.8
VIII Engineering Products	459					
1 Steel Bars/ Angles	41	1.06	M.Tons	26077	25165	103.6
2 Fabricated Metal Products/HMC	1	0.53	M.Tons	39	22	177.3
3 Tractors	4	0.86	Nos.	2339	3220	72.6
4 Automobiles Cars/Trucks	1	1.65	Nos.	703	2000	35.2
5 Diesel Engines	15	0.06	Nos.	199	132	150.8
6 Motor Cycles	17	0.13	Nos.	115110	149563	77.0
7 Bicycles	3	0.15	Nos.	12409	11402	108.8
8 Electric Fans	126	0.11	Nos.	160121	201040	79.6
i) Ceiling				98709	130266	75.8
ii) Pedestal				25002	31160	80.2
iii) Others				36410	39614	91.9
9 Electric Transformers	3	0.00	Nos.	3766	2200	171.2
10 Electric Motors	30	0.52	Nos.	1617	1844	87.7
11 Switch Gears	3	0.01	Nos.	934	818	114.2
12 Washing Machines	20	0.00	Nos.	36210	56647	63.9
13 Electric Meters	4	0.19	Nos.	180014	92664	194.3
14 Air-Conditioners	5	0.14	Nos.	5601	6864	81.6
15 Refrigerators/Deep Freezers	5	0.31	Nos.	35522	47164	75.3
16 Safety Razor Blades	1	0.14	Mill. Nos.	84	101	83.2
17 Agricultural Implements	151	0.38	Nos.	1167	1341	87.0
i) Chaff Cutter	54			678	880	77.0
ii) Sugarcane Machines	35			5	7	71.4
iii) Wheat Thrashers	30			0	1	
iv) Others (Misc. Imp.)	43			484	453	
18 Textiles Machinery	29	0.01		44	44	100.0
i) Power Looms	20		Nos.	40	40	100.0
ii) Bobbins	5		000 Nos.	0	0	
iii) Shuttles	6		000 Nos.	4	4	100.0
General Index	2041	72.14		172.2	177.6	96.9

Table 4: Production Volume of Selected Items Pertaining to Large-Scale Manufacturing Sector, 2022-23 (Jul-Oct:) VS 2021-22 (Jul-Oct:)

Group/Items	No. of Units Covered in Oct: 2022	Weight with 2005-06 base	Unit of Quantity	Production		Index of Production in 2022-23 (Jul-Oct:) with 2021-22 (Jul-Oct:)=100
				2022-23 (Jul-Oct:)	2021-22 (Jul-Oct:)	
I Food Drinks & Tobacco	910					
1 Vegetable Ghee/Cooking Oil	44	5.00	M.Tons	363617	332438	109.4
i) Vegetable Ghee	44		M.Tons	296363	271843	109.0
ii) Cooking Oil	18		M.Tons	67254	60595	111.0
2 Dairy Products	8	4.13				96.4
i) Process/UHT Milk		1.62	`000` Litres	166302	187179	88.8
ii) Milk Powder		0.87	M.Tons	3963	2972	133.3
iii) Chees		0.01	M.Tons	1985	1952	101.7
iv) Butter/ Desi Ghee		0.33	M.Tons	1321	769	171.8
v) Cream		1.04	M.Tons	2233	2883	77.5
vi) Yoghurt		0.26	M.Tons	0	0	
3 Wheat Milling	776	1.25	M.Tons	3234382	3764276	85.9
4 Sugar	44	3.77	M.Tons	0	0	
5 Tea (Blended)	3	0.03	M.Tons	25829	25662	100.7
6 Starch & its Products	2	0.56	M.Tons	143642	133080	107.9
i) Starch			M.Tons	87384	79392	110.1
ii) Glucose			M.Tons	56258	53688	104.8
7 Soft Drinks & Juices	30	0.82	`000` Litres	922142	902912	102.1
i) 7-up Coca Cola etc.	17		`000` Litres	826864	812816	101.7
ii) Fruit Juices	16		`000` Litres	89931	85200	105.6
iii) Syrups & Squashes	2		`000` Litres	5347	4896	109.2
8 Cigarettes	3	0.59	M. Nos	5369	7609	70.6
II Textiles	312					
1 Cotton Textiles	285					
i) Cotton/M. M Blended Yarn	247	15.40	M.Tons	555154	548016	101.3
ii) Cloth/M. M Blended Cloth	48	10.20	000 Mtrs.	266372	261776	101.8
2 Woolen Textiles	21	0.52	M.Tons	2634	2436	108.1
i) Woolen Yarn	14		M.Tons	2581	2332	110.7
ii) Knitting Wool			M.Tons	0	27	
iii) Woolen & Worsted Cloth	14		M.Tons	53	77	68.8
iv) Carpets	5	0.77	000 Mtrs.	0	0	
3 Jute Textiles	6	0.28	M.Tons	17506	15384	113.8
i) Jute Sacking				11453	9239	124.0
ii) Jute Hessian				4357	3870	112.6
iii) Jute Twine				1696	2275	74.5
III Leather Rubber & Plastic Products	147					
1 Leather Tanning	106					
i) Upper Leather	95	0.49	000 Sq. Mtrs.	3329	2875	115.8
ii) Sole Leather	11		M.Tons	64	56	114.3
2 Footwear	41	0.90	000 Pairs	10765	9507	113.2
IV Ply Wood	6	0.44	000 Sq. Feet	2374	5116	46.4
V Paper & Paper Board	47	4.19	M.Tons	228233	239971	95.1
1 Paper				72461	68441	105.9
i) Writing			M.Tons	29227	30970	94.4
ii) Printing			M.Tons	21908	18078	121.2
iii) Packing & Others			M.Tons	21326	19393	110.0
2 Paper Board			M.Tons	155772	171530	90.8
VI Chemical & Petroleum Products	139					
1 Pharmaceuticals	36	1.15				106.9
i) Tablets	28	0.38	000 Nos.	1005324	1077817	93.3
ii) Liquids (Syrups & Drops)	27	0.48	000 Ltrs.	5559	5308	104.7
iii) Capsules	19	0.08	000 Nos.	176679	157406	112.2
iv) Injections	12	0.14	000 Nos.	66243	43258	153.1
v) Ointments	7	0.03	Kgs.	234500	204800	114.5
vi) Galenicals	6	0.04	000 Ltrs.	15	18	83.3
2 Basic Inorganic Chemicals/Acids	8	1.34		457818	430294	106.4
i) Caustic Soda	2		M.Tons	88219	78973	111.7
ii) Hydrochloric Acid	2		M.Tons	175852	142366	123.5
iii) Chlorine Liquids	2		M.Tons	6931	6259	110.7
iv) Soda Ash	2		M.Tons	176845	174003	101.6
v) Sulphuric Acid	5		M.Tons	9971	28693	34.8

Group/Items	No. of Units Covered in Oct: 2022	Weight with 2005-06 base	Unit of Quantity	Production		Index of Production in 2022-23 (Jul-Oct:) with 2021-22 (Jul-Oct:)=100
				2022-23 (Jul-Oct:)	2021-22 (Jul-Oct:)	
3 Fertilizers	7	7.18	M.Tons	1645365	1672353	98.4
i) Urea	4		M.Tons	1060941	1080878	98.2
ii) Amm. Nitrate	1		M.Tons	286557	275891	103.9
iii) Amm. Sulphate	0		M.Tons	0	0	
iv) Super Phosphate	1		M.Tons	5789	15349	37.7
v) Nitro Phosphate	1		M.Tons	292078	300235	97.3
4 Paints & Varnishes	12	0.65		39127	37305	104.9
i) Paints		0.01	M.Tons	28128	26540	106.0
			`000` Litres	10883	10644	102.2
ii) Varnishes		1.04	M.Tons	64	43	148.8
		0.26	`000` Litres	52	78	66.7
5 Tyres & Tubes	6	0.12	`000` Nos.	12871	12511	102.9
i) Cycle Tyres				1335	1226	108.9
ii) Automobile Tyres				1721	1682	102.3
iii) Cycle Tubes				2440	2265	107.7
iv) Automobile Tubes				7375	7338	100.5
6 Soap	62	0.07	M.Tons	87851	89207	98.5
i) Toilet Soap	7			14147	14699	96.2
ii) Washing Soap	62			73704	74508	98.9
7 Matches	2	0.00	M. Box * 40 Sticks	1994	1508	132.2
8 Synthetic Fibre	4	0.95	M.Tons	186458	168288	110.8
9 Petroleum Products	2	0.99	`000` Litres	2033545	2437024	83.4
i) Petrol (LPG)			`000` Litres	56014	61020	91.8
ii) J.P.			`000` Litres	128416	123194	104.2
iii) White Kerosene			`000` Litres	41939	25995	161.3
iv) H.S. Diesel			`000` Litres	734998	1006426	73.0
v) Diesel Fuel			`000` Litres	3957	3161	125.2
vi) Furnace Fuel			`000` Litres	462117	503510	91.8
vii) Solvent Oil			`000` Litres	0	0	
viii) Lubricating Oil			`000` Litres	0	0	
ix) Bitumen 80/100			`000` Litres	26546	26634	99.7
x) Blown Bitumen Products			`000` Litres	0	0	
xi) Premium M.G.			`000` Litres	579558	687084	84.4
xii) Naphtha			`000` Litres	0	0	
VII Non-Metalic & Mineral	21					
1 Glass Sheets	9	0.19	M.Tons	91354	38537	237.1
2 Cement	12	3.91	M.Tons	7075133	8311987	85.1
VIII Engineering Products	459					
1 Steel Bars/ Angles	41	1.06	M.Tons	99928	101789	98.2
2 Fabricated Metal Products/HMC	1	0.53	M.Tons	145	218	66.5
3 Tractors	4	0.86	Nos.	11718	12722	92.1
4 Automobiles Cars/Trucks	1	1.65	Nos.	3617	7640	47.3
5 Diesel Engines	15	0.06	Nos.	846	505	167.5
6 Motor Cycles	17	0.13	Nos.	443975	582691	76.2
7 Bicycles	3	0.15	Nos.	50935	43502	117.1
8 Electric Fans	126	0.11	Nos.	807301	970666	83.2
i) Ceiling				453493	545714	83.1
ii) Pedestal				146784	156637	93.7
iii) Others				207024	268315	77.2
9 Electric Transformers	3	0.00	Nos.	14582	8075	180.6
10 Electric Motors	30	0.52	Nos.	6797	8351	81.4
11 Switch Gears	3	0.01	Nos.	3844	3571	107.6
12 Washing Machines	20	0.00	Nos.	135289	200293	67.5
13 Electric Meters	4	0.19	Nos.	720185	459430	156.8
14 Air-Conditioners	5	0.14	Nos.	56574	86188	65.6
15 Refrigerators/Deep Freezers	5	0.31	Nos.	177408	277856	63.8
16 Safety Razor Blades	1	0.14	Mill. Nos.	335	404	82.9
17 Agricultural Implements	151	0.38	Nos.	4812	5452	88.3
i) Chaff Cutter	54			3063	3575	85.7
ii) Sugarcane Machines	35			18	23	78.3
iii) Wheat Thrashers	30			8	26	30.8
iv) Others (Misc. Imp.)	43			1723	1828	94.3
18 Textiles Machinery	29	0.01		169	170	99.4
i) Power Looms	20		Nos.	153	154	99.4
ii) Bobbins	5		000 Nos.	0	0	
iii) Shuttles	6		000 Nos.	16	16	100.0
General Index*	2041	72.14		167.6	172.9	97.0

* Average Index of four months.

Table 5: Total Employment Regarding Large-Scale Industries, September-2022, October-2022 and October-2021

Groups/Items		No. of Units Covered in Oct: 2022	Sep: 2022	Oct: 2022	Oct: 2021	Index of Employment	
						Oct: 2022 with Sep: 2022	Oct: 2022 with Oct: 2021
I	Food Drinks & Tobacco	910					
1	Vegetable Ghee/Cooking Oil	44	5371	5525	5274	102.9	104.8
2	Dairy Products	8	2015	2022	2670	100.3	75.7
3	Wheat Milling	776	10096	10122	10107	100.3	100.1
4	Sugar	44	18125	19621	27760	108.3	70.7
5	Tea (Blended)	3	1366	1366	1377	100.0	99.2
6	Starch & its Products	2	1840	1836	1881	99.8	97.6
7	Soft Drinks & Juices	30	8203	8184	8074	99.8	101.4
8	Cigarettes	3	643	639	659	99.4	97.0
II	Textiles	313					
1	Cotton Textiles	285	159251	159311	156075	100.0	102.1
2	Woolen Textiles	21	915	921	1124	100.7	81.9
3	Jute Textiles	7	5139	5137	4942	100.0	103.9
III	Leather Rubber & Plastic Products	147					
1	Leather Tanning	106	2215	2235	2383	100.9	93.8
2	Footwear	41	12014	12583	11891	104.7	105.8
IV	Plywood	6	90	86	146	95.6	58.9
V	Paper & Paper Board	47					
1	Paper & Paper Board	47	5090	5105	5026	100.3	101.6
VI	Chemicals & Petroleum Products	139					
1	Pharmaceuticals	36	8060	8072	8108	100.1	99.6
2	Basic Inorganic Chemicals	8	2224	2226	2193	100.1	101.5
3	Fertilizers	7	5541	5545	5558	100.1	99.8
4	Paints & Varnishes	12	2354	2327	2287	98.9	101.7
5	Tyres & Tubes	6	1330	1332	1313	100.2	101.4
6	Soap	62	2805	2866	2870	102.2	99.9
7	Matches	2	491	494	454	100.6	108.8
8	Synthetic Fibre	4	1776	1776	1776	100.0	100.0
9	Petroleum Products	2	980	961	969	98.1	99.2
VII	Non-Metallic & Mineral Products	21					
1	Glass Sheets	9	1148	1148	613	100.0	187.3
2	Cement	12	7426	7484	8115	100.8	92.2
VIII	Engineering Products	458					
1	Steel Bars/ Angles	40	1097	1113	1061	101.5	104.9
2	Fabricated Metal Products/HMC	1	16	16	16	100.0	100.0
3	Tractors	4	500	470	500	94.0	94.0
4	Automobile Cars/Trucks	1	900	900	1150	100.0	78.3
5	Diesel Engines	15	24	24	21	100.0	114.3
6	Motor Cycles	17	3294	3270	3187	99.3	102.6
7	Bicycles	3	686	686	686	100.0	100.0
8	Electric Fans	126	2144	2130	2065	99.3	103.1
9	Electric Transformers	3	2680	2680	2680	100.0	100.0
10	Electric Motors	30	188	184	200	97.9	92.0
11	Electric Meters	4	1200	1200	1200	100.0	100.0
12	Switch Gears	3	12	12	12	100.0	100.0
13	Washing Machines	20	277	274	298	98.9	91.9
15	Air-Conditioners/Refrigerators/Deep Freezer	10	2153	2153	2153	100.0	100.0
16	Safety Razor Blades	1	744	744	745	100.0	99.9
17	Agricultural Implements	151	414	387	409	93.5	94.6
18	Textiles Machinery	29	78	78	78	100.0	100.0
Total		2041	282915	285245	290106	100.8	98.3

Table 6: Total Number of Production Workers Regarding Large-Scale Industries, September-2022, October-2022 and October-2021

Groups/Items		No. of Units Covered in Oct: 2022	Sep: 2022	Oct: 2022	Oct: 2021	Index of Employment	
						Oct: 2022 with Sep: 2022	Oct: 2022 with Oct: 2021
I	Food Drinks & Tobacco	910					
1	Vegetable Ghee/Cooking Oil	44	3362	3254	3279	96.8	99.2
2	Dairy Products	8	1272	1262	1519	99.2	83.1
3	Wheat Milling	776	6097	6115	6187	100.3	98.8
4	Sugar	44	10530	12308	17250	116.9	71.4
5	Tea (Blended)	3	1052	1052	1057	100.0	99.5
6	Starch & its Products	2	1695	1688	1740	99.6	97.0
7	Soft Drinks & Juices	30	4322	4264	4122	98.7	103.4
8	Cigarettes	3	452	448	485	99.1	92.4
II	Textiles	313					
1	Cotton Textiles	285	133635	133665	131460	100.0	101.7
2	Woolen Textiles	21	721	725	853	100.6	85.0
3	Jute Textiles	7	4697	4697	4521	100.0	103.9
III	Leather Rubber & Plastic Products	147					
1	Leather Tanning	106	1605	1665	1694	103.7	98.3
2	Footwear	41	9306	9469	9178	101.8	103.2
IV	Plywood	6	74	70	111	94.6	63.1
V	Paper & Paper Board	47					
1	Paper & Paper Board	47	3625	3633	3602	100.2	100.9
VI	Chemicals & Petroleum Products	139					
1	Pharmaceuticals	36	3324	3327	3356	100.1	99.1
2	Basic Inorganic Chemicals	8	1386	1382	1373	99.7	100.7
3	Fertilizers	7	3738	3730	3628	99.8	102.8
4	Paints & Varnishes	12	1255	1237	947	98.6	130.6
5	Tyres & Tubes	6	1045	1047	1017	100.2	102.9
6	Soap	62	2240	2290	2249	102.2	101.8
7	Matches	2	437	436	392	99.8	111.2
8	Synthetic Fibre	4	1472	1472	1470	100.0	100.1
9	Petroleum Products	2	495	477	461	96.4	103.5
VII	Non-Metalic & Mineral Products	21					
1	Glass Sheets	9	834	833	447	99.9	186.4
2	Cement	12	4700	4513	5567	96.0	81.1
VIII	Engineering Products	458					
1	Steel Bars/ Angles	40	784	819	783	104.5	104.6
2	Fabricated Metal Products/HMC	1	11	11	11	100.0	100.0
3	Tractors	4	366	340	366	92.9	92.9
4	Automobile Cars/Trucks	1	600	600	860	100.0	69.8
5	Diesel Engines	15	16	16	15	100.0	106.7
6	Motor Cycles	17	2460	2450	2275	99.6	107.7
7	Bicycles	3	527	524	527	99.4	99.4
8	Electric Fans	126	1871	1862	1780	99.5	104.6
9	Electric Transformers	3	1980	1980	1980	100.0	100.0
10	Electric Motors	30	150	150	155	100.0	96.8
11	Electric Meters	4	955	955	955	100.0	100.0
12	Switch Gears	3	10	10	10	100.0	100.0
13	Washing Machines	20	205	202	220	98.5	91.8
15	Air-Conditioners/Refrigerators/Deep Freezer	10	1845	1845	1845	100.0	100.0
16	Safety Razor Blades	1	590	590	591	100.0	99.8
17	Agricultural Implements	151	338	331	323	97.9	102.5
18	Textiles Machinery	29	67	69	67	103.0	103.0
Total		2041	216146	217813	220728	100.8	98.7

Table 7: Average Monthly Total Employment Regarding Large-Scale Industries, 2022-23 (Jul-Oct): VS 2021-22 (Jul-Oct):

Groups/Items		No. of Units Covered in Oct: 2022	2022-23 (Jul-Oct:)	2021-22 (Jul-Oct:)	2022-23 (Jul-Oct:) with 2021-22 (Jul-Oct:)
I	Food Drinks & Tobacco	910			
1	Vegetable Ghee/Cooking Oil	44	5402	5199	103.9
2	Dairy Products	8	2003	2659	75.4
3	Wheat Milling	776	10115	10030	100.8
4	Sugar	44	18761	22581	83.1
5	Tea (Blended)	3	1351	1417	95.4
6	Starch & its Products	2	1844	1966	93.8
7	Soft Drinks & Juices	30	8299	8236	100.8
8	Cigarettes	3	638	657	97.1
II	Textiles	313			
1	Cotton Textiles	285	159469	155644	102.5
2	Woolen Textiles	21	916	1201	76.2
3	Jute Textiles	7	5136	4486	114.5
III	Leather Rubber & Plastic Products	147			
1	Leather Tanning	106	2227	2425	91.9
2	Footwear	41	12325	11639	105.9
IV	Plywood	6	88	101	86.9
V	Paper & Paper Board	47			
1	Paper & Paper Board	47	5080	5026	101.1
VI	Chemicals & Petroleum Products	139			
1	Pharmaceuticals	36	8064	8112	99.4
2	Basic Inorganic Chemicals	8	2224	2543	87.4
3	Fertilizers	7	5548	5522	100.5
4	Paints & Varnishes	12	2348	2305	101.9
5	Tyres & Tubes	6	1337	1304	102.5
6	Soap	62	2837	2876	98.6
7	Matches	2	492	460	107.0
8	Synthetic Fibre	4	1776	1776	100.0
9	Petroleum Products	2	971	977	99.4
VII	Non-Metalic & Mineral Products	21			
1	Glass Sheets	9	1147	613	187.2
2	Cement	12	7446	8153	91.3
VIII	Engineering Products	458			
1	Steel Bars/ Angles	40	1087	1085	100.2
2	Fabricated Metal Products/HMC	1	16	16	100.0
3	Tractors	4	493	499	98.7
4	Automobile Cars/Trucks	1	950	1150	82.6
5	Diesel Engines	15	24	21	114.3
6	Motor Cycles	17	3301	3131	105.4
7	Bicycles	3	686	686	100.0
8	Electric Fans	126	2168	2188	99.1
9	Electric Transformers	3	2680	2680	100.0
10	Electric Motors	30	189	210	89.9
11	Electric Meters	4	1200	1200	100.0
12	Switch Gears	3	12	12	100.0
13	Washing Machines	20	278	293	95.1
15	Air-Conditioners/Refrigerators/Dee	10	2153	2153	100.0
16	Safety Razor Blades	1	744	744	100.0
17	Agricultural Implements	151	407	422	96.3
18	Textiles Machinery	29	78	77	102.3
Total		2041	284306	284471	99.9

Table 8: Average Monthly Number of Production Workers Regarding Large-Scale Industries, 2022-23 (Jul-Oct): VS 2021-22 (Jul-Oct):

Groups/Items		No. of Units Covered in Oct: 2022	2022-23 (Jul-Oct:)	2021-22 (Jul-Oct:)	2022-23 (Jul-Oct:) with 2021-22 (Jul-Oct:)
I	Food Drinks & Tobacco	910			
1	Vegetable Ghee/Cooking Oil	44	3341	3205	104.2
2	Dairy Products	8	1264	1506	83.9
3	Wheat Milling	776	6102	6122	99.7
4	Sugar	44	11326	14241	79.5
5	Tea (Blended)	3	1040	1103	94.3
6	Starch & its Products	2	1699	1826	93.0
7	Soft Drinks & Juices	30	4344	4265	101.9
8	Cigarettes	3	429	485	88.5
II	Textiles	313			
1	Cotton Textiles	285	133747	131289	101.9
2	Woolen Textiles	21	723	924	78.3
3	Jute Textiles	7	4698	4143	113.4
III	Leather Rubber & Plastic Products	147			
1	Leather Tanning	106	1626	1726	94.2
2	Footwear	41	9393	8950	105.0
IV	Plywood	6	72	77	93.8
V	Paper & Paper Board	47			
1	Paper & Paper Board	47	3620	3602	100.5
VI	Chemicals & Petroleum Products	139			
1	Pharmaceuticals	36	3321	3298	100.7
2	Basic Inorganic Chemicals	8	1385	1945	71.2
3	Fertilizers	7	3656	3587	101.9
4	Paints & Varnishes	12	1236	958	129.0
5	Tyres & Tubes	6	1048	1011	103.6
6	Soap	62	2264	2259	100.2
7	Matches	2	438	401	109.2
8	Synthetic Fibre	4	1472	1470	100.1
9	Petroleum Products	2	486	462	105.1
VII	Non-Metalic & Mineral Products	21			
1	Glass Sheets	9	831	447	186.0
2	Cement	12	4652	5587	83.3
VIII	Engineering Products	458			
1	Steel Bars/ Angles	40	787	792	99.4
2	Fabricated Metal Products/HMC	1	11	11	100.0
3	Tractors	4	360	363	99.0
4	Automobile Cars/Trucks	1	650	860	75.6
5	Diesel Engines	15	16	15	106.7
6	Motor Cycles	17	2473	2252	109.8
7	Bicycles	3	526	527	99.9
8	Electric Fans	126	1880	1825	103.0
9	Electric Transformers	3	1980	1980	100.0
10	Electric Motors	30	152	164	92.5
11	Electric Meters	4	955	955	100.0
12	Switch Gears	3	10	10	100.0
13	Washing Machines	20	208	210	98.9
15	Air-Conditioners/Refrigerators/Dec	10	1845	1845	100.0
16	Safety Razor Blades	1	590	590	100.0
17	Agricultural Implements	151	336	339	98.9
18	Textiles Machinery	29	69	65	105.8
Total		2041	217054	217691	99.7

PERFORMANCE OF COTTON TEXTILE INDUSTRY

Report for the month of October 2022

Coverage

This report covers Two Hundred & Eighty Five (285) Cotton Textiles Mills, Producing yarn and cloth.

Spindles/Rotors/Looms	Installed	Average Worked	% Utilization
Spindles	8331624	6367512	76.4%
Rotors	55755	37898	68.0%
Looms	8358	6295	75.3%

MANUFACTURING ACTIVITY (OCTOBER 2022)

Production, Consumption and Stock of Cotton Bales

Textile mills purchased 1224446 Bales of Cotton during the month, which is 47.2% higher than September 2022. These mills consumed 912256 of Cotton Bales to manufacture Yarn that is 5.3% higher than the last month. The stock of Cotton Bales at the end of the month was 4052528 Bales.

Production, Consumption and Sale of Cotton Yarn

The production of Cotton Yarn during the month was 86998 thousand kgs, which is 0.6% higher than September 2022. The mills consumed 20963 thousand kgs. Of Cotton Yarn to manufacture Cotton Cloth, during the month, 90334 thousand kgs. Of Cotton Yarn was sold by the textile mills which was 9.7% higher than the September 2022. The Export of Cotton Yarn during the month was 8865 thousand kgs. Which was 38.4% lower than the last month.

Production and Sale of Cotton Cloth

The production of Cotton Cloth during the month was 57442 thousand Metres. Which is 0.2% higher than the last month, 67030 thousand Metres. Of Cotton Cloth was sold, out of which 16356 thousand Metres was exported by the Textile Mills during the month which was 14.5% higher than last month.

Production of Man Made/Blended Yarn and Cloth

The production of Man Made/Blended Yarn was 52978 thousand kgs. which is 2.0% higher than the last month. The production of Man Made/Blended Cloth was 9080 thousand Mtrs. which is 0.2% higher than the last month.

Employment and Wages/Salaries

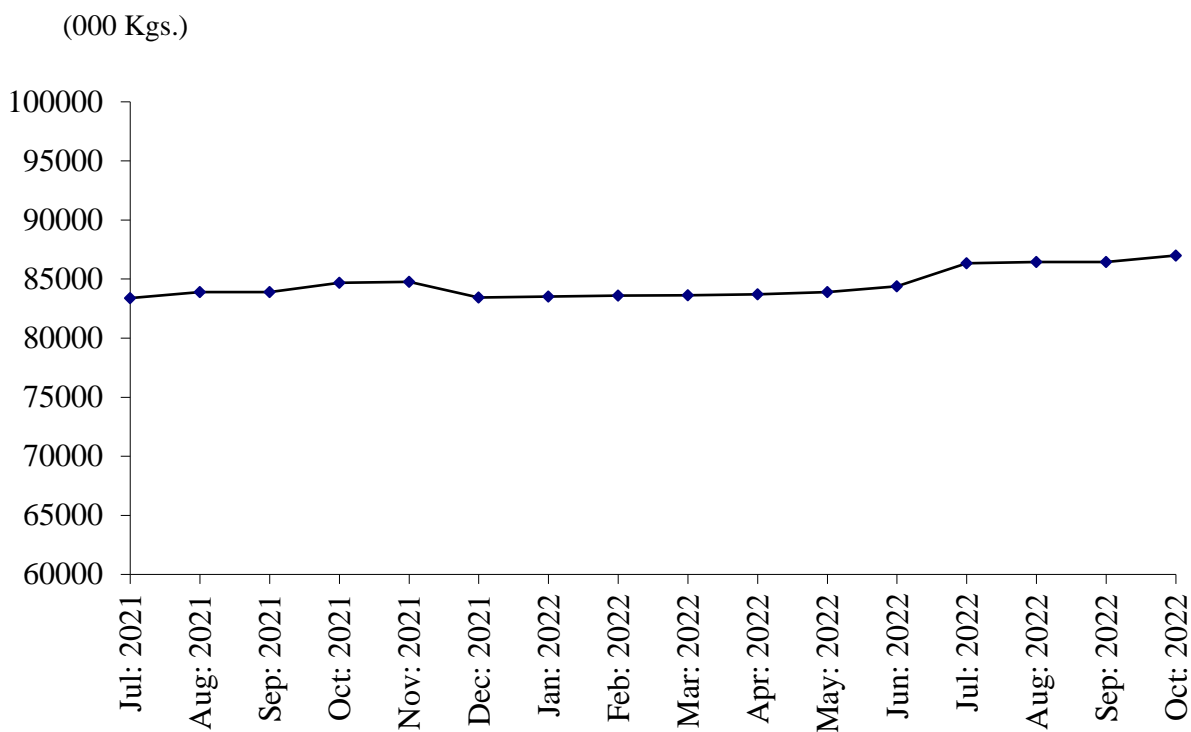
Total employment during the month was 159311 Out of this total employment, 133665 were production workers. Total wages/salaries for the month amounted to 3334.7 Million Rupees.

Production of Man Made/Blended Yarn and Cloth (Since July 2022)

Month/Year	Man Made / Blended Yarn (000 Kgs.)		Man Made / Blended Cloth (000.Mtrs.)	
	2021-22	2022-23	2021-22	2022-23
<u>July- Oct:</u>	<u>212163</u>	<u>208926</u>	<u>37140</u>	<u>37260</u>
July	55304	52124	7807	9635
August	52332	51864	9990	9480
September	52108	51960	9644	9065
October	52419	52978	9699	9080
November	52985		9624	
December	53313		9966	
January	53432		9858	
March	53416		9916	
March	53559		9925	
April	53854		9951	
May	54181		9965	
June	54289		9995	

PRODUCTION OF COTTON YARN

July 2021 to October 2022



PRODUCTION OF COTTON CLOTH

July 2021 to October 2022

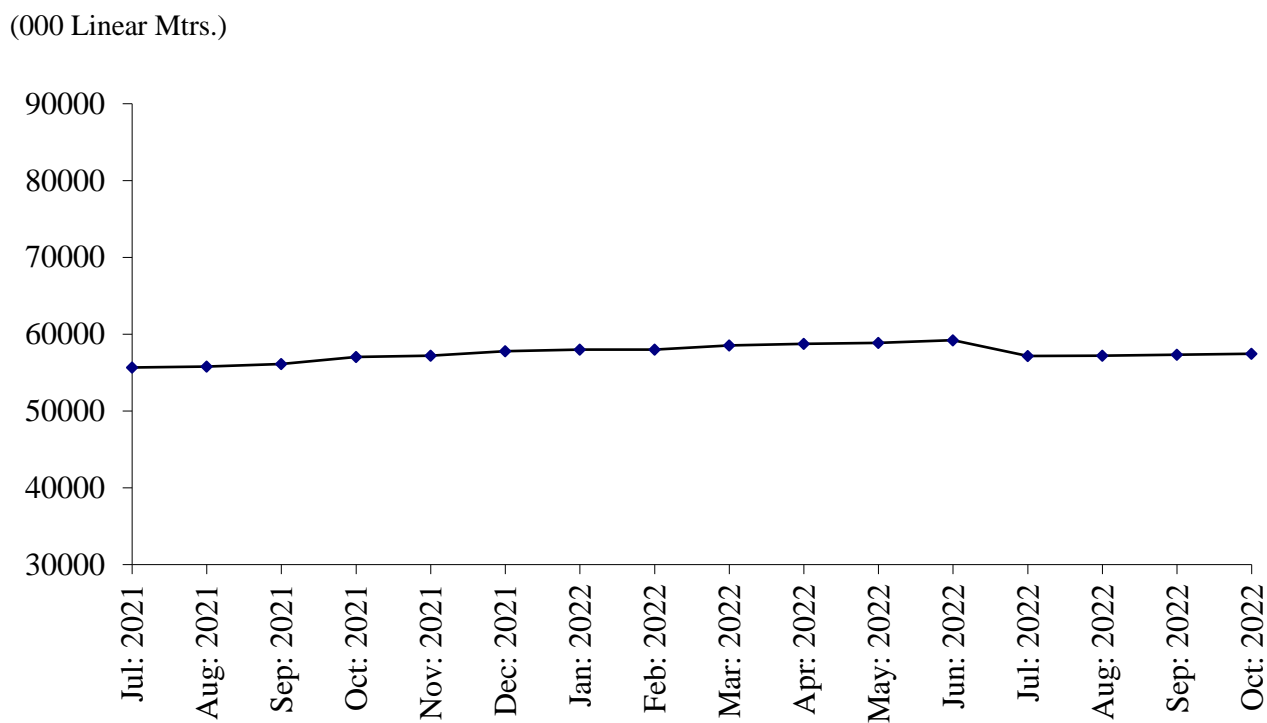


TABLE 10: DETAIL OF THE PURCHASE, SALE, CONSUMPTION AND STOCK OF COTTON BALES.

(one Bale = 170 Kg)

Year (July-June)/ Month	No. Of Reporting Mills	Purchase	Sale	Consumed for Spinning	Stock at the end of Year/Month
2006-07	268	9067493	395172	8691665	1959734
2007-08	268	8457435	451365	7987689	1978115
2008-09	268	7284896	483579	7100353	1679079
2009-10	268	8143340	505951	7889680	1426788
2010-11	274	8801855	484794	8596317	1147532
2011-12	274	8025974	387146	7286551	1499809
2012-13	277	8618084	326690	7863746	1927457
2013-14	277	8301002	434565	7838753	1955141
2014-15	277	8281619	550118	7819131	1867511
2015-16	290	7263140	330272	7085902	1714477
2016-17	290	8271104	587127	7802375	1596079
2017-18	299	8157127	412752	7459759	1880695
2018-19	299	8156763	448409	7552656	2036393
2019-20	299	6953009	399666	6319497	2270239
2020-21	285	8478928	314792	7320669	3113706
2021-22	285	11846884	1594595	9431481	3934514
(Jul: – Oct:)	<u>285</u>	<u>3852039</u>	<u>353501</u>	<u>2767537</u>	<u>3844707</u>
Jul:	285	714986	31523	677441	3119728
Aug:	285	590918	50396	649939	3010311
Sep:	285	943166	146879	733099	3073499
Oct:	285	1602969	124703	707058	3844707
Nov:	285	1388987	29269	838596	4365829
Dec:	285	995600	291992	827294	4242143
Jan:	285	961344	211704	776955	4214828
Feb:	285	904421	217514	676888	4224847
Mar:	285	952248	219210	677308	4280577
Apr:	285	951522	215657	787063	4229379
May	285	1028216	46997	1004486	4206112
June	285	812507	8751	1075354	3934514
<u>2022-23</u>					
(Jul: –Oct:)	<u>285</u>	<u>3709204</u>	<u>38460</u>	<u>3552730</u>	<u>4052528</u>
Jul:	285	820550	5941	887827	3861296
Aug:	285	832204	6141	886409	3800950
Sep:	285	832004	6044	866238	3760672
Oct:	285	1224446	20334	912256	4052528

TABLE 11: PRODUCTION, PURCHASE, CONSUMPTION, SALE AND STOCK OF COTTON YARN

(000 Kgs)

Year (July-June)/ Month	No. of Reporting Mills	Production	Purchase	Consumed	SALE			Stock at the end of Year/ Month
					Total	Within Country	Exported	
2006-07	250	935996	155461	161905	929558	648260	281298	36643
2007-08	263	869531	182463	185558	853110	626939	226171	49969
2008-09	263	744478	138920	150092	736453	562275	174178	46822
2009-10	263	824100	93550	108458	809044	646616	162428	46970
2010-11	263	861278	86884	107441	843590	672067	171523	44101
2011-12	263	807305	83157	76949	824281	661528	162753	33333
2012-13	274	892200	116081	106323	898240	651670	246570	37051
2013-14	274	939965	129796	132378	931890	720629	211561	42544
2014-15	289	982172	132904	139454	974797	750512	224285	43369
2015-16	292	987258	139201	162386	962945	753246	209699	44497
2016-17	290	1063645	143722	153715	1056034	857310	198724	42115
2017-18	247	1082179	191064	179554	1090682	857987	232695	45122
2018-19	247	1075008	186447	178128	1082390	888248	194132	46059
2019-20	247	976627	221511	180109	997528	812952	184576	66560
2020-21	247	998181	342664	169862	1182999	991173	191826	54544
2021-22	247	1006783	252995	215857	1033312	843488	189824	65153
(Jul: – Oct:)	<u>247</u>	<u>335853</u>	<u>89919</u>	<u>53861</u>	<u>371656</u>	<u>303925</u>	<u>67731</u>	<u>54799</u>
Jul:	247	83388	25366	8227	98638	79839	18799	56433
Aug:	247	83907	23576	9282	103674	84065	19609	50960
Sep:	247	83887	20276	17841	84806	70081	14725	52476
Oct:	247	84671	20701	18511	84538	69940	14598	54799
Nov:	247	84772	21556	20848	84334	66359	17975	55945
Dec:	247	83428	20486	22634	83752	66955	16797	53473
Jan:	247	83508	20624	20603	80948	67143	13805	56054
Feb:	247	83590	20632	19968	82999	66624	16375	57309
Mar:	247	83634	20862	19901	81499	67017	14482	60405
Apr:	247	83710	21064	19852	83671	67651	16020	61656
May	247	83899	19937	19444	81609	69841	11768	64439
Jun:	247	84389	17915	18746	82844	67973	14871	65153
<u>2022-23</u>								
(Jul: – Oct:)	<u>247</u>	<u>346228</u>	<u>76779</u>	<u>76720</u>	<u>339222</u>	<u>285949</u>	<u>53273</u>	<u>72218</u>
July	247	86335	17915	18646	83465	68391	15074	67292
Aug:	247	86440	18309	18613	83078	68133	14945	70350
Sep:	247	86455	18194	18498	82345	67956	14389	74156
Oct:	247	86998	22361	20963	90334	81469	8865	72218

TABLE 12: PRODUCTION, PURCHASE, SALE AND STOCK OF COTTON CLOTH.

(000 Mtrs.)

Year (July-June)/ Month	No. Of Reporting Mills	Production	Purchased	SALE			Stock at the end of Year/ Month
				Total	Within Country	Exported	
2006-07	50	421403	93715	508661	267082	241579	56285
2007-08	52	401275	22913	410559	245425	165134	69914
2008-09	52	350406	52966	397698	207800	189898	75588
2009-10	52	369035	62330	438802	258870	179932	68151
2010-11	53	377058	27814	411759	273413	138346	61264
2011-12	53	324906	26410	354262	245679	108583	58318
2012-13	56	337955	39613	384441	227950	156491	51445
2013-14	56	414827	44459	454427	230989	223438	56304
2014-15	57	468206	33332	500905	297034	203871	56937
2015-16	57	522412	18246	542268	325894	216374	55327
2016-17	58	670884	42791	703647	431374	272273	65355
2017-18	39	703513	44908	749157	439486	309671	64619
2018-19	39	697096	38577	751178	456319	294859	49114
2019-20	39	650317	30785	658561	455655	202906	75042
2020-21	38	644439	48331	702494	513618	188876	65318
2021-22	38	690956	48439	728202	512555	215647	76511
(Jul: – Oct:)	<u>38</u>	<u>224636</u>	<u>34760</u>	<u>249574</u>	<u>188336</u>	<u>61238</u>	<u>75140</u>
Jul:	38	55662	12787	63374	51764	11610	70393
Aug:	38	55805	14537	71790	53582	18208	68945
Sep:	38	56124	3019	58336	42284	16052	69752
Oct:	38	57045	4417	56074	40706	15368	75140
Nov:	38	57200	4149	58292	41233	17059	78197
Dec:	38	57790	1234	63512	40608	22904	73709
Jan:	38	57978	1121	58135	37346	20789	74673
Feb:	38	57999	1427	56594	37043	19551	77505
Mar:	38	58539	1344	58767	39368	19399	78621
Apr:	38	58740	1283	60396	39257	21139	78248
May:	38	58855	1327	63388	43979	19409	75042
Jun:	38	59219	1794	59544	45385	14159	76511
<u>2022-23</u>							
(Jul: – Oct:)	<u>38</u>	<u>229112</u>	<u>24396</u>	<u>231778</u>	<u>172831</u>	<u>58947</u>	<u>98241</u>
Jul:	38	57145	1756	54757	40640	14117	80655
Aug:	38	57215	1826	54897	40710	14187	84799
Sep:	38	57310	1928	55094	40807	14287	88943
Oct:	38	57442	18886	67030	50674	16356	98241

TABLE 13: EMPLOYMENT AND WAGES/SALARIES

Year (July-June)/ Month	No. Of Reporting Mills	E M P L O Y M E N T (Nos.)*			WAGES/SALARIES (000 Rs.)		
		Total	Production Workers	Office Staff	Total	Production Workers	Office Staff
2006-07	288	183201	158112	25089	791772	620130	171642
2007-08	288	176643	152036	24607	842722	661182	181540
2008-09	288	162984	139152	23832	802438	629608	172830
2009-10	288	168727	144487	24240	944137	750701	193436
2010-11	295	166718	142756	23962	1149580	893633	255947
2011-12	295	163535	140315	23220	1171743	926744	245002
2012-13	280	169697	144411	25286	1323153	1043134	280586
2013-14	281	172129	144216	27913	1627528	1286234	341294
2014-15	289	170528	143048	27480	1734882	1372957	361925
2015-16	289	164049	135777	28272	1925533	1497525	423209
2016-17	298	165251	133259	31992	2069106	1599857	469249
2017-18	299	161727	133190	28537	2251084	1756455	494629
2018-19	299	157846	131085	26761	2438412	1891246	247166
2019-20	299	151851	126203	25648	2499773	1973563	526210
2020-21	285	154706	129886	24820	2816361	2213454	602907
2021-22	285	157343	132207	25136	3146792	2425150	721642
(Jul: – Oct:)	<u>285</u>	<u>155644</u>	<u>131289</u>	<u>24355</u>	<u>3015337</u>	<u>2344194</u>	<u>671143</u>
Jul:	285	154695	130621	24074	2812038	2219728	592310
Aug:	285	156003	131674	24329	3055240	2374009	681231
Sep:	285	155803	131402	24401	3096924	2394889	702035
Oct:	285	156075	131460	24615	3097145	2388151	708994
Nov:	285	156507	131457	25050	3192910	2448728	744182
Dec:	285	156748	131590	25158	3181397	2451990	729407
Jan:	285	158294	132490	25804	3180335	2441813	738522
Feb	285	158540	132610	24930	3199488	2448892	750596
Mar:	285	158640	133007	24633	3213548	2453189	760359
Apr:	285	158796	133173	25623	3252167	2467214	784953
May	285	158989	133329	24666	3252787	2480662	772125
Jun	285	159028	133672	25356	3227523	2532533	773840
<u>2022-23</u>							
(Jul: – Oct:)	<u>285</u>	<u>159469</u>	<u>133747</u>	<u>25722</u>	<u>3281210</u>	<u>2508303</u>	<u>772907</u>
Jul:	285	159734	133921	24812	3312202	2537499	774703
Aug:	285	159579	133766	25813	3246751	2467880	778871
Sep:	285	159251	133635	25616	3231165	2457355	773810
Oct:	285	159311	133665	25646	3334720	2570476	764244

* = Monthly averages over the four months.

ANNEXURE-II

PERFORMANCE OF WOOLLEN TEXTILE INDUSTRY

Report for the month of October 2022

Coverage

This report covers Twenty Six (21) Woollen Textile Mills of the Punjab.

Production

The Woollen Textile Mills Produced 643 thousand Kgs. of Woollen Yarn, and nil production of Knitting Wool during the month of October 2022. The production of Woollen Yarn was 0.2% higher than the last month and Knitting Wool was 100% lower than the last month respectively.

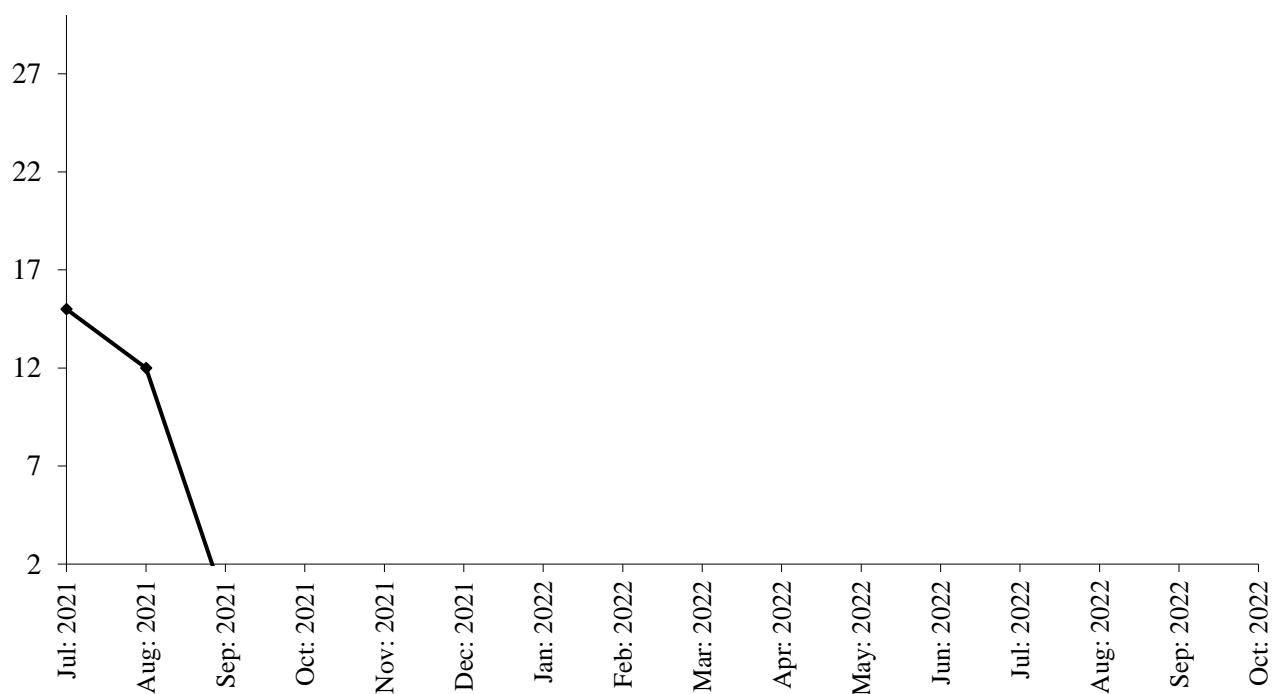
Employment

Total employment in Woollen Textile Mills during the month was 921 which was 0.7% higher the last month. Out of this total employment, 725 were production workers.

PRODUCTION OF KNITTING WOOL

July 2021 to October 2022

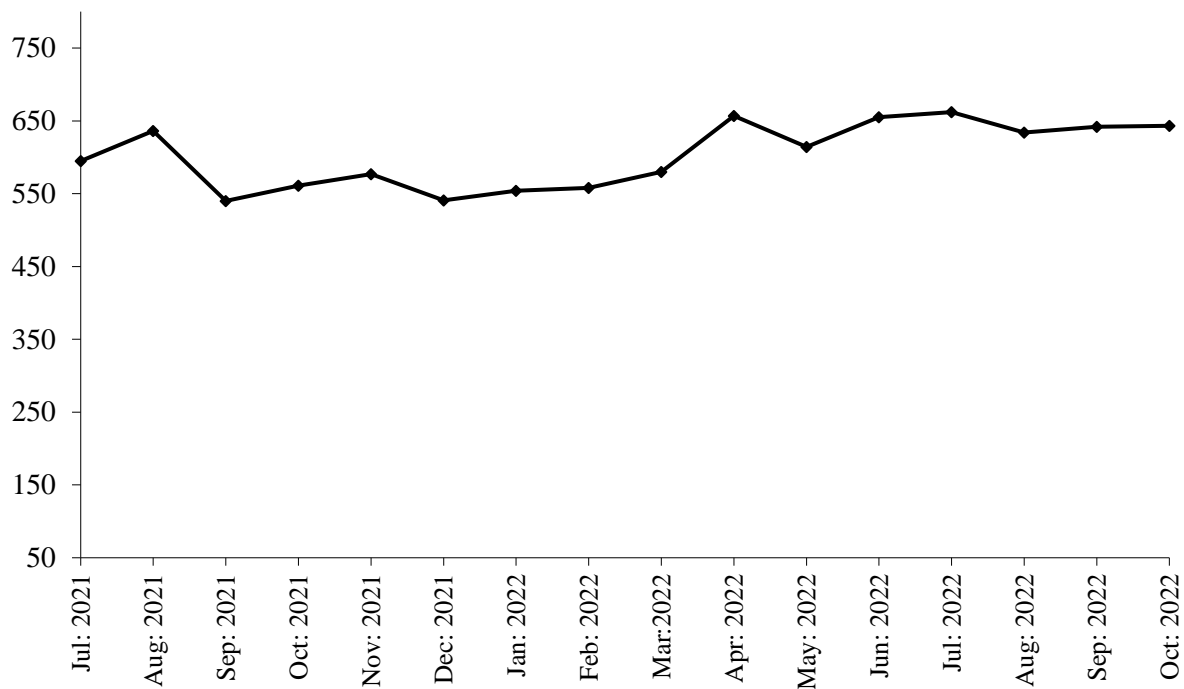
(000 Kg.)



PRODUCTION OF WOOLEN YARN

July 2021 to October 2022

(000 Kg.)



PRODUCTION OF WOOLLEN WORSTED CLOTH

July 2021 to October 2022

(000 Mtrs.)

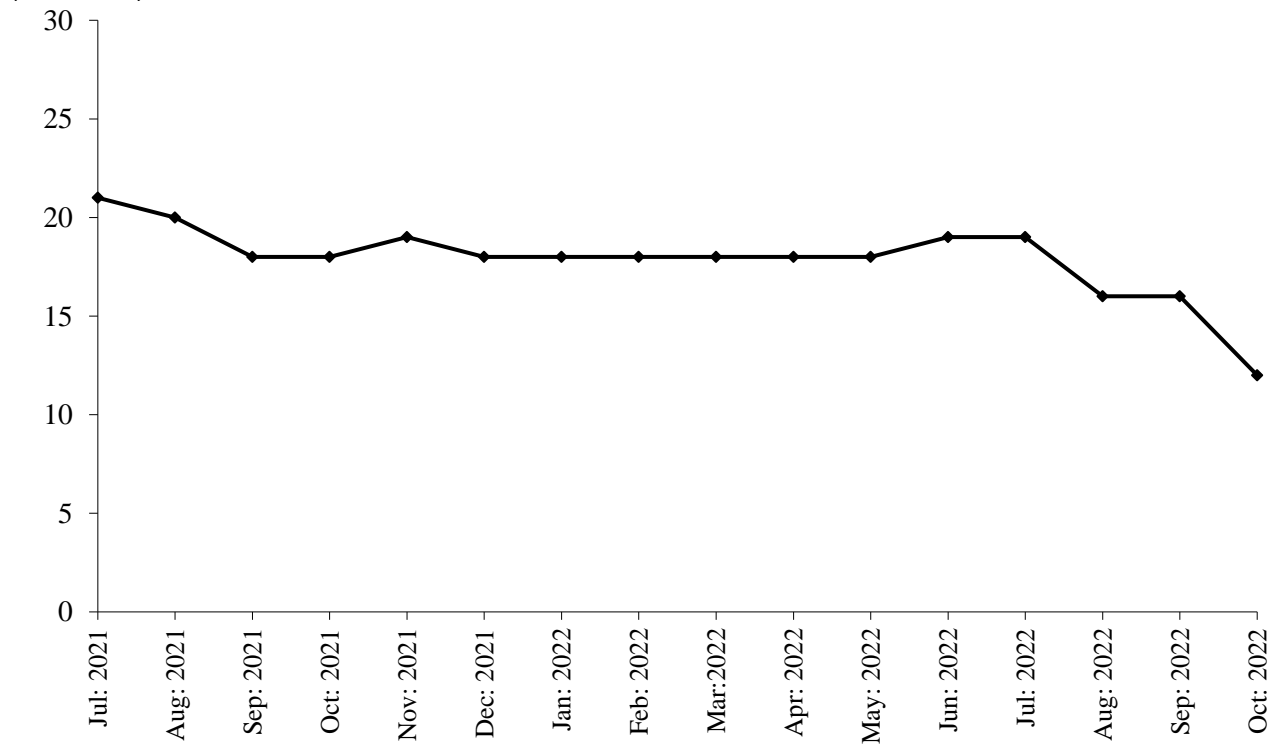


TABLE 13: MANUFACTURING ACTIVITY OF WOOLLEN INDUSTRY.

Year (July-June)/ month	No. Of Reporting Units	PRODUCTION				EMPLOYMENT (Nos.) *	
		Woollen Yarn (M.Tons)	Knitting Wool (M.Tons)	Woollen Worsted Cloth (000 Mtrs.)	Blankets (Nos.)	Total	Production Workers
2006-07	27	1056	3263	612	-	1675	1309
2007-08	27	1194	3306	819	-	1719	1401
2008-09	27	1046	2778	991	-	1787	1476
2009-10	27	1154	2565	825	-	1797	1491
2010-11	27	1037	2351	844	-	1729	1478
2011-12	27	826	2097	808	-	1680	1405
2012-13	27	740	2250	592	-	1661	1413
2013-14	27	864	1633	221	-	1410	1153
2014-15	27	1510	1805	243	-	1301	1037
2015-16	27	1334	1963	246	-	1252	998
2016-17	27	1738	1898	226	-	1318	1056
2017-18	26	2159	1673	160	-	1397	1116
2018-19	26	1918	1488	11	-	1372	1096
2019-20	25	2731	883	79	-	1318	1055
2020-21	21	7988	428	172	-	1303	1017
2021-22	21	7068	27	223	-	1096	832
(Jul: – Oct:)	<u>21</u>	<u>2332</u>	<u>27</u>	<u>77</u>	<u>-</u>	<u>1201</u>	<u>924</u>
Jul:	21	595	15	21	-	1283	999
Aug:	21	636	12	20	-	1273	989
Sep:	21	540	-	18	-	1125	854
Oct:	21	561	-	18	-	1124	853
Nov:	21	577	-	19	-	1125	854
Dec:	21	541	-	18	-	1014	749
Jan:	21	554	-	18	-	1098	800
Feb:	21	558	-	18	-	1101	808
Mar:	21	580	-	18	-	1144	854
Apr:	21	657	-	18	-	1013	751
May	21	614	-	18	-	928	736
Jun:	21	655	-	19	-	928	736
<u>2022-23</u>							
(Jul: – Oct:)	<u>21</u>	<u>2581</u>	<u>78</u>	<u>63</u>	<u>-</u>	<u>916</u>	<u>723</u>
Jul:	21	662	18	19	-	913	726
Aug:	21	634	20	16	-	913	720
Sep:	21	642	40	16	-	915	721
Oct:	21	643	-	12	-	921	725

* = Monthly Average over four months.

ANNEXURE – III

PERFORMANCE OF VEGETABLE GHEE/COOKING OIL INDUSTRY

Report for the month of October 2022

Coverage

This report covers Fifty (50) Vegetable Ghee/Cooking Oil Mills of the Punjab Province.

Purchase, Consumption and Stock of Edible Oil

During the month of October 2022, about 33981 metric tons Local Oil and 35798 metric tons Imported Palm Oil was purchased by the Mills, meanwhile, about 8998 metric tons Other Oil was produced as compared to 8807 metric tons produced in the last month. The Oil intake for production of Vegetable Ghee/Cooking Oil during the month was recorded at 43241 metric tons witnessed 3.1% decrease as compared to the last month. The stock of Oil at the end of the month was closed at 90270 metric tons.

Production, Sale and Stock of Vegetable Ghee/Cooking Oil

Vegetable Ghee and Cooking Oil production in the province during the month registered 4.6% percent increase as compared to last month. The data revealed about 77531 metric tons & 17663 metric tons production of Vegetable Ghee and Cooking Oil during the month respectively. The sale of Vegetable Ghee/Cooking Oil during the month was 95194 metric tons witnessed 4.7% percent increase as compared to the last month. The stock of Vegetable Ghee/Cooking Oil closed at the end of the month at 14754 metric tons.

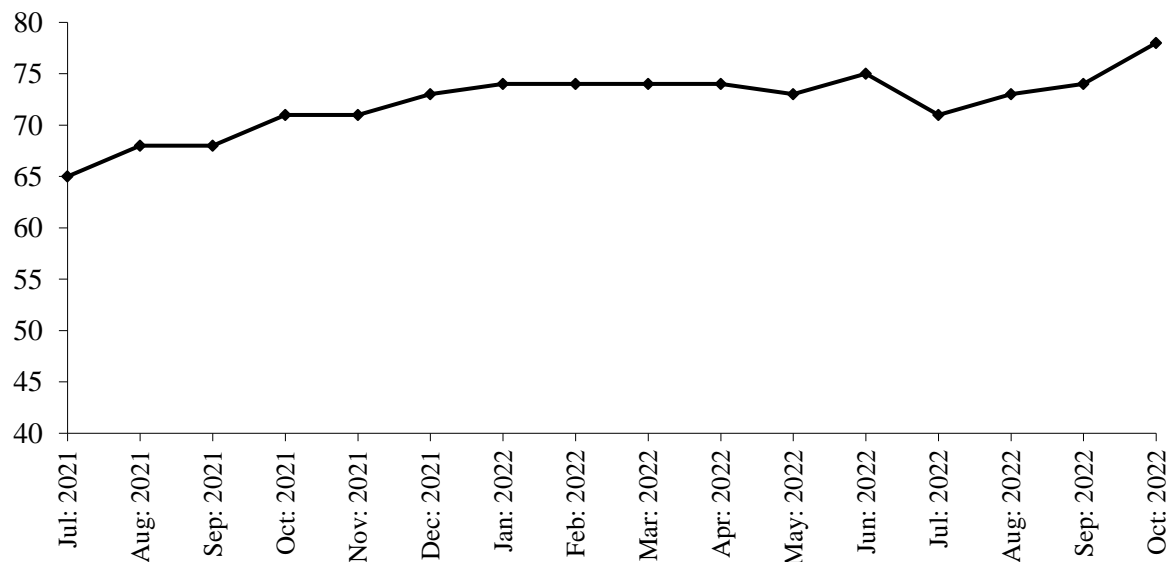
Employment and Wages/Salaries

Total employment recorded in the Mills of Vegetable Ghee/Cooking Oil during the month was 5525, 2.9% higher than the last month. Production workers was 3254 amount of Rs.123 million was paid by the Mills against total wages/salaries for the month of October 2022.

PRODUCTION OF VEGETABLE GHEE

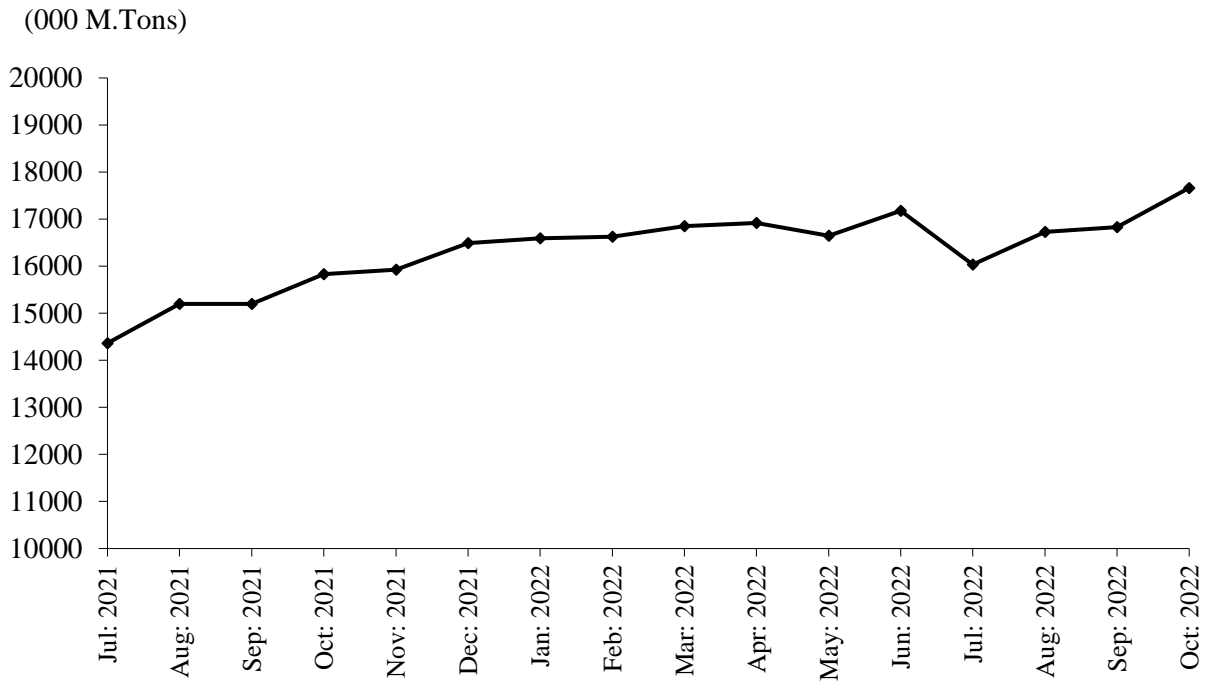
July 2021 to October 2022

(000 M.Tons)



PRODUCTION OF COOKING OIL

July 2021 to October 2022



PRODUCTION OF VEGETABLE GHEE/COOKING OIL

July 2021 to October 2022

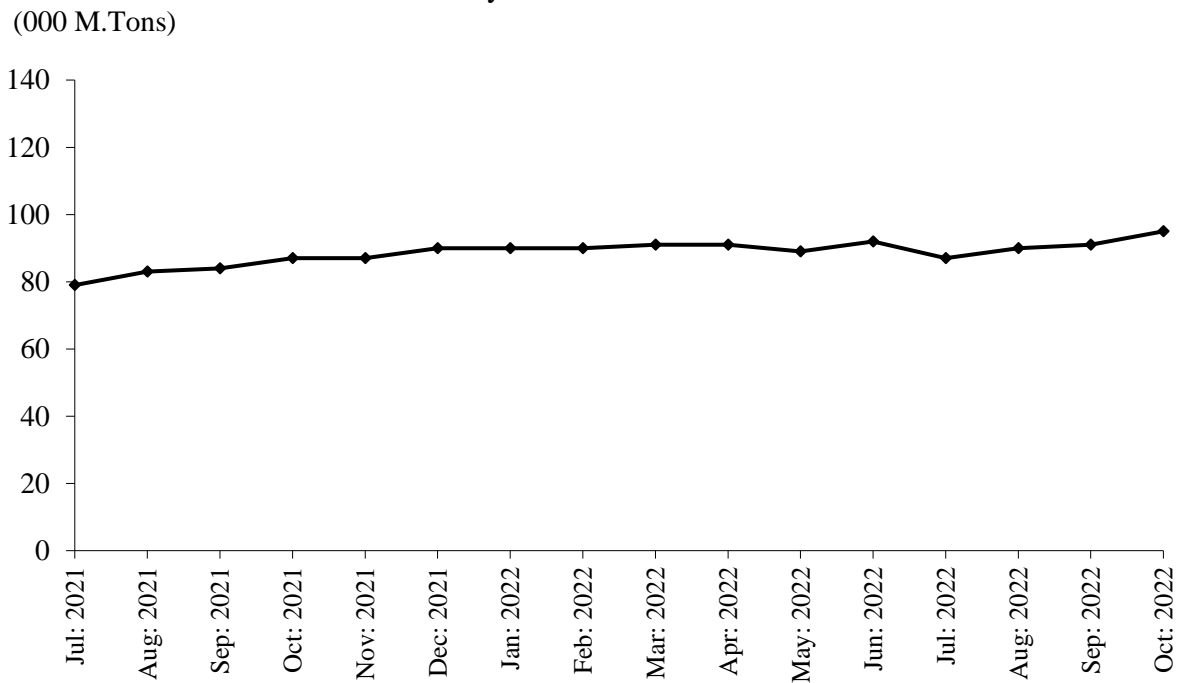


TABLE 15:DETAIL OF THE STOCK, PURCHASED, CONSUMED AND SALE OF EDIBLE OIL.

(M. Tons)

Year (July-June)/ Month	No. Of Repor- ting Mills	LOCALLY PURCHASED		PRODUCED		Impor- ted	Consumed / Sent for Refinery	Sold/ Trans- ferred	Stock at the end of Year/ Month
		Cotton Seed Oil	Other Oil	Cotton Seed Oil	Other Oil				
2006-07	54	8076	50042	-	4068	509698	576065	2730	20158
2007-08	54	-	92673	-	-	432703	530500	-	15034
2008-09	54	-	100857	-	5206	398310	487250	-	32157
2009-10	54	-	104202	-	25852	512468	615680	25090	33909
2010-11	54	327	183884	-	35675	482008	634601	77461	23741
2011-12	54	-	183112	-	34577	423778	607993	37657	19558
2012-13	54	-	229765	-	43652	431163	660016	33454	30668
2013-14	54	-	216660	-	38972	495070	696775	42965	41630
2014-15	53	-	162624	-	49151	585062	753658	50338	34471
2015-16	53	-	185823	-	44073	885878	885882	18622	40602
2016-17	50	-	220571	-	60257	633199	881071	39566	33992
2017-18	51	-	206532	-	83627	849072	1074228	60975	38020
2018-19	51	-	213910	-	92005	836051	1055742	77884	46360
2019-20	52	-	248945	-	60421	715798	921638	102073	47813
2020-21	50	-	374560	-	84020	578628	837241	176122	65658
2021-22	44	-	363623	-	137479	560354	710634	330409	86071
(Jul: – Oct:)	44	=	99375	=	52558	185117	239422	92674	70612
Jul:	44	-	25776	-	10656	44694	63009	24424	59351
Aug:	44	-	23136	-	13397	44376	60793	21168	58299
Sep:	44	-	24527	-	13735	51782	57107	23189	68047
Oct:	44	-	25936	-	14770	44265	58513	23893	70612
Nov:	44	-	28598	-	11030	44050	58333	20075	75882
Dec:	44	-	33827	-	10882	46751	65239	25231	76872
Jan:	44	-	30935	-	9883	46492	65081	28256	70845
Feb:	44	-	32027	-	11904	51043	62442	30363	73014
Mar:	44	-	31088	-	12207	50831	61334	30563	75243
Apr:	44	-	37171	-	11590	48851	55727	32757	84371
May:	44	-	37910	-	9034	45602	52011	34529	90377
Jun:	44	-	32692	-	8391	41617	51645	35361	86071
<u>2022-23</u>									
(Jul: – Oct:)	44	=	122309	=	35193	156185	134403	175085	90270
Jul:	44	-	29239	-	8594	40283	33465	44310	86412
Aug:	44	-	29250	-	8794	39983	32965	42906	88568
Sep:	44	-	29839	-	8807	40121	33750	44628	88957
Oct:	44	-	33981	-	8998	35798	34223	43241	90270

TABLE 16:DETAIL OFPRODUCTION, SALE AND STOCK OF VEGETABLE GHEE/COOKING OIL

(M.Tons)

Year (July-June)/ Month	No. Of Repor- ting Mills	P R O D U C T I O N			Sale	Stock At the end
		Vegetable Ghee	Cooking Oil	Total		
2006-07	54	492595	71696	564291	562729	7932
2007-08	54	438129	55186	493315	494707	6540
2008-09	54	427976	60147	488123	486544	8119
2009-10	54	519765	87487	607252	606825	8546
2010-11	54	524809	96711	621520	622978	7088
2011-12	54	507688	93151	600839	600269	7658
2012-13	54	537111	119437	656548	654031	9059
2013-14	54	533628	20248	159078	156829	10897
2014-15	53	576943	102881	679824	679487	8985
2015-16	53	641889	113708	755597	755526	9057
2016-17	50	644550	110166	754716	755306	8170
2017-18	51	786226	127257	913483	912553	9100
2018-19	51	804497	152352	956849	944020	18074
2019-20	50	880796	193901	1074697	1076905	15866
2020-21	50	860505	198332	1058837	1063974	10729
2021-22	44	859227	193809	1053036	1051023	12742
(Jul: – Oct:)	<u>44</u>	<u>271843</u>	<u>60595</u>	<u>332438</u>	<u>333636</u>	<u>9531</u>
Jul:	44	64561	14365	78926	84457	5198
Aug:	44	68008	15199	83207	78504	9901
Sep:	44	68323	15201	83524	83892	9533
Oct:	44	70951	15830	86781	86783	9531
Nov:	44	71123	15924	87047	87926	8652
Dec:	44	73132	16489	89621	88414	9859
Jan:	44	73825	16589	90414	90912	9361
Feb:	44	73864	16624	90488	90166	9683
Mar:	44	73908	16848	90756	89874	10565
Apr:	44	74110	16918	91028	89536	12057
May	44	72564	16646	89210	88979	12288
Jun:	44	74858	17176	92034	91580	12742
<u>2022-23</u>						
(Jul: – Oct:)	<u>44</u>	<u>296363</u>	<u>67254</u>	<u>363617</u>	<u>361605</u>	<u>14754</u>
Jul:	44	71360	16036	87396	87036	13102
Aug:	44	73360	16725	90085	87767	15420
Sep:	44	74112	16830	90942	91607	14755
Oct:	44	77531	17663	95194	95195	14754

TABLE 17:EMPLOYMENT AND WAGES/SALARIES.

Year (July-June)/ Month	No. Of Reporting Mills	E M P L O Y M E N T (NOS)*			WAGES/SALARIES (000 Rs.)	
		Total	Production Workers	Office Staff	Total	Production Workers
2006-07	54	4308	2551	1757	20138	11068
2007-08	54	3917	2408	1509	19923	11167
2008-09	54	3406	2109	1297	23522	12589
2009-10	54	3449	2176	1273	30532	17526
2010-11	54	3675	2366	1309	34883	20727
2011-12	54	3703	2558	1145	35708	20873
2012-13	54	3798	2625	1173	40008	23277
2013-14	54	4072	2753	1319	50720	28667
2014-15	53	4009	2756	1253	55717	31302
2015-16	53	4122	2901	1221	64521	38408
2016-17	50	3933	2678	1255	62720	35328
2017-18	51	4105	2737	1368	65889	38083
2018-19	52	4111	2787	1324	69521	39564
2019-20	50	5001	3286	1715	77791	41351
2020-21	50	5111	3250	1861	91913	42105
2021-22	44	5295	3287	2008	99277	48422
(Jul: – Oct:)	<u>44</u>	<u>5199</u>	<u>3205</u>	<u>1994</u>	<u>96402</u>	<u>46983</u>
Jul:	44	5121	3109	2012	93456	44544
Aug:	44	5195	3206	1989	96667	49786
Sep:	44	5204	3227	1977	97573	46748
Oct:	44	5274	3279	1995	97913	46855
Nov:	44	5286	3286	1997	98266	46906
Dec:	44	5329	3302	2027	99440	48213
Jan:	44	5339	3324	2015	99696	48380
Feb:	44	5351	3332	2019	99782	49627
Mar:	44	5411	3349	2062	101367	50313
Apr:	44	5425	3355	2070	102153	50425
May:	44	5259	3288	1971	101407	48392
Jun:	44	5348	3387	1961	103603	50878
<u>2022-23</u>						
(Jul: – Oct:)	<u>44</u>	<u>5400</u>	<u>3350</u>	<u>2050</u>	<u>109920</u>	<u>5391</u>
Jul:	44	5351	3392	1959	105579	51995
Aug:	44	5351	3392	1959	105579	51995
Sep:	44	5371	3362	2009	105974	51535
Oct:	44	5525	3254	2271	122547	60109

* =Monthly averages over the four months.

PERFORMANCE OF BEVERAGES INDUSTRY

Report for the month of October 2022

Coverage

The report covers Thirty (30) Beverages factories of the Punjab.

Production

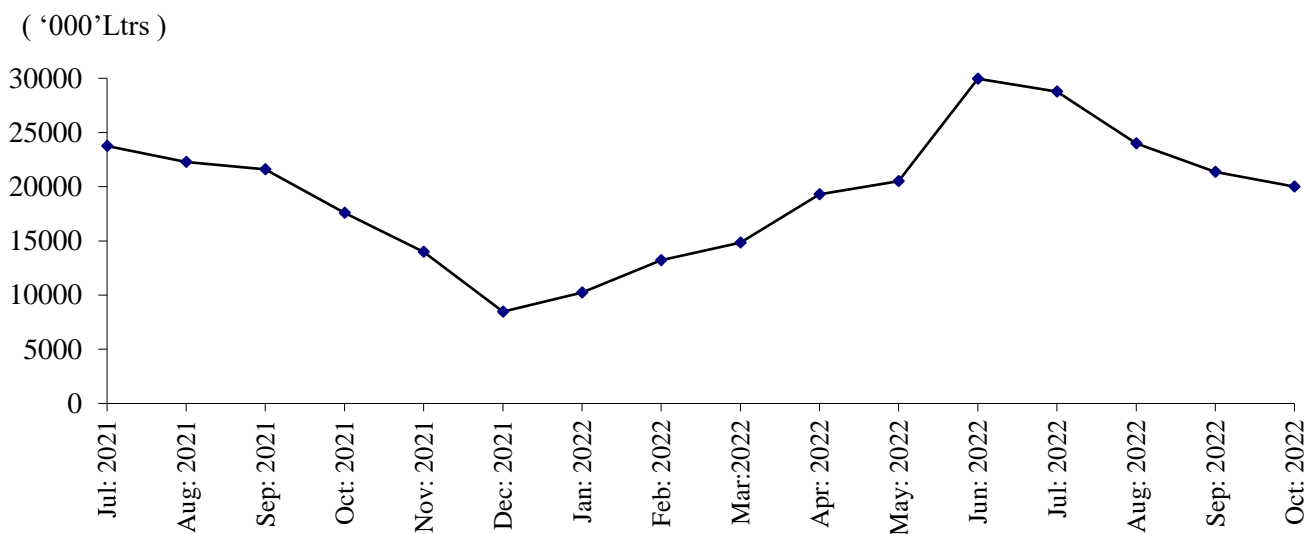
The factories produced 172708 thousand litres of Soft Drinks and 19991 thousand litres of Fruit Juices during October 2022. The production of Soft Drinks and Fruit Juices was 6.9% and 6.4% lower than the last month respectively.

Employment

Total employment in these factories was 8184 which was 0.2% lower than the last month. Out of this total employment 4264 were production workers.

PRODUCTION OF FRUIT JUICES

July 2021 to October 2022



PRODUCTION OF SOFT DRINKS

July 2021 to October 2022

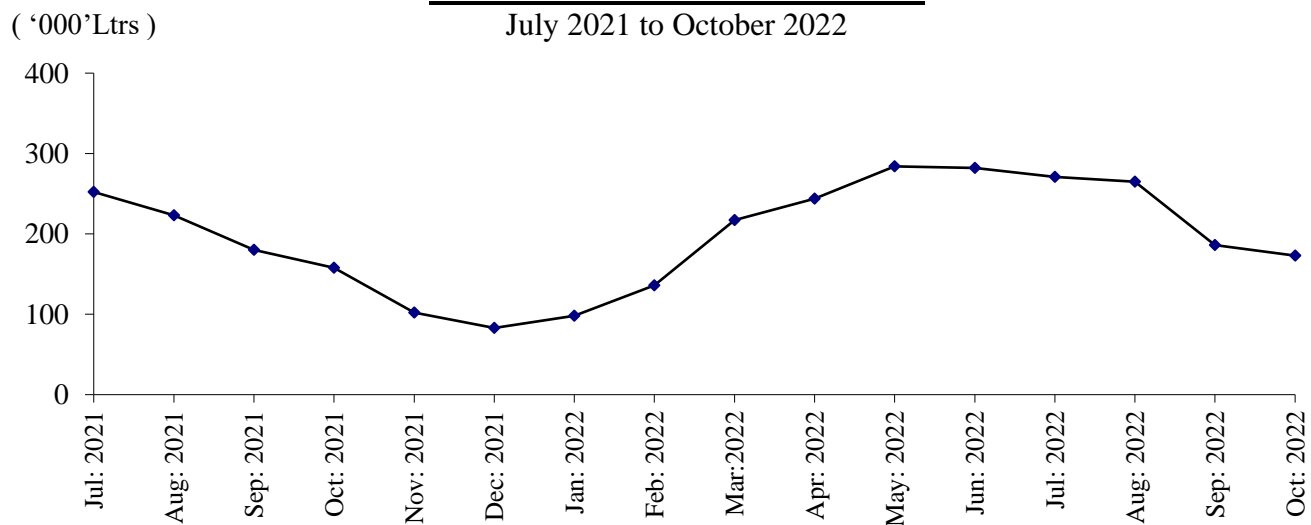


Table 18: MANUFACTURING ACTIVITY OF BEVERAGES INDUSTRY.

Year (July-June)/ Month	No. Of Reporting Units	PRODUCTION (in '000' Ltrs)		EMPLOYMENT (NOS.)*	
		Soft Drinks	Fruit Juices	Total	Production Workers
2006-07	39	1144416	105395	5518	2536
2007-08	37	1367154	98692	6621	2733
2008-09	37	1445760	67932	6492	3037
2009-10	37	1041643	68020	6925	3323
2010-11	37	982963	92115	7577	3027
2011-12	37	1155234	116048	7948	3136
2012-13	37	1349580	120176	8224	3501
2013-14	37	1409663	127571	8125	3659
2014-15	34	1552102	156889	8328	4379
2015-16	30	1722698	139237	15461	8600
2016-17	29	1964432	154877	8549	3997
2017-18	30	1893694	177397	8981	4216
2018-19	31	1830166	219885	8529	4306
2019-20	31	1587814	183550	8173	4099
2020-21	31	1964275	172608	7988	4053
2021-22	30	2258557	215698	8173	4210
(Jul: – Oct:)	<u>30</u>	<u>812816</u>	<u>85200</u>	<u>8236</u>	<u>4265</u>
Jul:	30	252003	23753	8270	4342
Aug:	30	222993	22278	8338	4322
Sep:	30	180057	21597	8263	4274
Oct:	30	157763	17572	8074	4122
Nov:	30	102146	13969	7970	4039
Dec:	30	83127	8469	7756	3839
Jan:	30	97868	10246	7719	3814
Feb:	30	135719	13224	7925	3973
Mar:	30	217189	14829	8402	4414
Apr:	30	244033	19299	8433	4449
May	30	284156	20505	8435	4440
Jun:	30	281503	28957	8493	4488
<u>2022-23</u>					
(Jul: – Oct:)	<u>30</u>	<u>826864</u>	<u>89931</u>	<u>8299</u>	<u>4344</u>
Jul:	30	254026	26462	8425	4413
Aug:	30	214578	22130	8384	4377
Sep:	30	185552	21348	8203	4322
Oct:	30	172708	19991	8184	4264

* =Monthly Average over the four months.

PERFORMANCE OF SUGAR INDUSTRY

Report for the month of October 2022

Coverage

This report covers Forty four (44) Sugar Mills located in the Punjab Province.

Cane Crushing

Total cane crushed for the month of “October” 2022, because of the off crushing season.

Production

Total Sugar Produced during the month of “October” 2022, is nil due to off season.

Sale and Stock of Sugar 2022-23

The sugar sold out from the previous stock as reported during the month of October 2022 was 241631 Metric Tons and the remaining stock of sugar is 825170 Metric Tons.

Employment and Wages / Salaries

Total employment during the month of October 2022 was 19621. Out of this total employment, the number of production workers were 12308. The total wages/salaries during this month is amounted to 632 million rupees.

MONTHLY PRODUCTION OF SUGAR

Season 2021-22 VS 2022-23

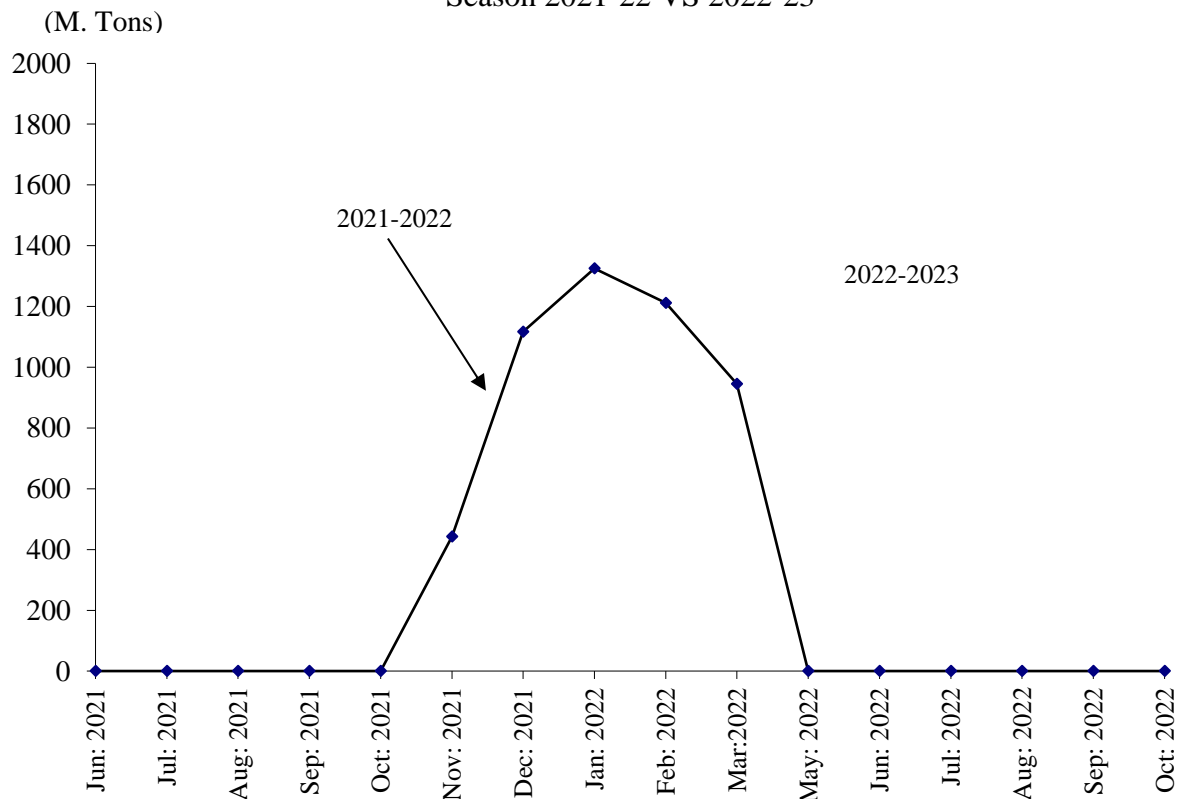


Table 19: MANUFACTURING ACTIVITY OF SUGAR INDUSTRY.

(Metric Tons)

Year	Months	No. Of Units Covered	Sugarcane Crushed	Opening Stock Of Sugar	Production Of Sugar	Sale Of Sugar	Closing Stock Of Sugar	Molasses
2006-07	Nov: 06 – Apr: 07	41	27105733	-	2163263	-	-	1544850
2007-08	Nov: 07- May 08	41	29394739	-	2676345	-	-	1751935
2008-09	Nov:08-Apr:09	45	20388990	-	1926209	-	-	1280422
2009-10	Nov:09 –March10	46	22460655	-	1987285	-	-	887362
2010-11	Nov:10 –April 11	46	27026172	128193	2475907	2013178	590922	709876
2011-12	Oct: 11- Apr: 12	46	32310644	590922	3057611	2633244	1015289	750699
2012-13	Nov:12–May 13	46	35745878	1015289	3739171	4064180	690280	666328
2013-14	Nov:13–Apr: 14	46	30864941	690280	3075144	2013384	1752040	807507
2014-15	Nov:14–Apr: 15	46	31453631	1752040	3036312	2775995	2012357	66682
2015-16	Nov:15–Apr: 16	44	28922605	2012357	2666278	2951038	1727597	571184
2016-17	Nov: 16-Apr: 17	44	44143327	1727597	4314228	2754948	3286877	1522522
2017-18	Nov: 17-Apr: 18	45	53190310	3286877	5111165	6745070	1652972	1352698
2018-19	Dec: 18-Apr: 19	45	30835769	1652972	4868545	4278122	2243395	1361477
2019-20	Nov: 19-Mar:20	44	23839905	1973322	3102104	4054794	1020632	671189
2020-21	Nov: 20-Mar:21	44	50011167	1020632	3877150	3620582	1277200	1166132
2021-22	Nov:21-Apr:22	44	47559505	1277200	5258131	4696627	1838704	2631504
<u>2022-23</u>	(Jul: – Oct:)	<u>44</u>	<u>:</u>	<u>1838704</u>	<u>:</u>	<u>1013534</u>	<u>825170</u>	<u>:</u>
	Jul:	44	-	1838704	-	309554	1529150	-
	Aug:	44	-	1529150	-	207363	1321787	-
	Sep:	44	-	1321787	-	254986	1066801	-
	Oct:	44	-	1066801	-	241631	825170	-

TABLE 20: EMPLOYMENT AND WAGES / SALARIES

Year /Months	No. Of Units Covered	EMPLOYMENT (Nos.)			WAGES / SALARIES (000 Rs.)	
		Total	Production Workers	Office Staff	Total	Production Workers
2007-2008	<u>41</u>	<u>28047</u>	<u>17824</u>	<u>10223</u>	<u>155822</u>	<u>89252</u>
(Crushing Season)		31966	20512	11454	176659	103596
(Non-Crushing Season)		22559	14062	8497	126651	69170
2008-2009	<u>45</u>	<u>21716</u>	<u>13193</u>	<u>8524</u>	<u>164256</u>	<u>95503</u>
(Crushing Season)		<u>27532</u>	<u>17387</u>	<u>10145</u>	<u>193291</u>	<u>119674</u>
(Non-Crushing Season)		20262	12144	32473	156998	89461
2009-10	<u>46</u>	<u>24448</u>	<u>15250</u>	<u>9197</u>	<u>197290</u>	<u>116870</u>
(Crushing Season)		31580	20435	11145	247830	153135
(Non-Crushing Season)		19354	11547	7807	161190	90967
2010-11	<u>46</u>	<u>22967</u>	<u>14468</u>	<u>8499</u>	<u>209749</u>	<u>126526</u>
(Crushing Season)		27879	18340	9539	246395	154557
(Non-Crushing Season)		18055	10595	7459	173102	98495
2011-12	<u>46</u>	<u>23078</u>	<u>13932</u>	<u>9145</u>	<u>230146</u>	<u>132212</u>
(Crushing Season)		26017	10957	8007	204749	111423
(Non-Crushing Season)		18964	16058	9959	248287	147060
(2012-13)	<u>46</u>	<u>25311</u>	<u>16021</u>	<u>9848</u>	<u>276892</u>	<u>171611</u>
(Crushing Season)	46	28541	19094	10404	318296	203325
(Non-Crushing Season)	46	20788	11719	9069	127701	127212
(2013-14)	<u>46</u>	<u>25672</u>	<u>16563</u>	<u>9009</u>	<u>318239</u>	<u>196709</u>
(Crushing Season)	46	29968	19690	10278	366452	229798
(Non-Crushing Season)	46	21300	13907	7393	260446	162496
(2014-15)	<u>46</u>	<u>23845</u>	<u>15042</u>	<u>8804</u>	<u>337354</u>	<u>207609</u>
(Crushing Season)	46	27988	18137	9852	389645	244041
(Non-Crushing Season)	46	19703	11947	7755	285051	171178
(2015-16)	<u>44</u>	<u>22554</u>	<u>14023</u>	<u>8531</u>	<u>341965</u>	<u>205969</u>
(Crushing Season)	44	25752	16141	9611	388494	237002
(Non-Crushing Season)	44	19356	11738	7618	298435	174937
2016-17	<u>45</u>	<u>24469</u>	<u>14900</u>	<u>9569</u>	<u>404061</u>	<u>250817</u>
(Crushing Season)	45	30354	18632	11722	480241	305510
(Non-Crushing Season)	45	18583	11168	7415	327881	156664
2017-18	<u>45</u>	<u>26874</u>	<u>16910</u>	<u>9964</u>	<u>588807</u>	<u>325440</u>
(Crushing Season)	45	31429	20009	11419	706001	393686
(Non-Crushing Season)	45	22318	13810	8507	471613	257195
2018-19	<u>45</u>	<u>28234</u>	<u>18208</u>	<u>10226</u>	<u>720481</u>	<u>406815</u>
(Crushing Season)	45	32495	21556	10939	794668	459287
(Non-Crushing Season)	45	25190	15817	9373	667492	369336
2019-20	<u>45</u>	<u>19599</u>	<u>12795</u>	<u>6834</u>	<u>419356</u>	<u>265765</u>
(Crushing Season)	45	31689	21217	10472	722697	285965
(Non-Crushing Season)	45	22940	15223	9373	7717	507681
2020-21	<u>44</u>	<u>27571</u>	<u>17326</u>	<u>10245</u>	<u>616305</u>	<u>359633</u>
(Crushing Season)	44	33603	21507	12096	692380	424448
(Non-Crushing Season)	44	21538	13145	8393	540231	294819
2021-22	<u>44</u>	<u>28202</u>	<u>17665</u>	<u>10537</u>	<u>680443</u>	<u>439798</u>
(Crushing Season)	44	34807	21899	12908	760582	504374
(Non-Crushing Season)	44	21597	13430	8167	600255	375223
(Jul: – Oct:)	<u>44</u>	<u>18761</u>	<u>11326</u>	<u>7435</u>	<u>600251</u>	<u>375292</u>
Jul:	44	19071	11924	7147	605819	394717
Aug:	44	18225	10540	7685	583200	347820
Sep:	44	18125	10530	7595	580000	347490
Oct:	44	19621	12308	7313	631983	411139

*= Monthly average over the four months/ crushing/Non crushing season.

PERFORMANCE OF CIGARETTES INDUSTRY

Report for the month of October 2022

Coverage

This report covers three (03) Cigarettes factories of the Punjab.

Production

The production of Cigarettes during the month was 1596 Million Nos. Which was 12.0% higher than September 2022.

Sale and Stock

Sale of Cigarettes during the month was 1573 Million Nos. Which was 0.3% lower than September 2022.

Employment

Total employment in these factories during the month was 639, which was 0.6% lower the last month. Out of this total employment, 448 were production workers. Total wages/salaries for the month were amounted to Rs.66.0 Million.

PRODUCTION OF CIGARETTES

July 2021 to October 2022

(Millions Nos.)

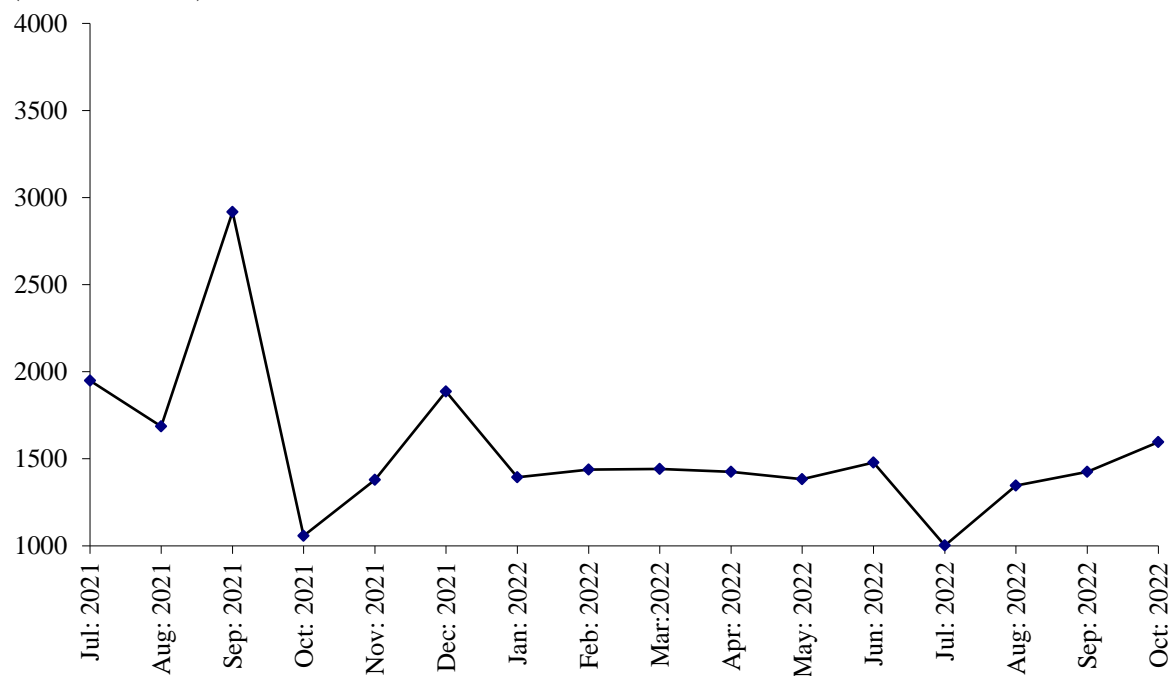


Table No.21 MANUFACTURING ACTIVITY OF CIGARETTES INDUSTRY.

Year (July-June)/ Month	No. Of Reporting Units	PRODUCTION, SALE & STOCK OF CIGARETTES (Million Nos.)			EMPLOYMENT* (Nos.)		WAGES/SALARIES (‘000’Rs.)	
		Production	Sale	Stock at the end	Total	Production Workers	Total	Production Workers
2006-07	3	29901.9	29642.1	1297.5	1398	1272	18278	14591
2007-08	3	34987.2	35762.5	510	1364	1238	22291	16829
2008-09	3	43058.0	42901.0	667	1307	1089	23946	18512
2009-10	3	37296.0	36987.0	976	1269	1136	26379	20638
2010-11	3	37944	37420	1500	1178	1051	28432	25294
2011-12	3	34955	35961	494	998	898	32942	29936
2012-13	3	37845	37996	343	907	811	27023	22214
2013-14	3	33094	24934	8503	904	797	27781	22032
2014-15	3	33966	38328	4141	905	793	32807	24413
2015-16	3	27502	29914	1729	808	707	33019	24855
2016-17	3	28452	274135	3046	603	509	33264	25008
2017-18	3	28324	30503	867	509	425	32139	23057
2018-19	3	35850	27486	9231	552	446	36978	21686
2019-20	3	25634	21861	13234	640	493	45641	20945
2020-21	3	21353	19306	15124	657	494	50439	21564
2021-22	3	19438	19013	15549	658	490	55998	24776
(Jul: - Oct:)	<u>3</u>	<u>7609</u>	<u>6523</u>	<u>16210</u>	<u>657</u>	<u>485</u>	<u>52096</u>	<u>21704</u>
Jul:	3	1948	1481	15591	656	484	49056	21725
Aug:	3	1686	1296	15981	656	484	53974	21576
Sep:	3	2918	2325	16574	658	485	52676	21758
Oct:	3	1057	1421	16210	659	485	52676	21758
Nov:	3	1380	1292	16298	673	520	53886	22158
Dec:	3	1887	1709	16476	673	520	53886	23828
Jan:	3	1394	1401	16469	676	523	53988	28872
Feb:	3	1439	1693	16215	678	524	53988	28872
Mar:	3	1441	1335	16321	651	512	53721	28637
Apr:	3	1426	1836	15911	645	507	64190	25367
May	3	1383	1793	15501	636	472	65089	25367
Jun:	3	1479	1431	15549	633	358	64846	27353
<u>2022-23</u>								
(Jul:- Oct:)	<u>3</u>	<u>5369</u>	<u>6173</u>	<u>14745</u>	<u>638</u>	<u>429</u>	<u>65181</u>	<u>29259</u>
Jul:	3	1002	1551	15000	630	372	63984	25377
Aug:	3	1346	1472	14874	639	444	65178	30192
Sep:	3	1425	1577	14722	643	452	65586	30736
Oct:	3	1596	1573	14745	639	448	65976	30731

* = Monthly Average over the four months.

PERFORMANCE OF CEMENT INDUSTRY

Report for the month of October 2022

Coverage

This report covers twelve (12) factories in the Punjab.

Production of Clinker

The cement factories produced 1524220 Metric Tons of Clinker during October 2022, which was 3.2% higher than the last month. The factories consumed 1781599 Metric Tons of Clinker to produce Cement.

Production of Cement

The cement factories produced 2130127 Metric Tons of Cement during the month, which was 3.8% higher than the last month.

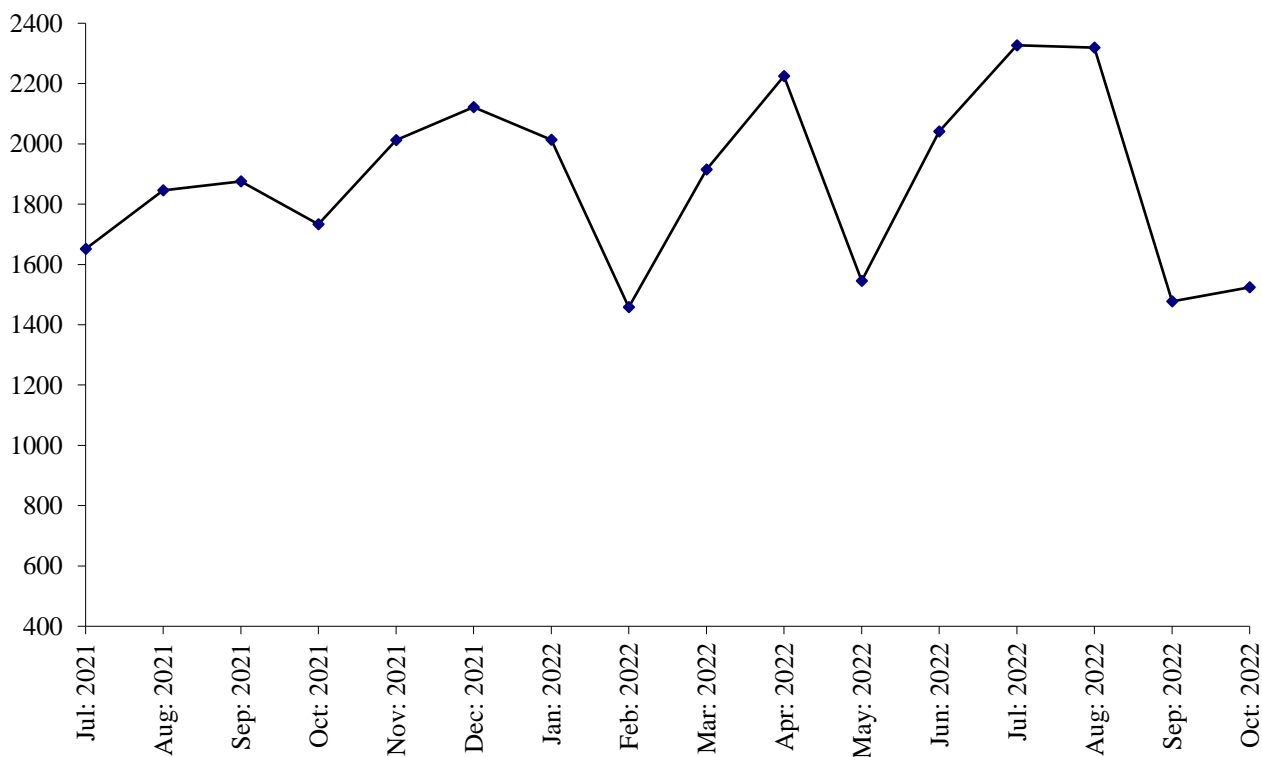
Employment

Total employment in the factories as reported was 7484 which is almost same as the last month. Out of this total employment, 4513 were production workers. Total wages/salaries for the month under report were 676.1 Million Rupees.

PRODUCTION OF CLINKER

July 2021 to October 2022

(000 M. Tons)



PRODUCTION OF CEMENT

July 2021 to October 2022

(000 M. Tons)

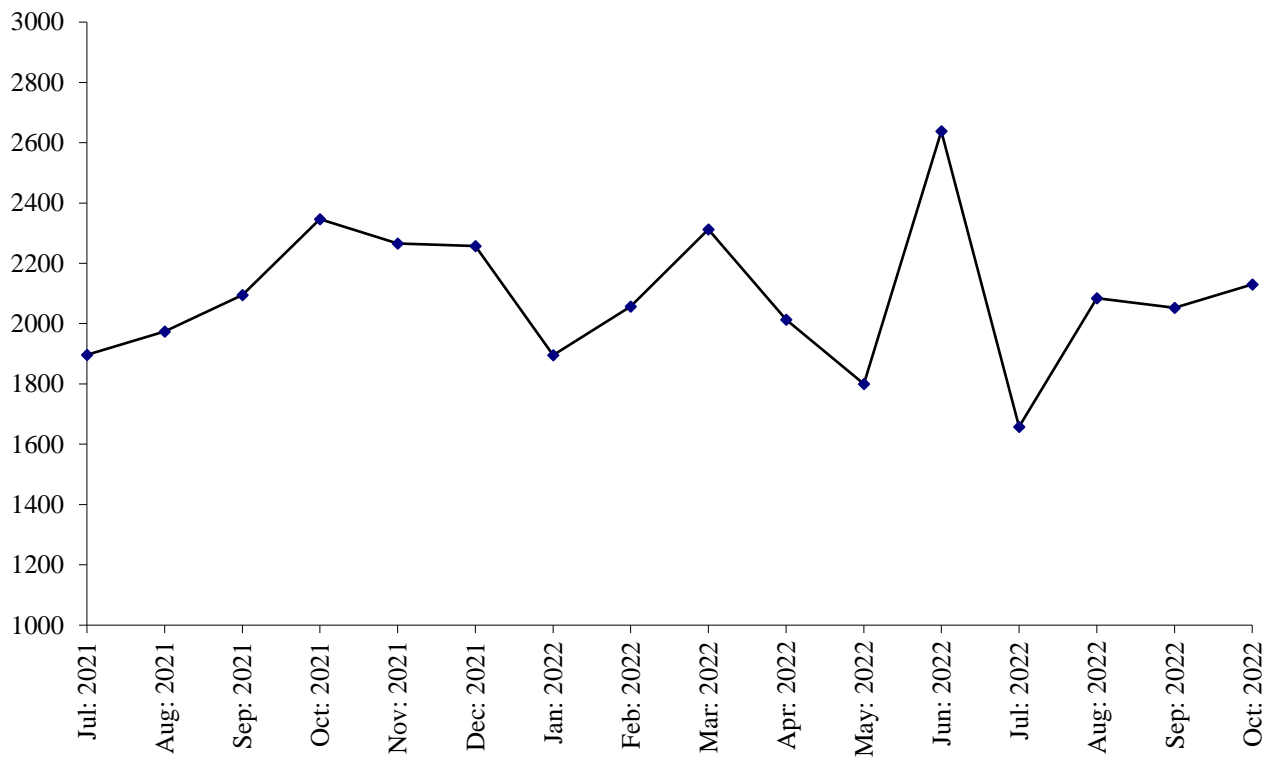


Table No.22 DETAIL OF PRODUCTION, CONSUMPTION AND STOCK OF CLINKER.

(M.Tons)

Year (July-June)/ Month	No. Of reporting Units	Stock at the Beginning	Production	Consumption	Stock at the end
2006-07	12	372278	8573452	8533162	412569
2007-08	13	412569	10403031	10417823	397777
2008-09	13	397777	14275929	13996684	677022
2009-10	13	677022	15438372	15593172	522222
2010-11	13	522222	14340746	13920004	942964
2011-12	13	942964	13937197	13851368	1028793
2012-13	12	1028793	15210981	14730923	1508851
2013-14	12	1508851	15780981	15535319	1754513
2014-15	12	1754513	15926314	15853807	1827020
2015-16	12	1827020	15973852	17140392	660480
2016-17	12	660480	19101688	18498074	1264094
2017-18	12	1264094	20080615	19767345	1577364
2018-19	12	1577364	18892935	18992061	1478238
2019-20	12	1478238	19838457	19197793	2118902
2020-21	12	2118902	21735282	21668097	2186087
2021-22	12	2186087	22442834	22063309	2565612
(Jul: – Oct:)	<u>12</u>	<u>2186087</u>	<u>7107814</u>	<u>6906616</u>	<u>2387285</u>
Jul:	12	2186087	1652107	1531086	2307108
Aug:	12	2307108	1846363	1612070	2541401
Sep:	12	2541401	1876108	1753780	2663729
Oct:	12	2663729	1733236	2009680	2387285
Nov:	12	2387285	2011603	2197532	2201356
Dec:	12	2201356	2121533	2112822	2210067
Jan:	12	2210067	2014331	1727433	2496965
Feb:	12	2496965	1457714	1887601	2067078
Mar:	12	2067078	1915494	2084743	1897829
Apr:	12	1897829	2225288	1703171	2419946
May:	12	2419946	1547777	1522494	2445229
Jun:	12	2445229	2041280	1920897	2565612
<u>2022-23</u>					
(Jul: – Oct:)	<u>12</u>	<u>2251510</u>	<u>6116837</u>	<u>6393315</u>	<u>1975032</u>
Jul:	12	2251510	2088489	1370038	2969961
Aug:	12	2969961	1027513	1464659	2532815
Sep:	12	2532815	1476615	1777019	2232411
Oct:	12	2232411	1524220	1781599	1975032

Table No.23 DETAIL OF PRODUCTION, SALE AND STOCK OF CEMENT

(M.Tons)

Year (July- June)/ Month	No. Of Reporting Units	Stock at the beginning	Production	S O L D			Stock at the end
				Total	Within country	Expor- ted	
2006-07	12	57012	8882277	8793994	8793994	-	145295
2007-08	13	145295	10713689	10767713	10767713	-	91271
2008-09	13	91271	14227580	14068486	14068486	-	250365
2009-10	13	250365	16951531	16973086	16973086	-	228810
2010-11	13	228810	14685518	14528966	14528966	-	385362
2011-12	13	385362	15269328	15299852	15299852	-	354838
2012-13	12	354838	15929819	15922363	15922363	-	362294
2013-14	12	362294	16668915	16472689	16472689	-	558520
2014-15	12	558520	17175158	17358446	17358446	-	375232
2015-16	12	375232	18479957	18588721	18588721	-	266468
2016-17	12	266468	19569160	19445145	19445145	-	390483
2017-18	12	390483	22067871	22188484	22188484	-	269870
2018-19	12	269870	21077461	20903996	20903996	-	443335
2019-20	12	443335	20386575	20021979	20021979	-	807931
2020-21	12	807931	24535481	24360442	24360442	-	982970
2021-22	12	982970	25551134	25220928	25220928	-	1313176
(Jul: – Oct:)	<u>12</u>	<u>982970</u>	<u>8311987</u>	<u>8062154</u>	<u>8062154</u>	<u>-</u>	<u>1232803</u>
Jul:	12	982970	1896820	1759516	1759516	-	1120274
Aug:	12	1120274	1974246	1929710	1929710	-	1164810
Sep:	12	1164810	2094744	2089161	2089161	-	1170393
Oct:	12	1170393	2346177	2283767	2283767	-	1232803
Nov:	12	1232803	2265548	2235177	2235177	-	1263174
Dec:	12	1263174	2256806	2247223	2247223	-	1272757
Jan:	12	1272757	1894814	1839850	1839850	-	1327721
Feb:	12	1327721	2057450	2076809	2076809	-	1308362
Mar:	12	1308362	2312804	2411977	2411977	-	1209189
Apr:	12	1209189	2013261	1985888	1985888	-	1236562
May:	12	1236562	1800109	1721343	1721343	-	1315328
Jun:	12	1315328	2638355	2640507	2640507	-	1313176
<u>2022-23</u>							
(Jul: – Oct:)	<u>12</u>	<u>1313176</u>	<u>7075133</u>	<u>7039227</u>	<u>7039227</u>	<u>-</u>	<u>1349082</u>
Jul:	12	1313176	1288682	1186775	1186775	-	1415083
Aug:	12	1415083	1603861	1710889	1710889	-	1308055
Sep:	12	1308055	2052463	2052262	2052262	-	1308256
Oct:	12	1308256	2130127	2089301	2089301	-	1349082

Table No.24 EMPLOYMENT AND WAGES/SALARIES OF CEMENT INDUSTRY

Year (July-June)/ Month	No. Of Reporting Units	EMPLOYMENT (No)*			WAGES/SALARIES (000 Rs.)	
		Total	Production Workers	Non-Production Workers	Total	Production Workers
2006-07	12	4950	2839	2111	62364	28354
2007-08	13	5429	3200	2229	113212	54248
2008-09	13	5858	3906	1952	137089	755759
2009-10	13	6272	4292	1980	157409	80564
2010-11	13	6713	4631	2082	177979	94502
2011-12	13	6614	4729	1885	195861	115717
2012-13	12	6463	4591	1872	226498	135792
2013-14	12	6593	4648	1945	241852	140576
2014-15	12	6767	4817	1950	301847	178187
2015-16	12	7046	5009	2037	384190	222124
2016-17	12	7627	5178	2448	521509	292515
2017-18	12	8033	5262	2771	729712	399586
2018-19	12	8077	5360	2717	668155	384602
2019-20	12	7988	5400	2588	634682	387052
2020-21	12	7912	5328	2583	661961	405863
2021-22	12	7969	5325	2644	717914	438054
(Jul: – Oct:)	<u>12</u>	<u>8153</u>	<u>5587</u>	<u>2566</u>	<u>735741</u>	<u>463248</u>
Jul:	12	8210	5620	2590	707723	445546
Aug:	12	8170	5593	2577	744994	468152
Sep:	12	8117	5568	2549	748078	466123
Oct:	12	8115	5567	2548	749369	473170
Nov:	12	8101	5561	2540	750353	472517
Dec:	12	8218	5499	2719	763646	471320
Jan:	12	8065	5357	2708	740527	456321
Feb:	12	8059	5358	2701	739443	455027
Mar:	12	7725	5033	2692	675027	395887
Apr:	12	7705	5002	2703	673907	391614
May:	12	7563	4866	2697	663063	381770
Jun:	12	7575	4881	2694	666032	379198
<u>2022-23</u>						
(Jul: – Oct:)	<u>12</u>	<u>7446</u>	<u>4652</u>	<u>2795</u>	<u>671368</u>	<u>373257</u>
Jul:	12	7449	4695	2754	662075	371559
Aug:	12	7426	4699	2727	673867	375353
Sep:	12	7426	4700	2726	673448	375018
Oct:	12	7484	4513	2971	676081	371098

* = Monthly average over the four months.

PERFORMANCE OF FERTILIZER INDUSTRY

Report for the month of October 2022

Coverage

This report covers Seven (07) fertilizer factories in the Punjab Province.

Production

These factories produced 292032 Metric Tons of Urea, 3250 Metric Tons of Super Phosphate, 74824 Metric Tons of Amm. Nitrate and 76121 Metric Tons of Nitro Phosphate. The overall production of Fertilizer during the month was 1.9% higher than the last month.

Sale and Stock

These fertilizer factories reported a sale of 291161 Metric Tons of Urea, 2257 Metric Tons of Super phosphate, 76434 Metric Tons of Amm. Nitrate and 79819 Metric Tons of Nitro Phosphate. The stock of Urea, Super Phosphate, Amm. Nitre and Nitro Phosphate at the end of the month was 47978, 7430, 8740 and 14254 Metric Tons respectively.

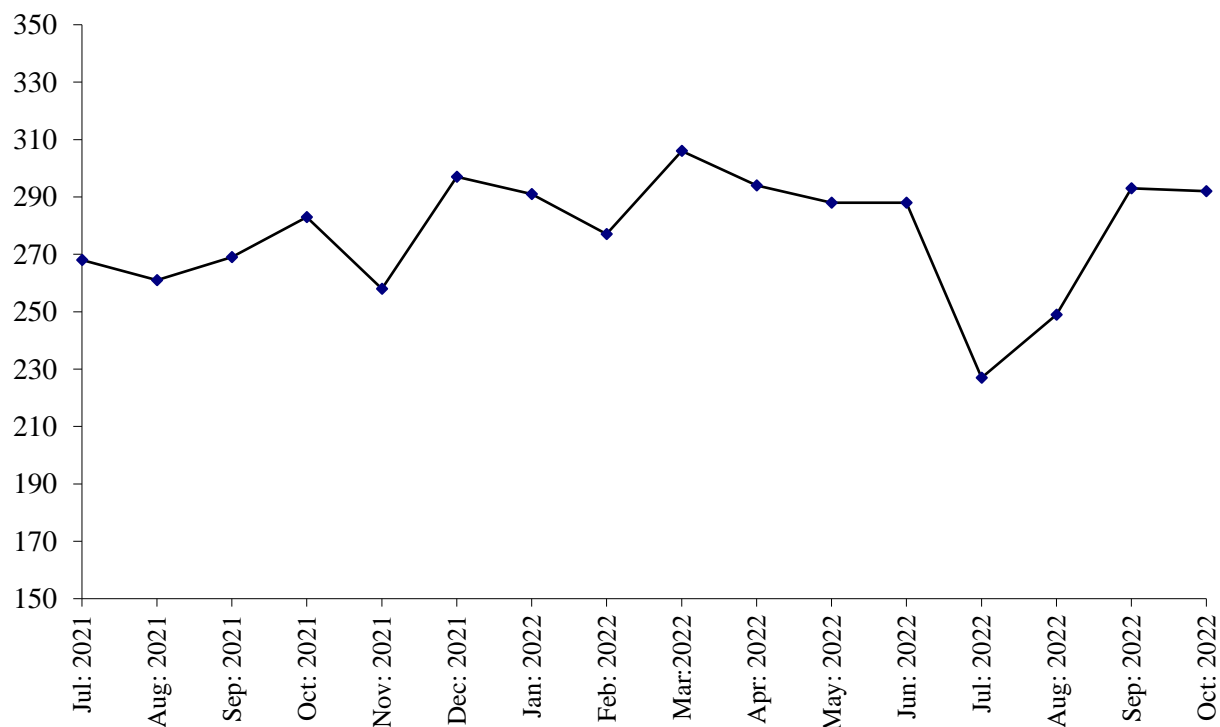
Employment and Wages/Salaries

Total employment during the month was 5545 which is. 0.1% higher than the last month. Out of this total employment 3666 were production workers. Total Wages/Salaries for the month under report were amounted to 940.2 Million Rupees.

PRODUCTION OF UREA

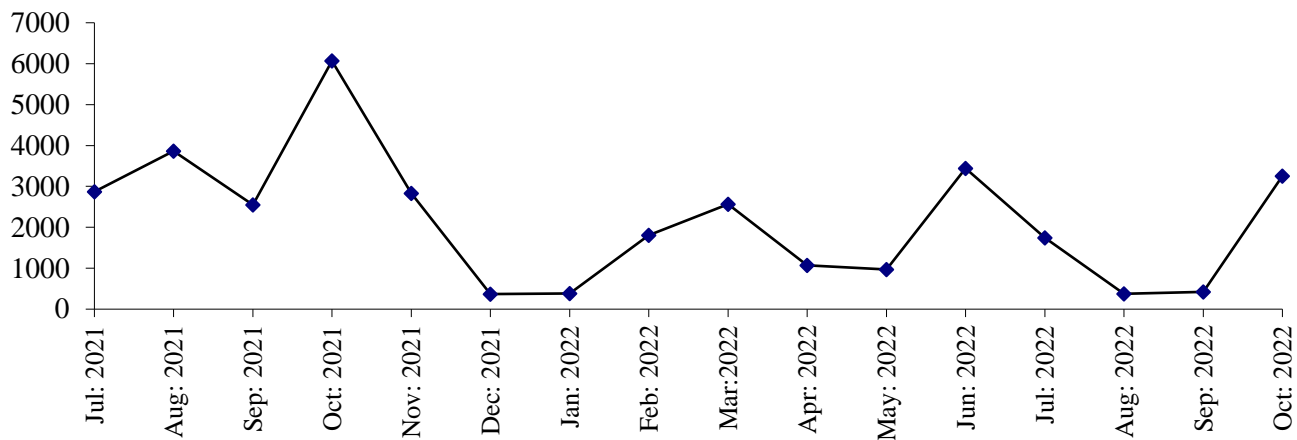
July 2021 to October 2022

(000 M. Tons)



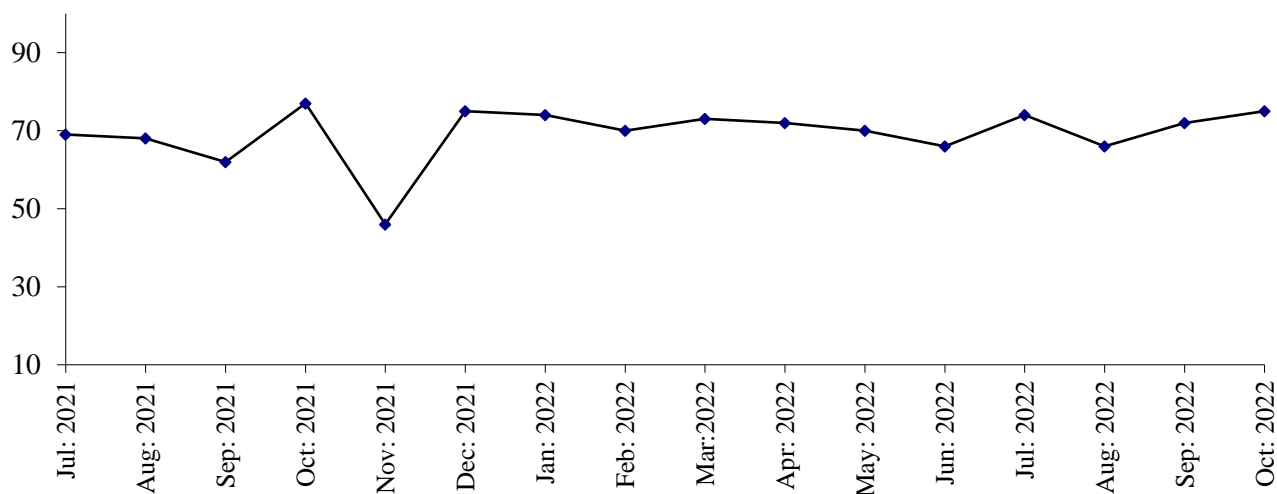
PRODUCTION OF SUPER PHOSPHATE

(000 M. Tons) July 2021 to October 2022



PRODUCTION OF AMM. NITRATE

(000 M. Tons) July 2021 to October 2022



PRODUCTION OF NITRO PHOSPHATE

(000 M. Tons) July 2021 to October 2022

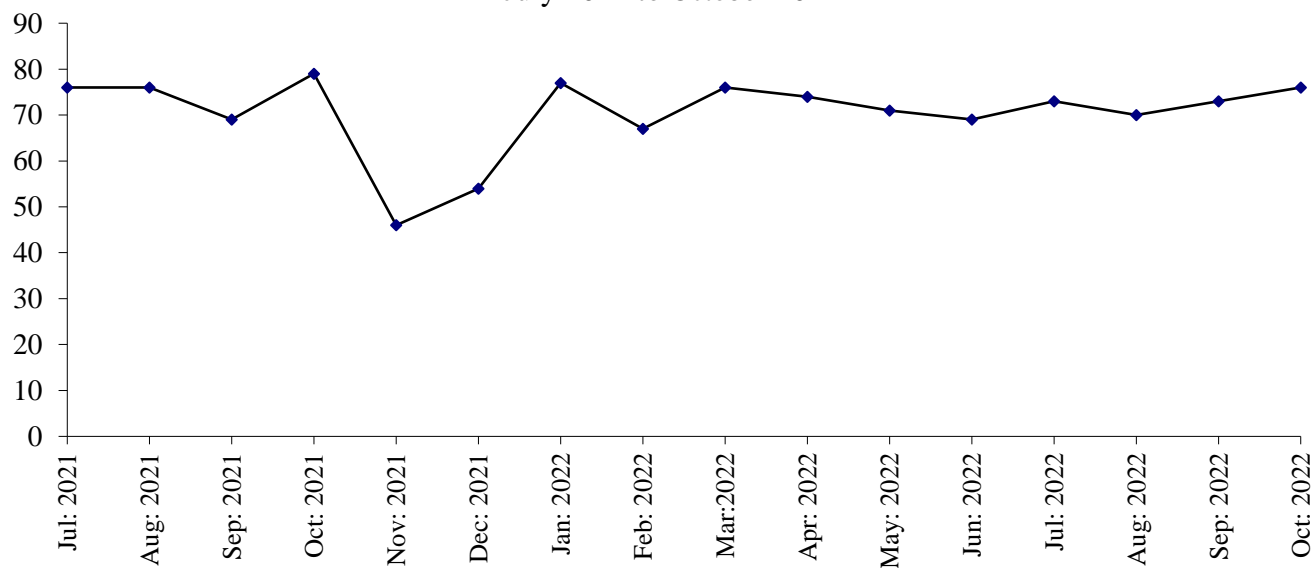


Table No: 25 DETAIL OF PRODUCTION, SALE AND STOCK OF UREA AND AMM. SULPHATE

(M. Tons)

Year (July-June)/ Month	U R E A			AMM. SULPHATE		
	Production	Sale	Stock at The end	Production	Sale	Stock at the end
2006-07	3267943	3024493	321843	-	-	-
2007-08	3274090	3553613	42320	-	-	-
2008-09	3377275	3404025	15570	-	-	-
2009-10	3431545	3374056	73059	-	-	-
2010-11	3016783	3064387	25455	-	-	-
2011-12	2750392	2701061	74786	-	-	-
2012-13	2592718	2639313	28191	-	-	-
2013-14	2582330	2539991	70530	-	-	-
2014-15	2459980	2505550	24960	-	-	-
2015-16	2856143	2392405	488698	-	-	-
2016-17	2808518	2895909	401307	-	-	-
2017-18	2987690	3367935	21062	-	-	-
2018-19	3181203	3133449	68816	-	-	-
2019-20	3201765	3251695	18886	-	-	-
2020-21	3268768	3132828	154826	-	-	-
2021-22	3381465	3514260	22031	-	-	-
(Jul: – Oct:)	<u>1080878</u>	<u>983229</u>	<u>252475</u>	=	=	=
Jul:	267660	302833	119653	-	-	-
Aug:	260817	331466	49004	-	-	-
Sep:	268983	262644	55343	-	-	-
Oct:	283418	86286	252475	-	-	-
Nov:	258361	447787	63049	-	-	-
Dec:	296917	326311	33655	-	-	-
Jan:	290980	307983	16652	-	-	-
Feb:	277309	285466	8495	-	-	-
Mar:	305863	272439	41919	-	-	-
Apr:	294483	252489	83913	-	-	-
May	288282	245035	127160	-	-	-
Jun:	288392	393521	22031	-	-	-
<u>2022-23</u>						
(Jul: – Oct:)	<u>1060941</u>	<u>1034994</u>	<u>47978</u>	=	=	=
Jul:	227313	201455	47889	-	-	-
Aug:	248817	258546	38160	-	-	-
Sep:	292779	283832	47107	-	-	-
Oct:	292032	291161	47978	-	-	-

Table No:26 DETAIL OF PRODUCTION, SALE AND STOCK OF SUPER PHOSPHATE AND AMM. NITRATE
(M. Tons)

Year (July-June)/ Month	SUPER PHOSPHATE			AMM. NITRATE		
	Production	Sale	Stock at The end	Production	Sale	Stock at the end
2006-07	67236	63270	8104	330756	338854	5839
2007-08	83146	78492	12758	343728	349559	8
2008-09	89171	75025	26904	344334	339921	4421
2009-10	46952	56524	17332	345735	330963	19193
2010-11	126909	137940	6301	298029	307696	9526
2011-12	123294	90442	39153	228664	227808	10382
2012- 13	44638	42997	40794	26574	36898	58
2013-14	10081	29493	21382	119631	119539	150
2014-15	18706	25502	14586	113541	65804	47887
2015-16	28023	33404	9205	237844	169639	116092
2016-17	23815	9546	23474	226183	328008	14267
2017-18	1027	23807	694	553091	532829	34529
2018-19	18244	18828	110	456249	487629	3149
2019-20	9034	9122	22	548571	544771	6949
2020-21	31087	28244	2865	756461	762169	1241
2021-22	28780	25353	6292	821680	819768	3153
(Jul: –Oct:)	<u>15349</u>	<u>16734</u>	<u>1480</u>	<u>275891</u>	<u>274264</u>	<u>2868</u>
Jul:	2870	2378	3357	68776	67488	2529
Aug:	3860	1725	5492	67741	69099	1171
Sep:	2552	2406	5638	62255	61957	1469
Oct:	6067	10225	1480	77119	75720	2868
Nov:	2829	4231	78	45922	46639	2151
Dec:	369	421	26	75248	76887	512
Jan:	380	380	26	73840	73945	407
Feb:	1808	1133	701	69549	68599	1357
Mar:	2563	759	2505	73259	74081	535
Apr:	1072	625	2952	72051	72195	391
May	970	970	2952	69899	69764	526
Jun:	3440	100	6292	66021	63394	3153
<u>2022-23</u>						
(Jul: – Oct:)	<u>5789</u>	<u>4651</u>	<u>7430</u>	<u>286557</u>	<u>280970</u>	<u>8740</u>
Jul:	1742	1597	6437	74324	71321	6156
Aug:	378	378	6437	65792	67150	4798
Sep:	419	419	6437	71617	66065	10350
Oct:	3250	2257	7430	74824	76434	8740

Table No: 27 DETAIL OF PRODUCTION, SALE AND STOCK OF NITRO PHOSPHATE.

(M.Tons)

Year (July-June)/ Month	Production	Sale	Stock at the end
2006-07	325826	357595	80
2007-08	329655	267704	62031
2008-09	305678	362938	4771
2009-10	304444	286441	22774
2010-11	265490	287894	370
2011-12	198799	198818	351
2012- 13	22109	22460	0
2013-14	122494	122478	16
2014-15	101171	93467	7720
2015-16	221059	228779	0
2016-17	274512	269570	4942
2017-18	455002	459944	0
2018-19	449667	449667	0
2019-20	624396	615632	8764
2020-21	845493	846511	7746
2021-22	835140	832990	9896
(Jul:- Oct:)	<u>300235</u>	<u>307490</u>	<u>491</u>
Jul:	76427	77902	6271
Aug:	76358	79618	3011
Sep:	68591	71456	146
Oct:	78859	78514	491
Nov:	45976	46117	350
Dec:	53587	53823	114
Jan:	77414	62611	14917
Feb:	67126	66468	15575
Mar:	75747	78156	13166
April:	74267	77291	10112
May:	71404	75520	5996
June:	69384	65484	9896
<u>2022-23</u>			
(Jul: – Oct:)	<u>292078</u>	<u>287720</u>	<u>14254</u>
Jul:	72715	62971	19640
Aug:	70175	73435	16380
Sep:	73067	71495	17952
Oct:	76121	79819	14254

Table No: 28 EMPLOYMENT AND WAGES/SALARIES OF FERTILIZER INDUSTRY*

Year (July-June) / Month	No. Of Working Units	E M P L O Y M E N T (Nos.)*			WAGES/SALARIES (000 Rs.)	
		Total	Production Workers	Office Staff	Total	Production Workers
2006-07	6	4594	3221	1373	148034	93870
2007-08	6	4587	3277	1310	175821	113661
2008-09	5	4710	3316	1394	209439	132521
2009-10	5	4878	3388	1490	273098	166113
2010-11	6	5161	3496	1665	310502	181462
2011-12	6	5407	3671	1736	353344	207054
2012-13	6	5136	3469	1667	363237	210167
2013-14	6	4720	3121	1599	395486	224472
2014-15	6	5090	3015	2075	433858	222449
2015-16	6	5473	3070	2403	489752	235912
2016-17	6	5260	3045	2215	494139	260682
2017-18	7	6020	3616	2404	545307	287497
2018-19	7	6141	3663	2478	573893	295543
2019-20	7	5714	3443	2270	600079	321309
2020-21	7	5700	3590	2110	638195	355515
2021-22	7	5567	3647	1920	743477	417103
(Jul: - Oct:)	<u>7</u>	<u>5522</u>	<u>3587</u>	<u>1935</u>	<u>671085</u>	<u>378129</u>
Jul:	7	5481	3550	1931	725259	396900
Aug:	7	5520	3577	1943	678224	387504
Sep:	7	5529	3593	1936	647039	367985
Oct:	7	5558	3628	1930	633817	360129
Nov:	7	5630	3701	1929	642225	369056
Dec:	7	5603	3683	1920	632104	360027
Jan:	7	5564	3658	1906	649302	374987
Feb:	7	5562	3633	1929	643316	365090
Mar:	7	5639	3723	1916	1003967	522587
Apr:	7	5581	3708	1873	1078631	643434
May	7	5591	3681	1910	794263	429295
Jun:	7	5540	3625	1915	793551	428244
<u>2022-23</u>						
(Jul: – Oct:)	<u>7</u>	<u>5548</u>	<u>3640</u>	<u>1908</u>	<u>917357</u>	<u>506845</u>
Jul:	7	5570	3420	2150	800181	435263
Aug:	7	5534	3736	1798	963632	535843
Sep:	7	5541	3738	1803	965414	538102
Oct:	7	5545	3666	1879	940200	518170

* = Monthly averages over the four months.

PERFORMANCE OF FOOTWEAR INDUSTRY

Report for the month of October 2022

Coverage

This report covers Forty One (41) factories of Footwear Industry in the Punjab Province.

Production

The factories produced 2691 thousand Pairs of Footwear during the current month, which was 7.3% higher than the previous month.

Employment

Total employment in these factories during the current month was 12583, 4.7% higher than the previous month. Out of this total employment, 9469 were production workers.

PRODUCTIN OF FOOTWEAR

July 2021 to October 2022

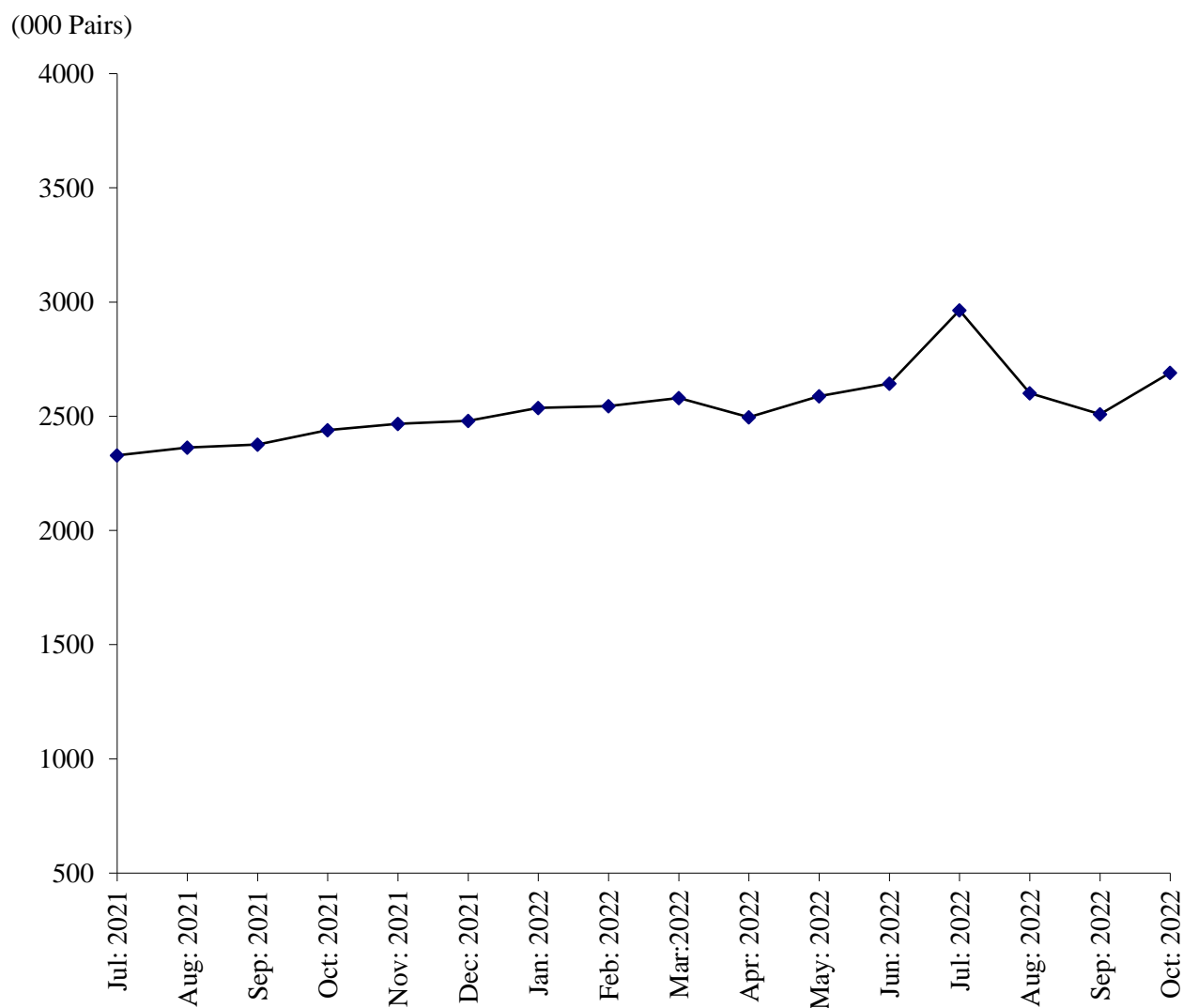


Table No.29 MANUFACTURING ACTIVITY OF FOOTWEAR INDUSTRY

Year (July-June)/ Month	No. Of Reporting Units	Production Of Footwear (000) Pairs)	EMPLOYMENT (NOS.) *	
			Total	Production Workers
2006-07	16	24628	8948	7507
2007-08	16	26865	8592	6928
2008-09	16	30979	8521	7038
2009-10	16	34817	8667	7152
2010-11	40	41008	9699	8116
2011-12	40	41944	9719	8535
2012-13	40	43232	9997	8536
2013-14	40	45030	9967	7937
2014-15	40	55136	9523	7398
2015-16	40	60462	10350	7959
2016-17	41	45476	9778	7401
2017-18	41	37411	9758	7477
2018-19	41	38805	9844	7783
2019-20	41	37860	10346	8451
2020-21	41	25658	10158	7745
2021-22	41	29843	11939	9145
(Jul: – Oct:)	<u>41</u>	<u>9507</u>	<u>11639</u>	<u>8950</u>
Jul:	41	2329	11398	8737
Aug:	41	2363	11624	8935
Sep:	41	2376	11642	8948
Oct:	41	2439	11891	9178
Nov:	41	2467	11907	9192
Dec:	41	2480	11925	9195
Jan:	41	2537	12085	9206
Feb:	41	2545	12092	9209
Mar:	41	2580	12104	9237
Apr:	41	2496	11957	9190
May	41	2588	12164	9219
June	41	2643	12484	9489
<u>2022-23</u>				
(Jul: – Oct:)	<u>41</u>	<u>10765</u>	<u>12325</u>	<u>9393</u>
July	41	2964	12468	9476
Aug:	41	2601	12235	9322
Sep:	41	2509	12014	9306
Oct:	41	2691	12583	9469

* = Monthly Average over the four months.

PERFORMANCE OF LEATHER TANNING INDUSTRY

Report for the month of October 2022

Coverage

The report for the month covers one Hundred and Six (106) Tanneries working in the Punjab Province.

Production

These Tanneries produced 843 thousand Sq. Mtrs. of Upper Leather and 16 M. Tons of Sole Leather during the current month. The Production of Upper Leather during the month was 3.8% higher than the previous month.

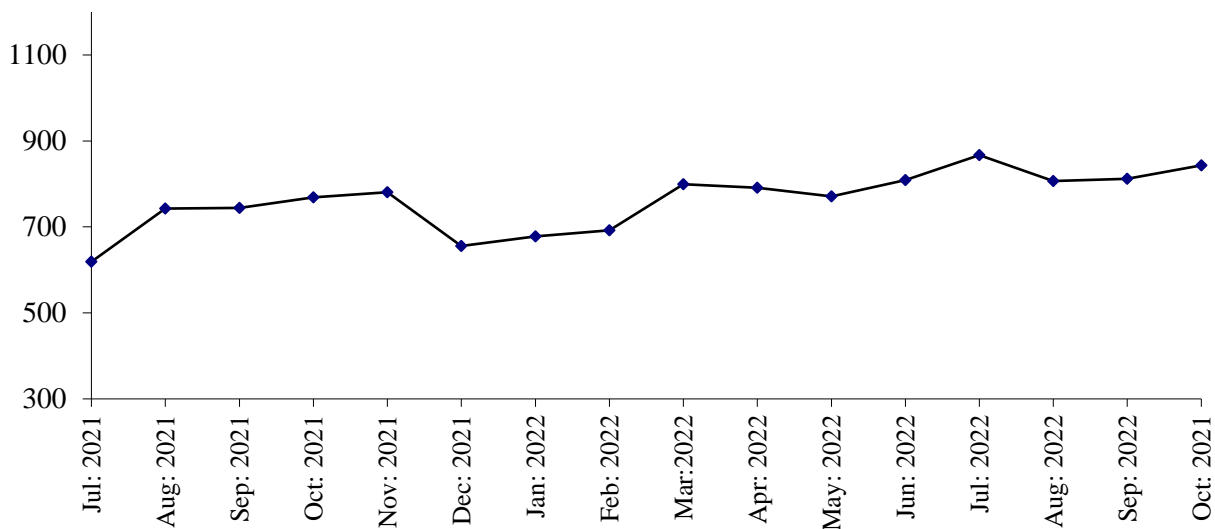
Employment

Total employment in these factories was 2235 persons which was same as the last month. Out of this total employment 1665 persons were production workers.

PRODUCTION OF UPPER LEATHER

July 2021 to October 2022

(000 Sq. Mtrs)



PRODUCTION OF SOLE LEATHER

July 2021 to October 2022

(000 M. Tons)

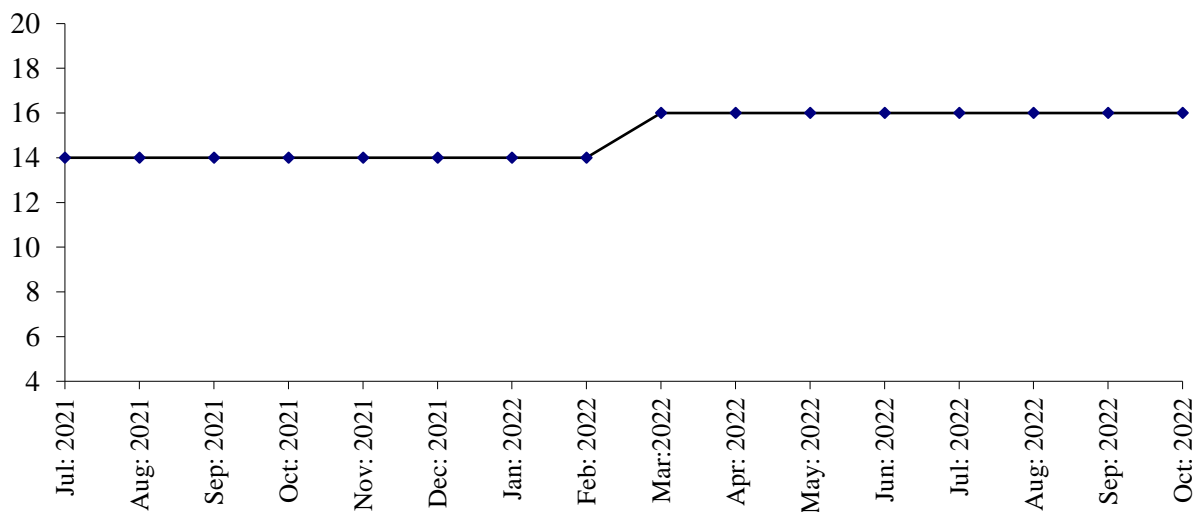


Table No: 30: MANUFACTURING ACTIVITY OF LEATHER TANNING INDUSTRY

Year (July-June) / Month	No. Of Reporting Units	P R O D U C T I O N		EMPLOYMENT (NOS.) *	
		Upper Leather (000 Sq. Mtrs)	Sole Leather (M. Tons)	Total	Production Workers
2006-07	19	5078	126	1296	950
2007-08	19	5833	99	1294	919
2008-09	19	5980	156	1195	910
2009-10	60	10465	215	1711	1325
2010-11	100	12999	381	2234	1813
2011-12	100	11154	417	2133	1709
2012-13	100	10169	356	1824	1318
2013-14	100	10766	287	2404	1703
2014-15	100	10071	241	2539	1821
2015-16	100	9563	198	2550	1935
2016-17	106	10330	156	2956	2174
2017-18	107	11150	168	3071	2248
2018-19	107	11045	168	2938	2135
2019-20	108	9340	168	2787	2006
2020-21	108	7956	168	2467	1755
2021-22	106	8852	176	2261	1591
(Jul: – Oct:)	<u>106</u>	<u>2875</u>	<u>56</u>	<u>2425</u>	<u>1726</u>
Jul:	106	619	14	2489	1778
Aug:	106	743	14	2409	1725
Sept:	106	744	14	2417	1705
Oct:	106	769	14	2383	1694
Nov:	106	781	14	2398	1701
Dec:	106	656	14	2129	1428
Jan:	106	678	14	2138	1441
Feb:	106	692	14	2194	1489
Mar:	106	799	16	2195	1492
Apr:	106	791	16	2155	1564
May	106	771	16	2067	1511
Jun:	106	809	16	2154	1567
<u>2022-23</u>					
(Jul: – Oct:)	<u>106</u>	<u>3329</u>	<u>64</u>	<u>2227</u>	<u>1626</u>
Jul:	106	867	16	2243	1629
Aug:	106	807	16	2215	1605
Sep:	106	812	16	2215	1605
Oct:	106	843	16	2235	1665

* = Monthly average over the four months.

PERFORMANCE OF PAPER & PAPER BOARD INDUSTRY

Report for the month of October 2022

Coverage

This report covers forty seven (47) factories of Paper & Paper Board Industries in the Punjab Province.

Production

Forty eight factories produced 18482 Metric Tons of paper, which comprises of 8872 Metric Tons of writing, 4086 Metric Tons of printing and 5524 Metric Tons of packing and other 37273 Metric Tons of paper board during the month. The production of paper and paper board was 0.5% and 7.1% lower than the last month respectively.

Employment

Total employment during the month was 5105 persons, which was same as the last month. Out of this total employment, 3633 were production workers.

PRODUCTION OF PAPER & PAPER BOARD

July 2021 to October 2022

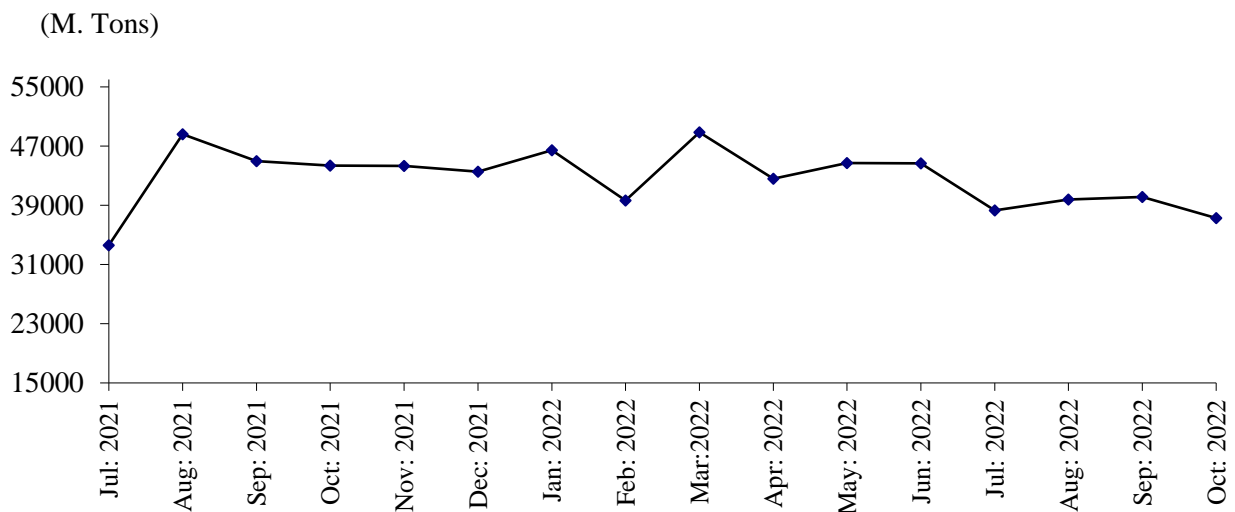


Table No: 31 MANUFACTURING ACTIVITY OF PAPER & PAPER BOARD INDUSTRY.

Year (July-June)/ Month	No. Of Reporting Units	P R O D U C T I O N (M.Tons)			EMPLOYMENT (NOS.) *	
		Paper	Paper Board	Paper & Paper Board	Total	Production Workers
2006-07	34	149972	276010	425982	4975	3983
2007-08	34	180162	223883	404045	5532	4218
2008-09	34	244838	165797	410635	5835	4845
2009-10	41	240775	165269	406044	5398	4178
2010-11	41	220587	194084	414671	5787	3945
2011-12	41	236217	287645	523862	5403	3539
2012-13	43	218980	376138	595118	5702	3774
2013-14	43	205252	457794	663046	6031	4053
2014-15	46	190193	407658	597851	6086	4370
2015-16	50	219040	370427	589467	6169	4629
2016-17	49	226251	398950	625201	6065	4614
2017-18	48	237723	451717	689440	6130	4570
2018-19	47	225544	429716	655260	5567	4052
2019-20	47	220495	441640	662135	5112	3683
2020-21	47	191962	488542	680504	5101	3660
2021-22	47	204434	526353	730787	5026	3600
(Jul: – Oct:)	<u>47</u>	<u>68441</u>	<u>171530</u>	<u>239971</u>	<u>5026</u>	<u>3602</u>
Jul:	47	13887	33616	47503	5026	3605
Aug:	47	17645	48583	66228	5028	3603
Sep:	47	17979	44978	62957	5024	3598
Oct:	47	18930	44353	63283	5026	3602
Nov:	47	18720	44326	63046	5029	3604
Dec:	47	16718	43548	60266	5034	3610
Jan:	47	16829	46459	63288	5036	3616
Feb:	47	16240	39653	55893	5025	3600
Mar:	47	18377	48858	67235	5019	3591
Apr:	47	16900	42580	59480	5021	3585
May	47	15170	44714	59884	5018	3585
Jun:	47	17039	44685	61724	5026	3595
<u>2022-23</u>						
(Jul: – Oct:)	<u>47</u>	<u>72461</u>	<u>155772</u>	<u>228233</u>	<u>5080</u>	<u>3620</u>
Jul:	47	17481	38625	56106	5036	3596
Aug:	47	17928	39762	57690	5090	3625
Sep:	47	18570	40112	58682	5090	3625
Oct:	47	18482	37273	55755	5105	3633

* = Monthly average over the four months.

PERFORMANCE OF LIGHT ENGINEERING INDUSTRY

Report for the month of October 2022

RE-ROLLED STEEL

Coverage

This report covers Forty One (41) factories of Re-Rolled Steel in the Punjab Province.

Production

Forty one factories covered under the survey produced 26077 Metric Tons of steel bars/angles during October 2022, which was 4.2% higher than the last month.

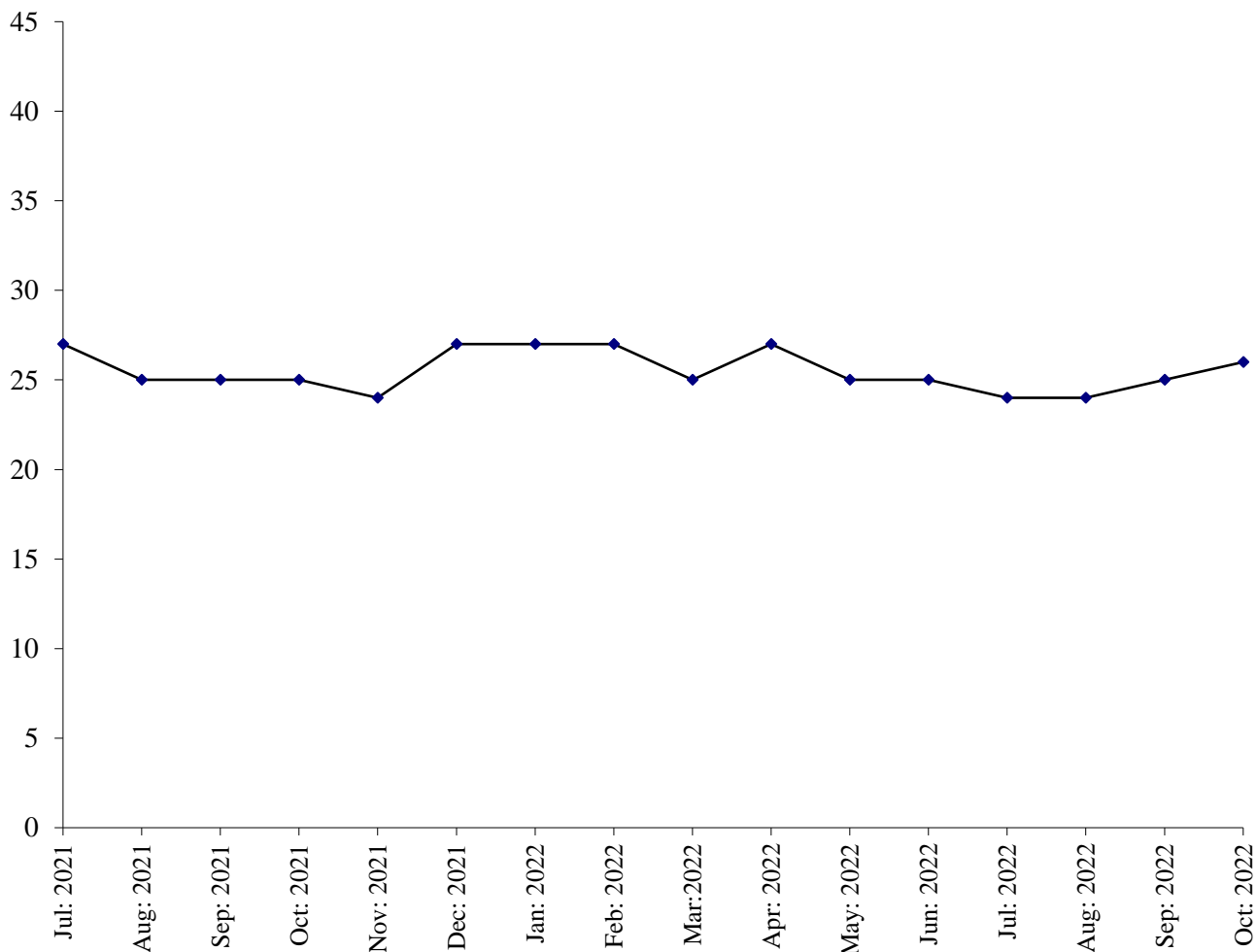
Employment

Total employment in the industry during the month was 1113, which was 1.5% higher than the last month. Out of this total employment, 819 were production workers.

PRODUCTION OF RE-ROLLED STEEL

July 2021 to October 2022

(000 M. Tons)



BICYCLES

Coverage

This report covers three (3) factories of Bicycles in the Punjab.

Production

Three factories being covered in the survey manufactured and assembled 12409 complete bicycles during October 2022, which was 0.9% lower than the last month.

Employment

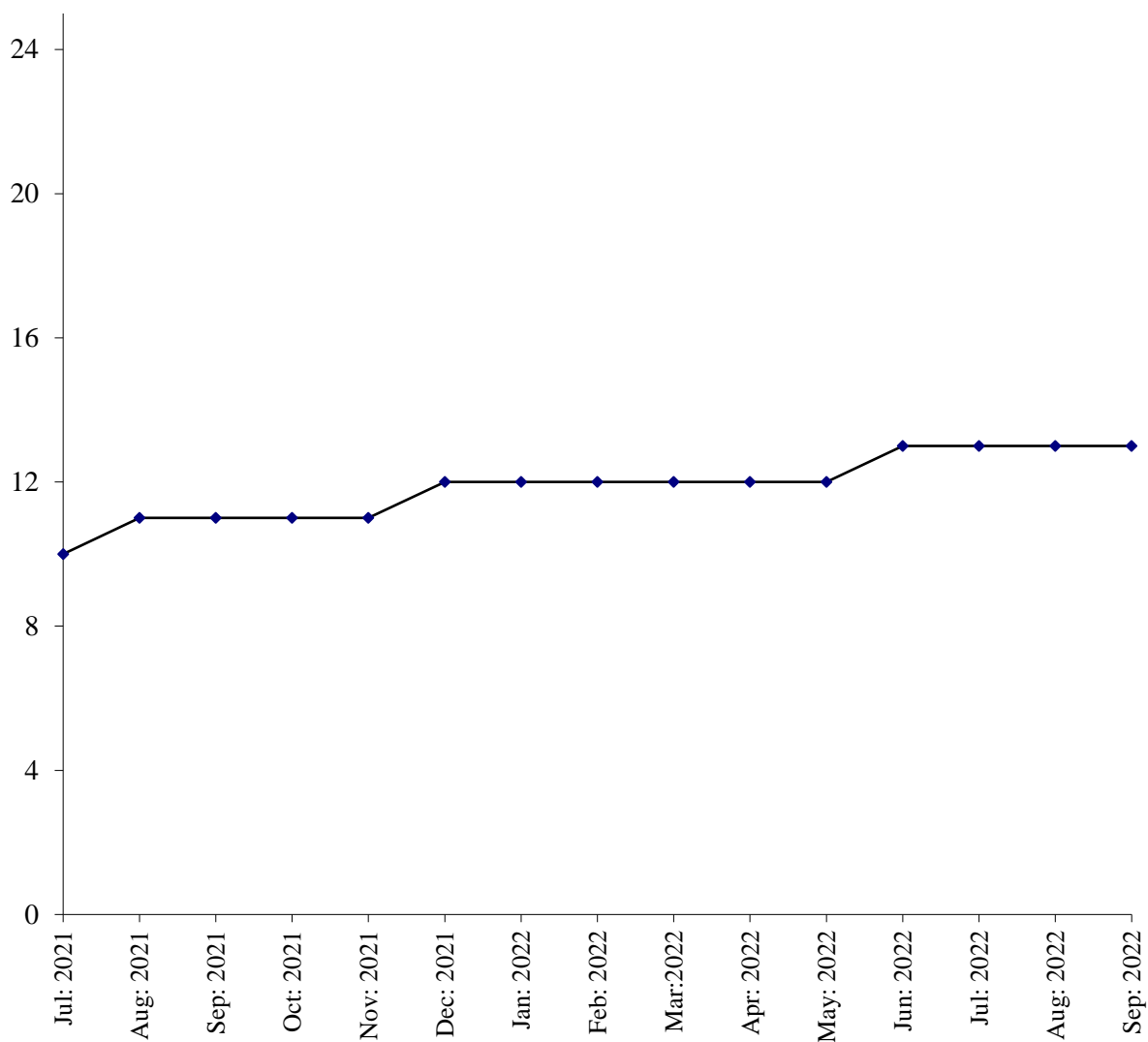
Total employment in these factories during the month was 686, which was same as the last month.

Out of this total employment, 527 were production workers.

PERFORMANCE OF BICYCLES

July 2021 to October 2022

(000 M. Tons)



ELECTRIC FANS

Coverage

This report covers one hundred and twenty six (126) factories of Electric Fans in the Punjab Province.

Production

One hundred and twenty six factories covered under the survey manufactured 160121(ceiling fans, 98709 pedestal fans, 25002 and other fans 36410) during October, 2022, which was 8.5% lower than the last month.

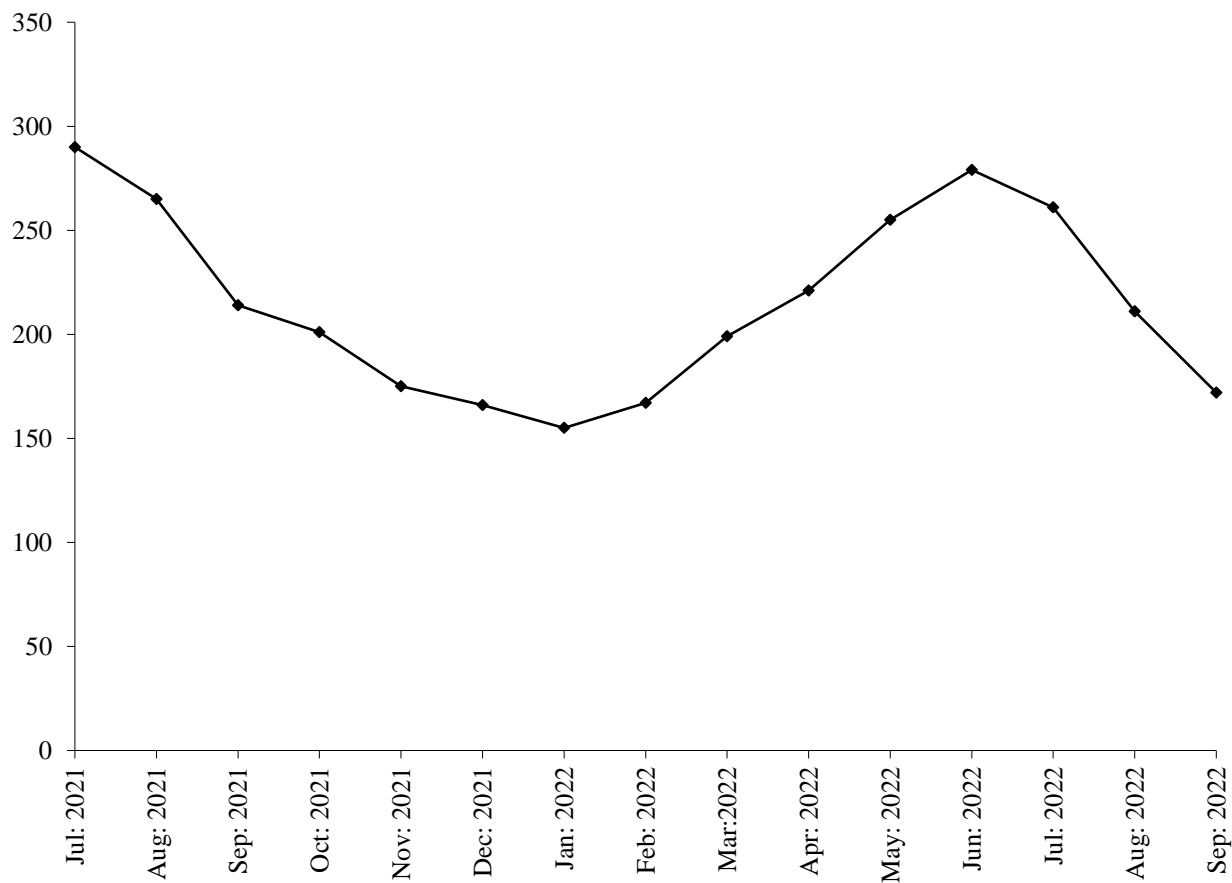
Employment

These factories reported 2130 total employment during the month, which was 0.7% lower than the last month. Out of this total employment, 1862 were production workers.

PERFORMANCE OF ELECTRIC FANS

July 2021 to October 2022

(000 Nos.)



ELECTRIC MOTORS

Coverage

This report covers thirty (30) factories of Electric Motors in the Punjab Province.

Production

Thirty factories covered under the survey manufactured 1617 electric motors during the month, which was 0.2% lower than the last month.

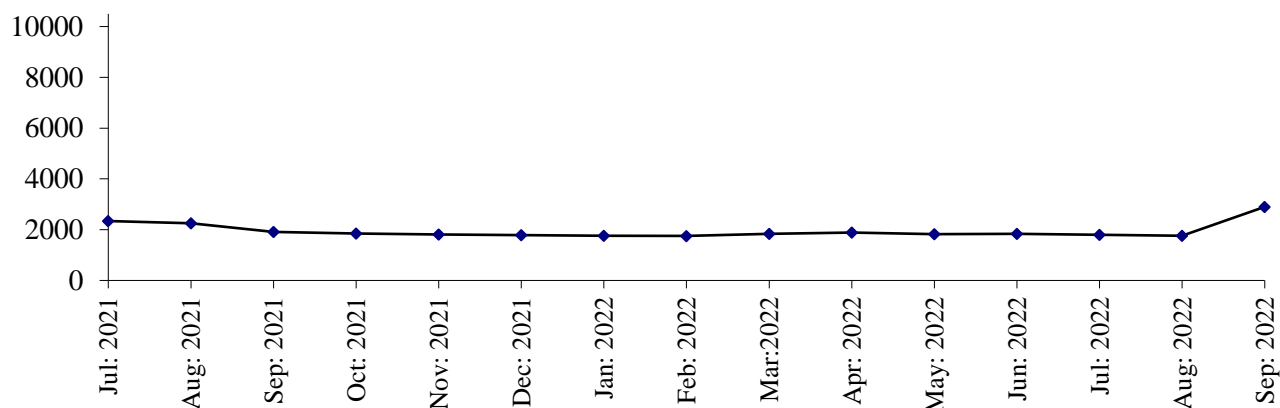
Employment

Total Employment in these factories during the month which was 184, which was 2.1% lower than the last month. Out of this total employment, 150 were production workers.

PRODUCTION OF ELECTRIC MOTORS

(Nos.)

July 2021 to October 2022



DIESEL ENGINES

Coverage

This report covers fifteen (15) factories of Diesel Engines in the Punjab Province.

Production

These fifteen factories covered under the survey and 199 complete diesel engines manufactured during the month, which was 8.3% lower than the last month.

Employment

Total employment in these factories during the month was 24, which is same as it was in previous month. Out of this total employment, 16 were production workers.

PRODUCTION OF DIESEL ENGINES

(Nos.)

July 2021 to October 2022

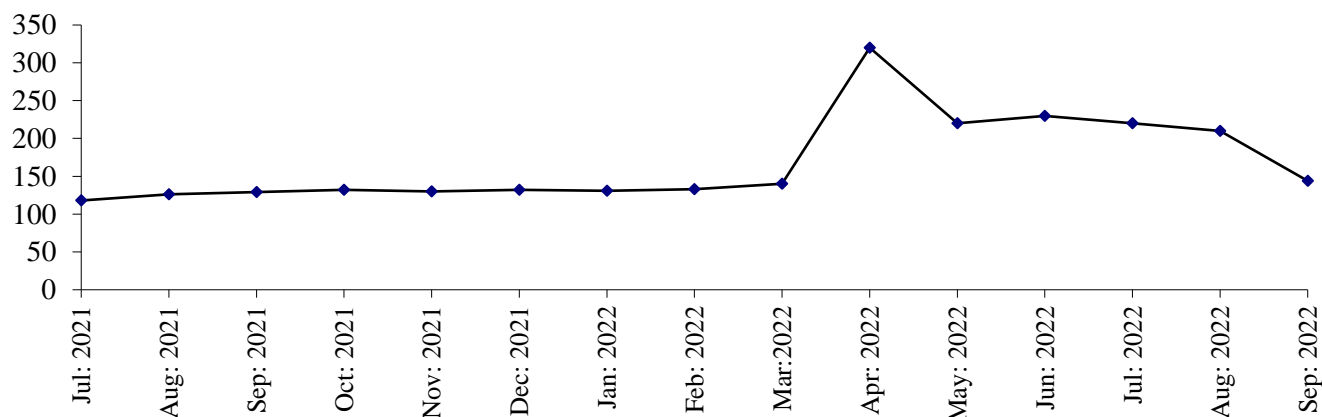


Table No: 32 MANUFACTURINGACTIVITYOFLIGHT ENGINEERING INDUSTRY

Year (July – June) / Month	Re-rolled Steel Bars / Angles (M. Tons)	Bicycles (Nos.)	Electric Fans (Nos.)	Electric Motors (Nos.)	Diesel Engines (N0s.)
2006-07	490894	486349	1469494	7942	14997
2007-08	411062	535519	1654165	5818	18952
2008-09	343506	419897	1697140	6604	16906
2009-10	321369	447207	2128884	7068	20157
2010-11	312433	345272	1940346	7667	10285
2011-12	289874	262096	1858883	5857	2861
2012-13	266669	232979	1909412	5752	2219
2013-14	257569	206459	1870475	9906	2117
2014-15	264406	210931	1870291	9013	2045
2015-16	320769	198966	1970506	7319	495
2016-17	367619	200218	2461369	9206	1554
2017-18	485131	202168	2498919	41793	1120
2018-19	382890	173545	2508085	56819	908
2019-20	289350	141125	2124301	39312	1294
2020-21	312922	79310	2498634	30054	1644
2021-22	308749	141236	2589903	22832	1941
(Jul: – Oct:)	<u>101789</u>	<u>43502</u>	<u>970666</u>	<u>8351</u>	<u>505</u>
Jul:	26742	10400	290116	2344	118
Aug:	24691	10700	265414	2257	126
Sep:	25191	11000	214096	1906	129
Oct:	25165	11402	201040	1844	132
Nov:	24414	11490	175414	1805	130
Dec:	26782	11700	165902	1780	132
Jan:	26680	12019	155467	1763	131
Feb:	26512	12129	167449	1754	133
Mar:	25494	12402	199415	1837	140
Apr:	27009	12304	221120	1886	320
May:	25144	12304	255147	1819	220
Jun:	24925	12990	279413	1837	230
<u>2022-23</u>					
(Jul: – Oct:)	<u>99928</u>	<u>50935</u>	<u>807301</u>	<u>6797</u>	<u>846</u>
Jul:	24423	13007	261144	1802	220
Aug:	24411	13000	211119	1757	210
Sep:	25017	12519	174917	1621	217
Oct:	26077	12409	160121	1617	199

Table No: 33 TOTAL EMPLOYMENT (Nos.) OF LIGHT ENGINEERING INDUSTRY*

Year (July – June)/ Month	Re-rolled Steel Bars / Angles (M.Tons)	Bicycles (Nos.)	Electric Fans (Nos.)	Electric Motors (Nos.)	Diesel Engines (N0s.)
2006-07	1165	2046	1867	112	199
2007-08	1106	2160	1881	72	199
2008-09	1103	2257	1894	69	200
2009-10	1134	2124	2124	63	223
2010-11	1218	2009	2120	64	191
2011-12	1193	1612	2351	64	155
2012-13	1188	1318	2172	58	147
2013-14	1269	1214	2307	64	154
2014-15	1299	1060	2208	63	154
2015-16	1317	907	2090	65	150
2016-17	1372	885	2325	121	146
2017-18	1310	883	2549	130	133
2018-19	1304	759	2673	158	52
2019-20	1013	751	1817	191	22
2020-21	1067	686	2141	197	20
2021-22	1077	686	2229	213	21
(Jul: - Oct:)	<u>1085</u>	<u>686</u>	<u>2188</u>	<u>210</u>	<u>21</u>
Jul:	1111	686	2260	215	21
Aug:	1082	686	2285	215	21
Sep:	1086	686	2141	209	21
Oct:	1061	686	2065	200	21
Nov:	1054	686	2050	198	21
Dec:	1072	686	2030	197	21
Jan:	1070	686	2010	195	21
Feb:	1080	686	2050	194	21
Mar:	1078	686	2140	196	21
Apr:	1082	686	2186	199	24
May	1074	686	2199	197	24
Jun:	1071	686	2229	198	24
<u>2022-23</u>					
(Jul: – Oct:)	<u>1087</u>	<u>686</u>	<u>2168</u>	<u>189</u>	<u>24</u>
Jul:	1070	686	2210	192	24
Aug:	1067	686	2188	190	24
Sep:	1097	686	2144	188	24
Oct:	1113	686	2130	184	24

* = Monthly averages over the four months.

Table No: 34 PRODUCTION WORKERS (Nos.) OF LIGHT ENGINEERING INDUSTRY *

Year (July – June)/ Month	Re-rolled Steel Bars / Angles (M.Tons)	Bicycles (Nos.)	Electric Fans (Nos.)	Electric Motors (Nos.)	Diesel Engines (N0s.)
2006-07	821	1814	1483	89	146
2007-08	780	1900	1545	62	157
2008-09	757	1905	1542	60	160
2009-10	782	1892	1748	57	154
2010-11	870	1843	1709	57	126
2011-12	857	1540	1904	57	99
2012-13	843	1289	1761	50	95
2013-14	905	1161	1850	55	99
2014-15	920	992	1745	54	100
2015-16	934	836	1658	56	97
2016-17	976	820	1865	113	93
2017-18	926	804	1994	119	86
2018-19	916	696	2066	122	34
2019-20	706	679	1425	147	15
2020-21	780	527	1735	151	14
2021-22	786	527	1815	157	16
(Jul: – Oct:)	<u>792</u>	<u>527</u>	<u>1825</u>	<u>164</u>	<u>15</u>
Jul:	810	527	1850	168	15
Aug:	785	527	1840	167	15
Sep:	788	527	1830	165	15
Oct:	783	527	1780	155	15
Nov:	780	527	1765	153	15
Dec:	785	527	1750	152	15
Jan:	785	527	1730	150	15
Feb:	788	527	1760	150	15
Mar:	788	527	1810	150	15
Apr:	782	527	1877	157	16
May	777	527	1888	156	16
Jun:	775	527	1907	157	16
<u>2022-23</u>					
(Jul: – Oct:)	<u>778</u>	<u>527</u>	<u>1880</u>	<u>152</u>	<u>21</u>
Jul:	773	527	1899	154	21
Aug:	770	527	1886	152	21
Sep:	784	527	1871	150	21
Oct:	819	527	1862	150	21

* = Monthly averages over the four months.

PERFORMANCE OF PHARMACEUTICAL INDUSTRY

Report for the month of October 2022

Coverage

This report covers thirty six (36) Pharmaceutical Industries in the Punjab Province.

Production

Overall production of these 36 pharmaceutical factories during the month was 10.9% and 37.8% higher than October 2022 and October 2021 respectively.

These factories produced 281325 thousand Nos. of Tablets, 1660 thousand Ltrs., of Liquids/Syrups, 45670 thousand Nos. of Capsules, 16702 thousand Nos. of Injections, 60010 kgs. of Ointments and 5 thousand Ltrs. of Galanicals (Tincture/Spirits). The production of Tablets, Liquids and Injection was 1.7%, 20.2% higher 3.1% whereas the production of Capsules, Ointments 0.4%, 1.0% lower and Galanicals same as the last month.

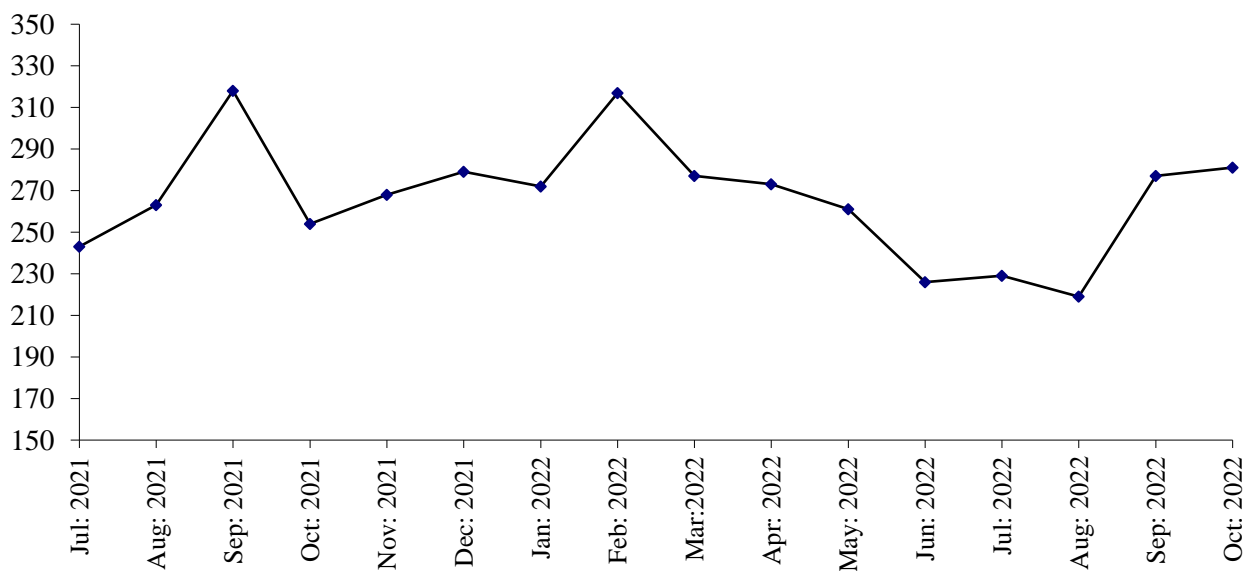
Employment

Total employment in these factories during the month was 8072 which is 0.1% higher than the last month. Out of this total employment 3327 were production workers. Total wages/salaries during the month were 272.2 million rupees.

PRODUCTION OF TABLETS

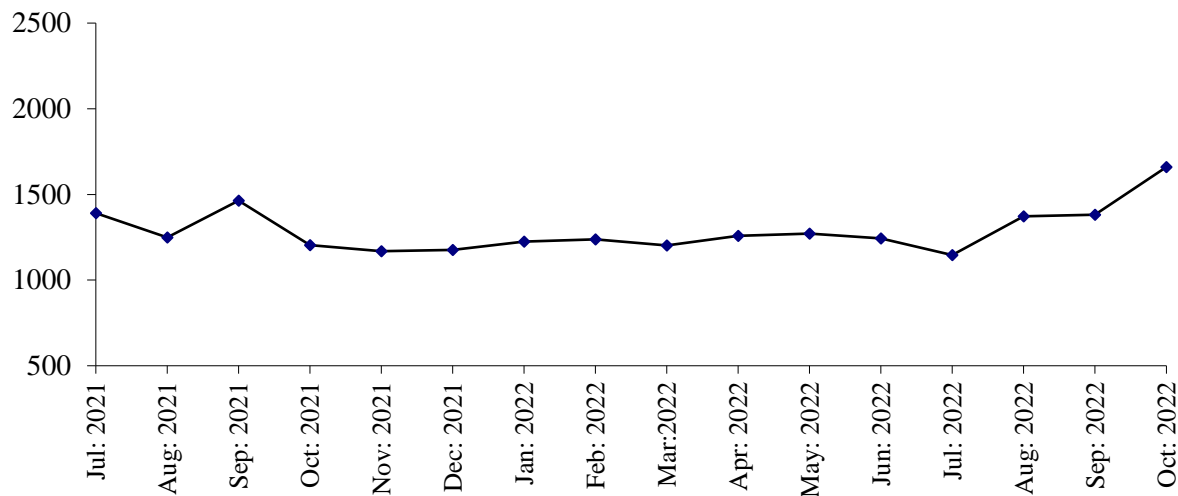
July 2021 to October 2022

(000 Nos.)



PRODUCTION OF LIQUIDS

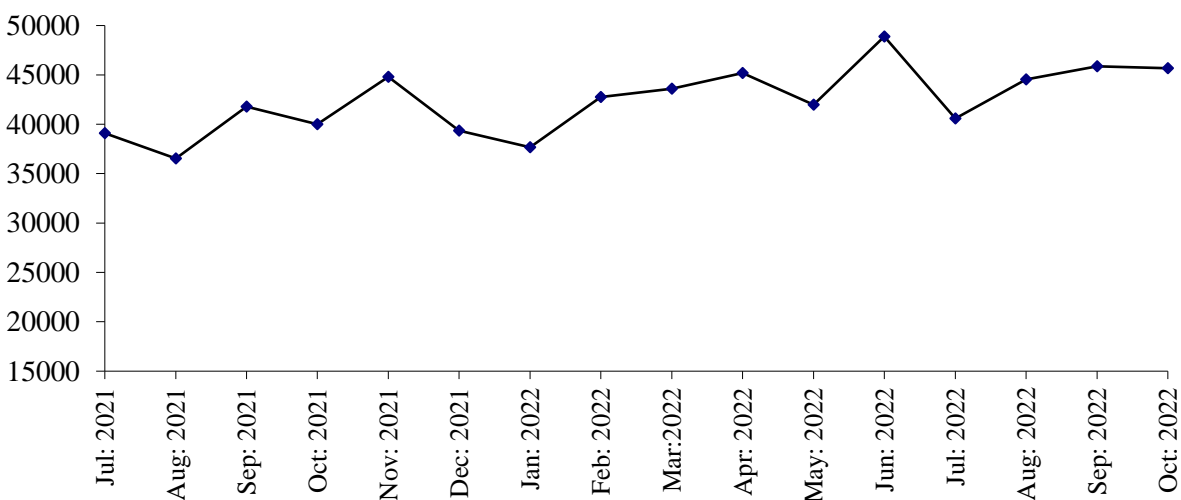
July 2021 to October 2022



PRODUCTION OF CAPSULES

July 2021 to October 2022

(000 Nos.)



PRODUCTION OF INJECTIONS

July 2021 to October 2022

(000 Nos.)

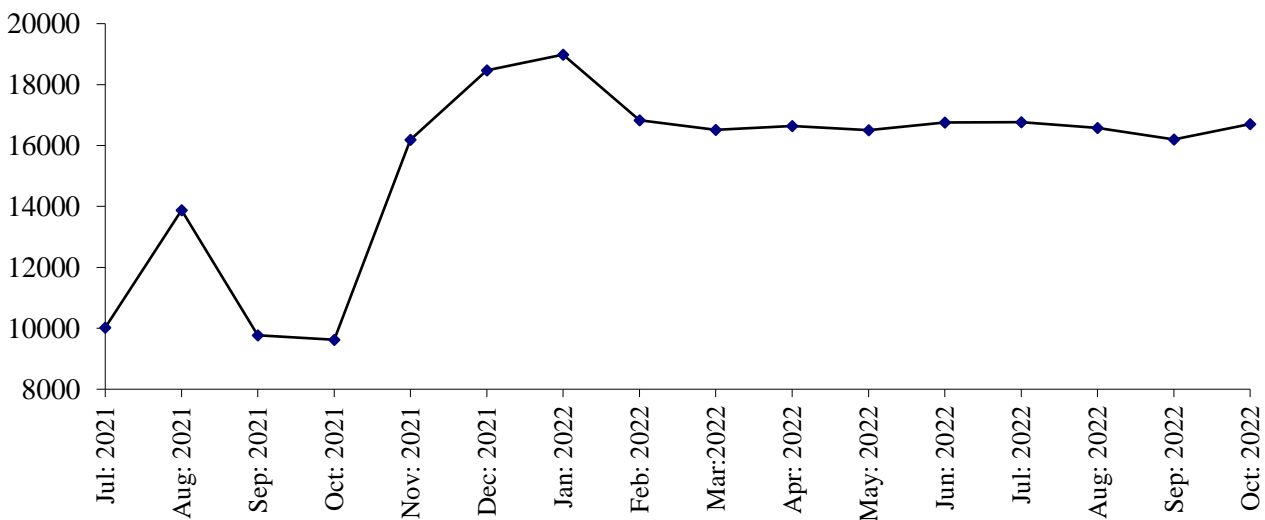


Table 35:MANUFACTURING ACTIVITY OF PHARMACEUTICAL INDUSTRY

Year (July – June) / Month	No. Of Reporting Factories	P R O D U C T I O N					
		Tablets (000 Nos.)	Liquids/ Syrups (000Ltrs.)	Capsules (000 Nos.)	Injections (000 Nos.)	Ointments (Kgs.)	Galanicals Tinctures/ Spirits (000 Ltrs.)
2006-07	33	2722382	9277	131360	99050	69678	189
2007-08	38	2459558	23771	148007	110837	98499	87
2008-09	40	2286638	21267	121093	89615	105595	73
2009-10	40	2373104	23222	134594	99608	189148	62
2010-11	41	2486495	25211	165294	109708	187430	50
2011-12	41	2487861	25546	224249	132544	209841	41
2012-13	40	2873661	35457	339450	119598	196597	34
2013-14	36	2639613	16264	261919	137051	238299	185
2014-15	36	2593592	18838	310520	140827	229778	75
2015-16	36	2823449	21636	339151	133352	242367	46
2016-17	36	2530717	24085	295120	194717	732361	343
2017-18	35	2893883	15602	371962	149607	570468	121
2018-19	36	2826410	14207	420278	144788	567249	39
2019-20	36	2847315	14011	447276	119438	640721	74
2020-21	36	3096704	17504	481498	110866	595075	69
2021-22	36	3249998	15091	501673	180141	518897	54
(Jul: – Oct:)	36	1077817	5308	157406	43291	204800	18
Jul:	36	242868	1391	39093	10024	48632	3
Aug:	36	263232	1249	36537	13877	47480	5
Sep:	36	318031	1463	41783	9766	53293	6
Oct:	36	253686	1205	39993	9624	55395	4
Nov:	36	268300	1168	44809	16186	35665	8
Dec:	36	278537	1177	39348	18468	36490	7
Jan:	36	271875	1225	37686	18983	41480	3
Feb:	36	316549	1237	42758	16830	32575	2
Mar:	36	276784	1203	43600	16515	28100	3
Apr:	36	273023	1258	45194	16638	38510	4
May	36	261458	1271	41986	16503	47835	3
Jun:	36	225655	1244	48886	16760	53442	6
2022-23							
(Jul: – Oct:)	36	1005324	5559	176679	66243	234500	15
Jul:	36	228997	1146	40576	16771	53945	2
Aug:	36	218500	1372	44558	16573	59955	3
Sep:	36	276502	1381	45875	16197	60590	5
Oct:	36	281325	1660	45670	16702	60010	5

Table 36: EMPLOYMENT AND WAGES / SALARIES OF PHARMACEUTICAL INDUSTRY

Year (July – June) / Month	No. Of Reporting Factories	E M P L O Y M E N T (Nos.)			WAGES /SALARIES (000 Rs.)	
		Total	Production Workers	Office Staff	Total	Production Workers
2006-07	33	5148	2596	2552	37178	14090
2007-08	38	5591	2914	2677	60574	27592
2008-09	40	5737	3115	2622	75446	35208
2009-10	40	5967	3294	2673	84295	41482
2010-11	41	7468	3475	3993	109964	38722
2011-12	41	7802	3518	4284	122250	38078
2012-13	40	7619	3397	4222	128323	37873
2013-14	36	7255	3043	4212	141281	37844
2014-15	36	7271	3136	4135	149144	37763
2015-16	36	6887	2887	4000	142875	38347
2016-17	36	7069	3338	3731	166039	42770
2017-18	35	7190	3095	4095	180431	46461
2018-19	36	7287	3080	4207	186677	48238
2019-20	36	7926	3244	4682	215121	53959
2020-21	36	7726	3388	4338	241910	59134
2021-22	36	8092	3318	4774	263957	61029
(Jul: – Oct:)	<u>36</u>	<u>8112</u>	<u>3298</u>	<u>4814</u>	<u>259296</u>	<u>57781</u>
Jul:	36	8252	3306	4946	247515	58344
Aug:	36	8013	3190	4823	257671	57722
Sep:	36	8073	3341	4732	261127	52000
Oct:	36	8108	3356	4752	270869	63056
Nov:	36	8054	3357	4697	280316	62227
Dec:	36	8033	3326	4707	261493	61262
Jan:	36	8055	3323	4732	260153	60755
Feb:	36	8063	3324	4739	260283	60348
Mar:	36	8097	3313	4784	265353	60829
Apr:	36	8114	3321	4793	268839	67358
May	36	8135	3344	4791	269121	67740
Jun:	36	8101	3318	4783	264743	60704
<u>2022-23</u>						
(Jul: – Oct:)	<u>36</u>	<u>8064</u>	<u>3321</u>	<u>4743</u>	<u>270519</u>	<u>61786</u>
Jul:	36	8080	3313	4767	268248	61642
Aug:	36	8043	3319	4724	270475	61754
Sep:	36	8060	3324	4736	271141	61847
Oct:	36	8072	3327	4745	272211	61902

* = Monthly average over the four months.

**LIST OF IMPORTANT TELEPHONES
BUREAU OF STATISTICS, PUNJAB AND ITS FIELD OFFICES**

NAME OF OFFICERS	DESIGNATION	OFFICE TELEPHONE
Sajid Rasul	Director General	042-99232901
Saira Abid	Deputy Director (CIS)	042-99232907
Sana Gull	Assistant Director (CIS)	-do-
Sana Ashraf	Statistical Officer (CIS)	-do-
Muhammad Kashif	Statistical Officer (CIS)	-do-
Rizwan Bashir	Statistical Officer (CIS)	-do-
Zia Ahmad Babar	Statistical Officer (CIS)	-do-
DESIGNATION	BUREAU'S FIELD OFFICES/ADDRESS	
Deputy Director	Tosha Khana Near Cholistan Development Authority, Bahawalpur	062-9250193
Deputy Director	House No. 70-A, Khyaban-e-Sarwar, Dera Ghazi Khan	064-9330108
Deputy Director	2nd Floor Azam Plaza, Near Passport Office, Bukhari Road, Gujranwala	055-9200419
Deputy Director	P-45, Main Road, Al Faiz Colony, Satiana Road Faisalabad	041-9330531
Deputy Director	Near Circuit House, Multan	061-9200930
Deputy Director	Abad Complex Murree Road, Rawalpindi	051-9292035
Deputy Director	52 Umar Park, Sargodha	048-3765387
Deputy Director	34-H Shadman Town, Sahiwal	0404-4507560
Assistant Director	House No. 24, Z-Block, Model Town, Bahawalnagar	063-9330002
Assistant Director	Mohallah Mandi Town, House No.198 Block No. 12 Near Pracha Filling Station, Jhang Road, Bhakkar	0453-9200338
Assistant Director	Street No.4 2nd Floor Mohallah Shumali Chah Loharn Behkari Road, Chakwal	0543-554086
Assistant Director	House No.720-A Gulberg Colony, Kasur	049-2723615
Assistant Director	House No. 190, Employees Colony, Layyah	0606-920273
Assistant Director	Gallah Huntar Pura, Opposite Larri Adda, Christian Town, Sialkot	052-4291219
Assistant Director	Opposite Govt. Vocational College, Nabi Pura, Hiran Minar Road, Sheikhupura	056-3791770

**LIST OF IMPORTANT TELEPHONES
BUREAU OF STATISTICS, PUNJAB AND ITS FIELD OFFICES**

NAME OF OFFICERS	DESIGNATION	OFFICE TELEPHONE
Sajid Rasul	Director General	042-99232901
Saira Abid	Deputy Director (CIS)	042-99232907
Sana Gull	Assistant Director (CIS)	-do-
Sana Ashraf	Statistical Officer (CIS)	-do-
Rizwan Bashir	Statistical Officer (CIS)	-do-
Muhammad Kashif	Statistical Officer (CIS)	-do-
Mehboob Baig	Statistical Officer (CIS)	-do-
DESIGNATION	BUREAU'S FIELD OFFICES/ADDRESS	
Deputy Director	Tosha Khana Near Cholistan Development Authority, Bahawalpur	062-9250193
Deputy Director	House No. 70-A, Khyaban-e-Sarwar, Dera Ghazi Khan	064-9330108
Deputy Director	2nd Floor Azam Plaza, Near Passport Office, Bukhari Road, Gujranwala	055-9200419
Deputy Director	P-45, Main Road, Al Faiz Colony, Satiana Road Faisalabad	041-9330531
Deputy Director	Near Circuit House, Multan	061-9200930
Deputy Director	Abad Complex Murree Road, Rawalpindi	051-9292035
Deputy Director	52 Umar Park, Sargodha	048-3765387
Deputy Director	34-H Shadman Town, Sahiwal	0404-4507560
Assistant Director	House No. 24, Z-Block, Model Town, Bahawalnagar	063-9330002
Assistant Director	Mohallah Mandi Town, House No.198 Block No. 12 Near Pracha Filling Station, Jhang Road, Bhakkar	0453-9200338
Assistant Director	Street No.4, 2nd Floor Mohallah Shumali Chah Loharn Behkari Road, Chakwal	0543-554086
Assistant Director	House No.720-A Gulberg Colony, Kasur	049-2723615
Assistant Director	House No. 190, Employees Colony, Layyah	0606-920273
Assistant Director	Gallah Huntar Pura, Opposite Larri Adda, Christian Town, Sialkot	052-4291219
Assistant Director	Opposite Govt. Vocational College, Nabi Pura, Hiran Minar Road, Sheikhupura	056-3791770